

# QUALITY HAS A NAME – DURAN®

As one of the leading manufacturers of borosilicate glass 3.3, the DURAN GROUP works constantly to optimise its existing products and develop new products. The combination of long years of experience with the flexibility of a medium-sized company makes the DURAN GROUP an ideal partner.

Our umbrella brand



## WHAT MAKES DURAN® SPECIAL

Optimum physical and chemical characteristics make DURAN® glass the material of choice for laboratory applications.

- High raw material purity guarantees uniform glass characteristics
- Decades of experience in the manufacture of laboratory glassware guarantee constant high quality
- Uniform wall thickness distribution throughout the product – therefore better mechanical stability and greater thermal shock resistance – prevents material stresses, which may cause the glass to crack when subject to heating or cooling
- Advantages: improved safety for employees, longer laboratory glass service life, protection of valuable substances



## THE BATCH CERTIFICATE

All DURAN® laboratory glass bottles, beakers, Erlenmeyer flasks and reagent bottles are provided with a “retrace code”.

- Eight-figure number on the articles
- Permits, together with the DURAN Group article number, the calling up of a batch and quality certificate via the DURAN GROUP home page – quickly and conveniently
- Traceability right back to the time of manufacture and the corresponding batch
- Gap-free documentation within your own quality management system



DURAN Group GmbH  
55122 Mainz  
Germany  
info.duran@duran-group.com

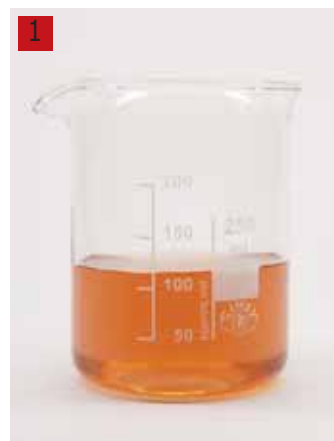
[www.duran-group.com](http://www.duran-group.com)

The logo for the Duran Group, featuring a stylized blue icon of a glass bottle or flask to the left of the text 'DURAN GROUP' in a bold, white, sans-serif font. Below the main text, the tagline 'magic of precision' is written in a smaller, lighter blue font.

### 1 Beakers, Borosilicate 3.3 glass, low form

Borosilicate grade 3.3 glass. DIN 12 331. ISO 3819.

Capacity ml	Ext. diam. mm	Height mm	PK	Cat. No.
5	22	30	10	9.013 905
10	26	35	10	9.013 906
25	34	50	10	9.013 900
50	42	60	10	9.013 901
100	50	70	10	9.013 902
150	60	80	10	9.013 903
250	70	95	10	9.013 904
400	80	110	10	9.013 910
600	90	125	10	9.013 911
800	100	135	10	9.013 912
1000	105	145	10	9.013 913
2000	130	185	4	9.013 914
3000	150	210	4	9.013 915
5000	170	270	2	9.013 916



### 2 Beakers, Borosilicate 3.3 glass, tall form

Borosilicate grade 3.3 glass. DIN 12 331. ISO 3819.

Capacity ml	Ext. diam. mm	Height mm	PK	Cat. No.
25	30	55	10	9.013 924
50	38	70	10	9.013 925
100	48	80	10	9.013 920
150	54	95	10	9.013 921
250	60	120	10	9.013 922
400	70	130	10	9.013 923
600	80	150	10	9.013 930
800	90	175	10	9.013 931
1000	95	180	10	9.013 932
2000	120	240	6	9.013 933
3000	135	280	6	9.013 934



### 3 Beakers, DURAN®, low form

DIN 12331. ISO 3819. With approximate graduations and spout. With easy-to-read scale and large labelling field for easy marking, in fired-on, highly durable white ceramic. *DURAN Group*  
 Due to the wall thickness, it is suitable for use as a heating vessel. Glass Type I/neutral glass as per USP, EP and JP.  
 With retrace code (Batch Identification) except 5 and 10ml. Certificate available via the Internet. Autoclavable.

Capacity ml	Dia. mm	Height mm	PK	Cat. No.
5*	22	30	1	9.013 007
10*	26	35	1	9.013 008
25	34	50	1	9.013 014
50	42	60	1	9.013 017
100	50	70	1	9.013 024
150	60	80	1	9.013 029
250	70	95	1	9.013 036
400	80	110	1	9.013 041
600	90	125	1	9.013 048
800	100	135	1	9.013 053
1000	105	145	1	9.013 054
2000	130	185	1	9.013 063
3000	152	210	1	9.013 068
5000	170	270	1	9.013 073
10000**/**	217	350	1	9.013 086

\* Without graduations.  
 \*\* Not to DIN and ISO.



### 4 Beakers Super Duty, DURAN®, low form

With approximate graduations and spout. Reinforced, sturdy rim and increased mechanical strength for heavy duty. Glass Type I/neutral glass as per USP, EP and JP. *DURAN Group*  
 With retrace code (Batch Identification). Certificate available via the Internet. Autoclavable.

Capacity ml	Dia. mm	Height mm	PK	Cat. No.
150	60	80	1	9.051 150
250	70	95	1	9.051 151
400	80	110	1	9.051 152
600	90	125	1	9.051 153
1000	105	145	1	9.051 154
2000	132	185	1	9.051 155
5000	170	270	1	9.051 156



➔ Glassware cleaners - please see page 1068



### 1 Beakers, DURAN®, tall form

DIN 12331. ISO 3819. With approximate graduations and spout. With easy-to-read scale and large labelling field for easy marking, in fired-on, highly durable white ceramic. Due to the wall thickness, it is suitable for use as a heating vessel. Glass Type I/neutral glass as per USP, EP and JP. With retrace code (Batch Identification). Certificate available via the Internet. Autoclavable.

DURAN Group

Capacity ml	Dia. mm	Height mm	PK	Cat. No.
50	38	70	1	9.013 117
100	48	80	1	9.013 124
150	54	95	1	9.013 129
250	60	120	1	9.013 136
400	70	130	1	9.013 141
600	80	150	1	9.013 148
800	90	175	1	9.013 153
1000	95	180	1	9.013 154
2000	120	240	1	9.013 163
3000	135	280	1	9.013 168



### 2 Filter beaker, DURAN®

Heavy wall. With spout. Glass type I/neutral glass as per USP, EP and JP. Autoclavable.

DURAN Group

Capacity ml	Dia. mm	Height mm	Description	PK	Cat. No.
250	70	94	with graduations	1	9.051 036
500	89	124	with graduations	1	9.051 044
1000	105	160	with graduations	1	9.051 054
2000	135	195	with graduations	1	9.051 063
3000	157	205	with graduations	1	9.051 068
5000	182	256	with graduations	1	9.051 073
10000	225	340	without graduations	1	9.051 086
15000	260	390	without graduations	1	9.051 088
20000	285	430	without graduations	1	9.051 091



### 3 Beakers, Quartz glass, low form

DIN 12332. Transparent silica (Quartz glass). Low form. With spout.

proQuarz GmbH

Capacity ml	Ext. diam. mm	Height mm	PK	Cat. No.
50	40	55	1	9.013 417
100	50	70	1	9.013 424
150	55	80	1	9.013 429
250	69	90	1	9.013 436
400	80	100	1	9.013 441



### 4 Beakers, Quartz glass, tall form

DIN 12331. Transparent silica (Quartz glass). Tall form. With spout.

proQuarz GmbH

Capacity ml	Ext. diam. mm	Height mm	PK	Cat. No.
50	38	65	1	9.013 517
100	45	80	1	9.013 524
150	52	95	1	9.013 529
250	60	115	1	9.013 536



### 5 Beakers, 18/10 steel

With rim and spout. Flat bottom for good contact with hotplates and magnetic stirrers.

Bochem

Capacity ml	Dia. mm	Height mm	PK	Cat. No.
100	50	60	1	9.013 610
250	65	85	1	9.013 611
500	80	110	1	9.013 612
1000	100	130	1	9.013 613
2000	120	180	1	9.013 614
3000	150	180	1	9.013 615
5000	180	210	1	9.013 616

### 1 Measuring jugs with handle, 18/10 steel

Graduated 200 ml.  
Heavy duty. With spout and handle.

Bochem

Capacity ml	Dia. mm	Height mm	PK	Cat. No.
1000	100	140	1	9.275 850
2000	130	170	1	9.275 852



### 2 LLG-measuring beakers, PP

**NEW!**

According to ISO 7056. Printed blue graduations.

Capacity ml	Grad. ml	Dia. mm	Height mm	PK	Cat. No.
25	5	32	47	2	9.013 670
50	10	39	60	2	9.013 671
100	10	50	70	2	9.013 672
250	25	67	93	2	9.013 673
500	50	88	119	2	9.013 674
1000	50	109	147	2	9.013 675
2000	100	133	184	1	9.013 676



# The highest quality, for a performance you can measure.



VITLAB® volumetric cylinders Class A with easy-to-read graduations due to ring marks at the primary scale points.



VITLAB® volumetric flasks Class A with individually adjusted ring-mark for highest precision.



VITLAB® volumetric flasks opaque Class A for a greater protection of light-sensitive substances.

VITLAB is one of the leading manufacturers of Liquid Handling instruments and high quality plastic laboratory products and has decades of experience in the development and production of laboratory products which are used to measure volumes. Based on DIN 12681 VITLAB was the first manufacturer to make Class A, conformity-certified measuring cylinders available in PMP plastic. With the conformity certificate VITLAB guarantees that the measuring devices are calibrated in accordance with German Calibration Regulations and ensures that the tightest tolerances for the adherence to measurement standards are maintained.

**VITLAB**   
Competence in Labware

# 1. Lab consumables

## Vessels/Beakers

### 1 Griffin beakers, PP

Food-safe, highly transparent. Printed blue graduations.

VITLAB



Material	Capacity		Dia.	Height	PK	Cat. No.
	ml	ml				
PP	10	2	25	35	1	9.013 208
PP	25	5	31	47	1	9.013 220
PP	50	10	40	60	1	9.013 228
PP	100	20	49	70	1	9.013 238
PP	150	20	56	80	1	9.013 244
PP	250	50	68	94	1	9.013 248
PP	400	50	77	109	1	9.013 209
PP	500	100	88	122	1	9.013 254
PP	600	100	91	125	1	9.013 256
PP	800	100	98	136	1	9.013 258
PP	1000	100	102	149	1	9.013 262
PP	2000	200	133	183	1	9.013 264
PP	3000	200	174	214	1	9.013 266
PP	5000	500	185	248	1	9.013 270

### 2 Griffin beakers, ETFE

Printed black graduations. Transparent. Excellent temperature and chemical resistance.

VITLAB



Capacity	Grad.	Dia.	Height	PK	Cat. No.
ml	ml	mm	mm		
25	5	32	50	1	9.013 702
50	10	39	59	1	9.013 703
100	20	50	72	1	9.013 704
250	50	67	96	1	9.013 706
400	50	77	109	1	9.013 707
500	100	88	122	1	9.013 192
600	100	91	125	1	9.013 708
1000	100	105	143	1	9.013 710

### 3 Griffin beakers, PFA

Transparent. High level of temperature and chemical resistance. Moulded graduations.

VITLAB



Material	Capacity		Dia.	Height	PK	Cat. No.
	ml	ml				
PFA	25	5	32	50	1	9.013 210
PFA	50	10	39	59	1	9.013 211
PFA	100	20	50	72	1	9.013 212
PFA	250	50	67	96	1	9.013 213
PFA	500	100	88	122	1	9.013 214
PFA	1000	100	109	141	1	9.013 215





### 1 Griffin beakers PMP (TPX)

Transparent. Printed red graduations.

VITLAB

Material	Capacity Grad.		Dia.	Height	PK	Cat. No.
	ml	ml				
PMP	10	2	25	35	1	9.013 315
PMP	25	5	31	47	1	9.013 320
PMP	50	10	40	60	1	9.013 328
PMP	100	20	49	70	1	9.013 338
PMP	150	20	56	80	1	9.013 344
PMP	250	50	68	94	1	9.013 348
PMP	400	50	77	109	1	9.013 350
PMP	500	100	88	122	1	9.013 354
PMP	600	100	91	125	1	9.013 356
PMP	800	100	98	136	1	9.013 358
PMP	1000	100	102	149	1	9.013 362
PMP	2000	200	133	183	1	9.013 364
PMP	3000	200	174	214	1	9.013 366
PMP	5000	500	185	248	1	9.013 370



### 2 LLG-measuring jugs, PP

According to ISO 7056. Printed blue graduations. Stackable.

**NEW!**

Capacity ml	Grad. ml	Dia. mm	Height mm	PK	Cat. No.
250	5	75	115	2	9.013 680
500	10	100	137	2	9.013 681
1000	10	125	167	2	9.013 682
2000	20	148	217	1	9.013 683
3000	25	170	244	1	9.013 684



### 3 Measuring jugs with handle, PP

Highly transparent, with moulded graduations overprinted in blue. Food-safe.

VITLAB

Capacity ml	Grad. ml	Dia. mm	Height mm	PK	Cat. No.
50	2	40	70	1	9.275 772
100	2	50	80	1	9.275 773
250	5	70	120	1	9.275 748
500	10	91	133	1	9.275 775
1000	10	116	170	1	9.275 776
2000	20	150	215	1	9.275 777
3000	50	170	242	1	9.275 778
5000	100	210	270	1	9.275 779



### 4 Conical measures, conical form, PP

Conical, graduated. Can withstand temperatures up to 120°C. With wide base for stability.

Kartell

Capacity ml	Grad. ml	Height mm	PK	Cat. No.
100	2	118	1	9.013 773
250	5	164	1	9.013 774
500	10	183	1	9.013 775
1000	20	263	1	9.013 776

### 1 Beakers, PTFE, Low form

With reinforced rim and spout. Ungraduated.  
Excellent chemical and temperature resistance.

BRAND

Capacity ml	Dia. mm	Height mm	PK	Cat. No.
5	20	28	1	9.013 722
10	25	33	1	9.013 723
25	33	45	1	9.013 724
50	45	60	1	9.013 725
100	55	65	1	9.013 726
150	60	70	1	9.013 727
250	70	95	1	9.013 728
400	80	105	1	9.013 729
500	80	125	1	9.013 731
1000	105	155	1	9.013 734
2000	120	210	1	9.013 735



### 2 Erlenmeyer flasks, Borosilicate glass 3.3, narrow mouth

To DIN 12380. ISO 1773. Narrow mouth. With graduations and beaded rim.

Capacity ml	Neck dia. mm	External flask Ø mm	Height mm	PK	Cat. No.
25	22	42	70	10	9.141 079
50	22	51	85	10	9.141 080
100	22	64	105	10	9.141 081
200	34	79	131	10	9.141 085
250	34	85	140	10	9.141 082
300	34	87	156	10	9.141 086
500	34	105	175	10	9.141 083
1000	42	131	220	10	9.141 084
2000	50	166	280	6	9.141 087
3000	50	187	310	6	9.141 088
5000	50	220	365	2	9.141 089



### 3 Erlenmeyer flasks, narrow neck, DURAN®

DURAN®. DIN ISO 1773. Narrow neck. With approximate graduations and beaded rim.  
Uniform wall thickness distribution makes these beakers ideal for heating applications.

DURAN Group

Erlenmeyer flasks are well suitable for mixing, because of their conical shape. Glass Type I/neutral glass as per USP, EP and JP. Autoclavable. With Retrace Code (Batch Identification), certificate available via the Internet.

Capacity ml	Base dia. mm	Neck dia. mm	Height mm	PK	Cat. No.
25	42	22	75	1	9.141 014
50	51	22	90	1	9.141 017
100	64	22	105	1	9.141 024
125*	67	28	112	1	9.141 028
150*	74	28	118	1	6.234 510
200*	79	34	131	1	9.141 032
250	85	34	145	1	9.141 036
300*	87	34	156	1	9.141 039
500	105	34	180	1	9.141 044
1000	131	42	220	1	9.141 054
2000	166	50	280	1	9.141 063
3000	187	51	310	1	9.141 068
5000	220	51	365	1	9.141 073

\* Not to ISO.

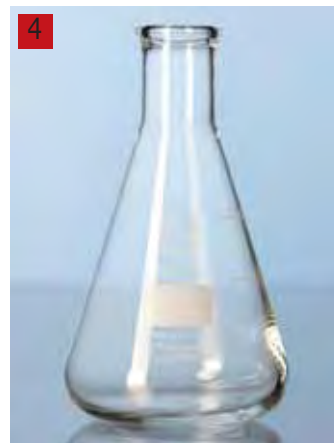


### 4 Erlenmeyer flasks DURAN® Super Duty, narrow neck

With approximate graduations. Reinforced sturdy rim, and increased mechanical strength for heavy duty. Glass type I/neutral glass as per USP, EP and JP. With Retrace Code (Batch Identification) certificate available via the Internet. Autoclavable.

DURAN Group

Capacity ml	Base dia. mm	Neck dia. mm	Height mm	PK	Cat. No.
25	42	22	75	1	9.141 270
50	51	22	90	1	9.141 271
100	64	22	105	1	9.141 272
250	85	34	145	1	9.141 273
500	105	34	180	1	9.141 274
1000	131	42	220	1	9.141 275
2000	166	50	280	1	9.141 276
5000	220	52	365	1	9.141 277





## Vessels/Flasks



### 1 Erlenmeyer flasks, Borosilicate glass 3.3, wide mouth

DIN 12385. With graduations and beaded rim.

Capacity ml	Neck dia. mm	External flask Ø mm	Height mm	PK	Cat. No.
25	32	42	70	10	9.141 186
50	34	51	85	10	9.141 180
100	34	64	105	10	9.141 181
200	50	79	131	10	9.141 187
250	50	85	135	10	9.141 182
300	50	87	156	10	9.141 183
500	50	105	170	10	9.141 184
1000	50	131	215	10	9.141 185
2000	72	153	280	6	9.141 188



### 2 Erlenmeyer flasks, DURAN®, wide neck

DIN ISO 24450. Wide neck. With approximate graduations and beaded rim. With Retrace Code (Batch Identification), certificate available via the Internet. Glass type I/neutral glass as per USP, EP and JP. Autoclavable.

DURAN Group

Capacity ml	Base dia. mm	Neck dia. mm	Height mm	PK	Cat. No.
25*	43	31	70	1	9.141 114
50	51	34	85	1	9.141 117
100	64	34	105	1	9.141 124
200	79	50	131	1	9.141 132
250	85	50	140	1	9.141 136
300	87	50	156	1	9.141 139
500	105	50	175	1	9.141 144
1000	131	50	220	1	9.141 154
2000*	153	72	276	1	9.141 163

\* Not to DIN.



### 3 Erlenmeyer flasks DURAN® Super Duty, wide neck

With approximate graduations. Reinforced, sturdy rim and increased mechanical strength for heavy duty. Glass Type I/neutral glass as per USP, EP and JP. With retrace code (Batch Identification). Certificate available via the Internet. Autoclavable.

DURAN Group

**NEW!**

Capacity ml	Base dia. mm	Neck dia. mm	Height mm	PK	Cat. No.
100	64	34	105	1	9.141 280
250	85	50	140	1	9.141 281
500	105	50	175	1	9.141 282
1000	131	50	220	1	9.141 283



### 4 Erlenmeyer flasks, borosilicate glass 3.3

Borosilicate glass 3.3. Resistant to heat and almost all chemicals. Ideal for contamination free storage of culture specimen and media. Inscriptions are in white enamel which is specially designed for glass use. Autoclavable flasks and PP screw caps are resistant up to 121°C.

Isolab

**NEW!**

Capacity ml	Height mm	Neck thread GL	PK	Cat. No.
100	110	32	1	9.141 100
250	145	32	1	9.141 101
500	180	32	1	6.242 393
1000	225	32	1	9.141 102

### 1 Erlenmeyer flasks, DURAN® with screw neck

DURAN®. With DIN screw neck, PBT-screwthread cap (autoclavable up to 180°C), and approximate graduations. The flask is suitable for storage and cultivation. Glass Type I/neutral glass as per USP, EP and JP. Autoclavable; undo cap before autoclaving. With retrace code ( Batch Identification). Certificate via internet.

DURAN Group

Capacity ml	Dia. mm	Height mm	Neck thread GL	PK	Cat. No.
100	64	109	25	1	9.141 224
250	85	149	32	1	9.141 236
500	105	180	32	1	9.141 244
1000	131	225	32	1	9.141 254



### 2 Conical flasks, PP

Highly transparent, wide neck, with screw cap made of PP, NS-stoppers can also be used (not included). Food-safe. Printed blue graduations.

VITLAB

Capacity ml	Grad. ml	Neck thread GL	Stopper NS	PK	Cat. No.
50	10	40	34/35	1	9.141 381
100	20	40	34/35	1	9.141 382
250	50	52	45/40	1	9.141 383
500	100	52	45/40	1	9.141 384
1000	200	52	45/40	1	9.141 385



### 3 Baffled flasks DURAN®

**NEW!**

With GL 45 thread

DURAN Group

- Oxygen introduction is often a limiting factor for cell growth.
- Baffled flasks cause a turbulent flow, increase the gas exchange surface and produce a higher oxygen transfer.
- Automated one-step production enables a reproducible and comparable result.
- Complete with membrane screw cap (gas exchange).

Capacity ml	Base dia. mm	Neck dia. mm	Height mm	PK	Cat. No.
250	81	30	145	1	9.141 260
500	105	30	180	1	9.141 261



### 4 Culture flasks, glass, borosilicate glass 3.3

**NEW!**

Erlenmeyer. With 3 baffles indented into the base. Beaded rim.

Capacity ml	Dia. mm	Neck dia. mm	Height mm	PK	Cat. No.
250	85	34	140	1	9.010 125
300	87	34	156	1	9.010 126
500	105	34	175	1	9.010 127
1000	131	42	220	1	9.010 128



### 5 Culture flasks, glass, borosilicate glass 3.3

**NEW!**

Erlenmeyer. With 3 baffles indented into the base. Straight neck. Suitable for metal caps.

Capacity ml	Dia. mm	Neck dia. mm	Height mm	PK	Cat. No.
100	64	38	112	1	9.010 120
250	85	38	145	1	9.010 121
500	105	38	183	1	9.010 122
1000	131	38	232	1	9.010 123



## Vessels/Flasks-Test tubes



### 1 Erlenmeyer flasks with baffles, PC

Transparent. With baffles indented into the base which increases mixing when trypsinizing and aerating in processes such as cell culture and fermentation. Autoclavable.

Nalgene

Capacity ml	PK	Cat. No.
250	1	9.140 968
500	1	9.140 969
1000	1	7.048 662
2000	1	7.048 663



### 2 LLG-Test tubes Fiolax® glass

**NEW!**

Round bottom test tubes made of high quality Fiolax® glass with beaded rim.

Ext. diam. mm	Length mm	Wall thickness mm	PK	Cat. No.
8	70	0.4 - 0.5	100	7.190 001
10	100	0.4 - 0.5	100	6.234 026
12	75	0.4 - 0.5	100	7.613 795
12	100	0.4 - 0.5	100	7.190 011
14	130	0.4 - 0.5	100	7.606 374
16	130	0.5 - 0.6	100	7.606 375
16	160	0.5 - 0.6	100	7.190 021
18	180	0.5 - 0.6	100	7.190 023
20	180	0.5 - 0.6	100	7.190 028



### 3 Test tubes, Fiolax® glass, with rim

Fiolax®. Round bottom with rim. Light-walled and resistant to rapid temperature changes and localised heating.

DURAN Group

Dia. mm	Height mm	Wall thickness mm	PK	Cat. No.
8	70	0.4 to 0.5	100	9.190 001
10	75	0.4 to 0.5	100	9.190 003
10	100	0.4 to 0.5	100	9.190 006
12*	75	0.4 to 0.5	100	9.190 008
12	100	0.4 to 0.5	100	9.190 011
14	130	0.4 to 0.5	100	9.190 013
16*	130	0.5 to 0.6	100	9.190 016
16	160	0.5 to 0.6	100	9.190 021
18	180	0.5 to 0.6	100	9.190 023
20	150	0.5 to 0.6	100	9.190 026
20	180	0.5 to 0.6	100	9.190 028
25	150	0.5 to 0.6	50	9.190 033
25	200	0.7 to 0.8	50	9.190 036
30	200	0.7 to 0.8	50	9.190 038

\* Non DIN size.



### 4 LLG-Test tubes, AR® soda-lime glass

**NEW!**

Dia. mm	Height mm	Description	PK	Cat. No.
8	70	with flange rim	100	6.201 034
10	100	with flange rim	100	6.801 073
12	100	with flange rim	100	7.607 198
14	130	with rim	100	6.800 620
16	130	with flange rim	100	6.800 382
16	160	with flange rim	100	7.600 405
20	180	with flange rim	100	7.607 778
25	150	with rim	50	6.800 621
30	200	with flange rim	50	7.600 324
15	100	without rim	100	7.651 872
16	120	without rim	100	7.651 871
18	130	without rim	100	7.652 552
30	100	without rim	81	6.235 823

➔ Caps and stoppers - please see page 17

### 1 Test tubes, AR® soda-lime glass, rimless

Rimless, with round bottom (0.8 to 1.0 mm wall thickness).

Dia. mm	Height mm	Wall thickness mm	PK	Cat. No.
8	40	0.7 ±0.03	100	9.190 200
10	70	0.9 ±0.04	100	9.190 202
10	100	0.9 ±0.03	100	9.190 205
12	75	0.7 ±0.04	200	9.190 210
12	100	0.7 ±0.04	100	9.190 215
14	100	0.9 ±0.04	100	9.190 220
14	130	0.9 ±0.04	100	9.190 225
16*	100	0.8 ±0.04	100	9.190 230
16*	160	0.8 ±0.04	100	9.190 235
18*	180	1.0 ±0.05	100	9.190 240

\* Suitable for Kapsenberg caps.



Test tube stands please see page 19.



### 2 Test tubes with spout, AR® soda glass

With spout and round bottom. 0.1ml graduations.

Capacity ml	Dia. mm	Height mm	Wall thickness mm	PK	Cat. No.
5	12	110	0.70	1	9.190 305
10	13	160	1.00	1	9.190 310
20	15	200	0.90	1	9.190 320



### 3 Test tubes, DURAN®

**NEW!**

Available rimmed or rimless. DURAN® test tubes have a heavier wall and considerable mechanical strength and excellent resistance to temperature changes.  
Glass Type I/neutral glass as per USP, EP and JP. Autoclavable.

DURAN Group

Dia. mm	Height mm	Wall thickness mm	With rim	PK	Cat. No.
8	70	0,8 - 1,0	with	100	9.190 101
10	75	0,8 - 1,0	with	100	9.190 103
10	100	0,8 - 1,0	with	100	9.190 106
12	75	0,8 - 1,0	with	100	9.190 108
12	100	0,8 - 1,0	with	100	9.190 111
13	100	0,8 - 1,0	with	100	9.190 112
14	130	0,8 - 1,0	with	100	9.190 113
16	130	1,0 - 1,2	with	100	9.190 116
16	160	1,0 - 1,2	with	100	9.190 121
18	180	1,0 - 1,2	with	100	9.190 123
20	150	1,0 - 1,2	with	100	9.190 126
20	180	1,0 - 1,2	with	100	9.190 128
25	150	1,0 - 1,2	with	50	9.190 133
25	200	1,0 - 1,2	with	50	9.190 136
30	200	1,0 - 1,4	with	50	9.190 138
8	70	0,8 - 1,0	without	100	9.190 151
10	75	0,8 - 1,0	without	100	9.190 153
10	100	0,8 - 1,0	without	100	9.190 156
12	75	0,8 - 1,0	without	100	9.190 158
12	100	0,8 - 1,0	without	100	9.190 161
13	100	0,8 - 1,0	without	100	9.190 162
14	130	0,8 - 1,0	without	100	9.190 163
16	130	1,0 - 1,2	without	100	9.190 166
16	160	1,0 - 1,2	without	100	9.190 171
18	180	1,0 - 1,2	without	100	9.190 173
20	150	1,0 - 1,2	without	100	9.190 176
20	180	1,0 - 1,2	without	100	9.190 178
25	150	1,0 - 1,2	without	50	9.190 183
25	200	1,0 - 1,2	without	50	9.190 186
30	200	1,0 - 1,4	without	50	9.190 188



## Vessels/Test tubes



### 1 Test tubes with stoppers

Round bottom test tubes with NS cone and polystoppers.. Made of DURAN® tubing.

Lenz

Length mm	Ext. NS diam. mm	PK	Cat. No.
100	16 14/23	1	9.190 410
160	16 14/23	1	9.190 416
180	18 14/23	1	9.190 418



### 2 Test tubes, graduated, DURAN®

Wall thickness approx. 1.2mm. With NS ground socket and PP stopper. Graduations of approx. volume and markings are in high contrast white enamel. Supplied singly.

BRAND

Capacity ml	Grad. ml	NS	Dia. mm	Height mm	PK	Cat. No.
10	0.10	12/21	15	165	1	9.190 508
20	0.20	14/23	17	200	1	9.190 516
25	0.20	14/23	17	220	1	9.190 521
30	0.50	14/23	19	220	1	9.190 524



### 3 Test tubes and centrifuge tubes, PS

Round or conical bottom.

**NEW!**

Greiner Bio-One

Capacity ml	Length mm	Dia. mm	Description	PK	Cat. No.
2.0	40	10.5	round bottom	3000	9.400 505
3.5	63	11.0	round bottom	3000	9.400 520
4.0	70	11.0	round bottom	2880	9.400 530
4.0	55	12.0	round bottom	3600	6.510 405
5.0	75	12.0	round bottom	2000	9.400 532
10.0	100	14.0	round bottom	1400	9.400 562
12.0	100	16.0	round bottom	1600	9.400 564
14.0	100	17.0	round bottom	1500	9.400 565
20.0	152	16.0	round bottom	1500	9.400 590
4.5	75	12.0	conical bottom	3600	9.400 901
13.0	103	16.5	conical bottom	1500	9.400 908



### 4 Test tubes and centrifuge tubes, PP

Round bottom.

**NEW!**

Greiner Bio-One

Capacity ml	Length mm	Dia. mm	PK	Cat. No.
4.0	55	12.0	3600	9.400 615
5.0	75	12.0	2000	9.400 632
12.0	100	16.0	1600	9.400 664
14.0	100	17.0	1500	9.400 665

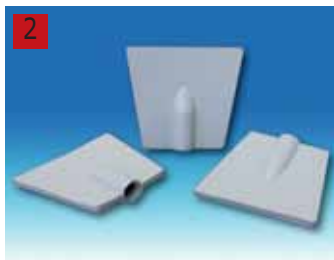
### Test tube cleaners

Rubber. For removing heavy soiling from test tubes by scraping. With 5mm boring for rod. In various styles as indicated below.

Type	Form	Width mm	PK	Cat. No.
Rubber wiper	Rod-shaped	8	1	9.190 901
Rubber wiper	Spade-shaped	35	1	9.190 902
Test tube cleaner	4 blades	30	1	9.190 903



9.190 901



9.190 902



9.190 903

→ Glas bars please see page 96

### 4 LLG-Stoppers for test tubes, PE

**NEW!**

For tubes dia. mm	Colour	PK	Cat. No.
12 to 13	neutral	100	9.231 270
12 to 13	blue	100	9.231 271
12 to 13	yellow	100	9.231 272
12 to 13	red	100	9.231 273
12 to 13	green	100	9.231 274
15 to 16	neutral	100	9.231 275
15 to 16	blue	100	9.231 276
15 to 16	yellow	100	9.231 277
15 to 16	red	100	9.231 278
15 to 16	green	100	9.231 279



### 5 Sealing caps for test tubes, versilic silicone

Transparent. Made of versilic silicone. Type number corresponds to outside diameter of the vessel to be sealed (glass, plastic or metal). Sealing caps have a slight taper and offer a very secure hold and are comfortable to use.

Ext. diam. mm	PK	Cat. No.
10	1	9.231 510
12	1	9.231 512
14	1	9.231 514
16	1	9.231 516
18	1	9.231 518
20	1	9.231 520
22	1	9.231 522
25	1	9.231 541
30	1	9.231 530
35	1	9.231 532
42	1	9.231 534
45	1	9.231 535
50	1	9.231 536



### 6 Tubes, glass, culture, screw cap, Borosilicate glass

Borosilicate glass. For culture growth, transport and storage. Heavy walled, thickness 1.1mm. Wide neck for easy inoculation and cleaning. Complete with aluminium or plastic screw cap and rubber sealing gasket. The 15ml size is specifically designed for use in centrifuges. Autoclavable. *schuett-biotec*

Capacity ml	Dia. mm	Height mm	Screw cap	PK	Cat. No.
15	16	98	Aluminium	100	9.010 612
20	16	150	Aluminium	100	9.190 600
15	16	98	Plastic	100	9.010 613
20	16	150	Plastic	100	9.190 605
50	25	150	Plastic	100	9.010 620



# 1. Lab consumables

## Vessels/Test tubes-Test tube racks



### 1 Tubes, glass, culture, screw cap, Soda-lime glass

Soda-lime glass. Autoclavable. For culture growth, transport and storage. Complete with aluminium or plastic screw cap and rubber sealing gasket. The 5ml size has a frosted marking area.

*schuett-biotec*

Capacity ml	Dia. mm	Height mm	Screw cap	PK	Cat. No.
3	12	35	Aluminium	100	9.010 608
5	14	50	Aluminium	100	9.010 602
5	14	50	Plastic	100	9.010 603
15	27	45	Plastic	100	9.010 610
20	27	50	Plastic	100	9.010 611
30	27	75	Plastic	100	9.010 601

### 2 Storage cases for culture tubes



For the protective storage and transportation of culture tubes.

Material	For	PK	Cat. No.
Polystyrene	50 jars, 35x12mm	1	9.010 609
Polypropylene, autoclavable	50 jars, 35x12mm	1	9.010 614
Wood	100 jars, 50x14mm	1	9.010 605



9.010 605



### 4 LLG-Cellulose stoppers



Cellulose, 100% chlorine-free bleached. For closing test tubes, culture flasks etc.

For int. dia. mm	PK	Cat. No.
7.5 to 8.5	4000	9.231 660
8.5 to 9.5	1000	9.231 661
9.5	2000	9.231 662
10.5 to 11.5	2000	9.231 663
9.5 to 11.5	1000	9.231 664
11.5 to 13.5	1000	9.231 665
11.5 to 13.0	1000	9.231 666
12.5 to 14.5	1000	9.231 667
13.0 to 14.5	1000	9.231 668
12.0 to 14.0	1000	9.231 669
13.5 to 15.5	500	9.231 670
17.5 to 18.5	500	9.231 671
20.5 to 22.0	400	9.231 672
19.0 to 22.5	500	9.231 673
27.0 to 32.5	1000	9.231 674
29.5 to 31.0	250	9.231 675
32.5 to 35.0	100	9.231 676
32.0 to 33.0	150	9.231 677
30.0 to 32.5	750	9.231 678
33.5 to 36.0	150	9.231 679
35.5 to 39.5	600	9.231 680
37.5 to 41.5	100	9.231 681
40.0 to 43.5	100	9.231 682
42.0 to 46.5	100	9.231 683
47.0 to 48.0	75	9.231 684



### 5 Test tube holders, wood

Wood with metal spring.

For neck dia. mm	PK	Cat. No.
Up to 20	1	9.193 992
Up to 30	1	9.193 993

### 1 Test tube stands, wood

Two tier with rods. For tubes up to 18mm diameter.

Array	For tubes dia. mm	PK	Cat. No.
2 x 6	18	1	9.193 012
2 x 9	18	1	9.193 018
2 x 12	18	1	9.193 024



### 2 Test tube racks, PP

Blue. For tubes up to 18mm in diameter. Autoclavable and unbreakable. Can be dismantled. Can be recycled.

Wagner & Munz

Array	For tubes dia. mm	PK	Cat. No.
12	18	1	9.193 112
24	18	1	9.193 124



### 3 4 Test tube racks, PLASTIBRAND®, PP

PLASTIBRAND®, PP. For all common test tube diameters. Very sturdy design. All openings are widely spaced apart to accommodate screw cap tubes. All racks have the same footprint and can be stacked easily when empty.

BRAND

Modified PP with greater density than water makes them ideal for use in water baths. Large marking area (60 x 12mm) for barcode labels and alphanumeric references for clear sample identification. Racks are supplied in three parts for quick and permanent assembly. Continuous use temperature -20 to +90°C. Autoclavable (121°C). Choice of colours as outlined below.

Array	For tubes dia. mm	Length mm	Width mm	Height mm	Colour	PK	Cat. No.
6 x 14	13	265	126	75	White	1	9.193 240
6 x 14	13	265	126	75	Blue	1	9.193 241
6 x 14	13	265	126	75	Red	1	9.193 242
6 x 14	13	265	126	75	Yellow	1	9.193 243
5 x 11	16	265	126	75	White	1	9.193 230
5 x 11	16	265	126	75	Blue	1	9.193 231
5 x 11	16	265	126	75	Red	1	9.193 232
5 x 11	16	265	126	75	Yellow	1	9.193 233
5 x 11	18	265	126	75	White	1	9.193 245
5 x 11	18	265	126	75	Blue	1	9.193 246
5 x 11	18	265	126	75	Red	1	9.193 247
5 x 11	18	265	126	75	Yellow	1	9.193 248
4 x 10	20	265	126	75	White	1	9.193 250
4 x 10	20	265	126	75	Blue	1	9.193 251
4 x 10	20	265	126	75	Red	1	9.193 252
4 x 10	20	265	126	75	Yellow	1	9.193 253
4 x 8	25	265	126	88	White	1	9.193 255
4 x 8	25	265	126	88	Blue	1	9.193 256
4 x 8	25	265	126	88	Red	1	9.193 257
4 x 8	25	265	126	88	Yellow	1	9.193 258
3 x 7	30	265	126	88	White	1	9.193 260
3 x 7	30	265	126	88	Blue	1	9.193 261
3 x 7	30	265	126	88	Red	1	9.193 262
3 x 7	30	265	126	88	Yellow	1	9.193 263





# 1. Lab consumables

## Vessels/Test tube racks



### 1 Tube racks, PP

Will not float. Alphanumeric grid referenced on top tier for easy identification of samples. Stackable when empty. Can be used in freezers or water baths. Autoclavable at 121°C for 20 min.

Kartell

Array	For tubes dia. mm	Length mm	Width mm	Height mm	Colour	PK	Cat. No.
90	13	246	105	64	white	1	6.205 483
90	13	246	105	64	blue	1	6.224 460
90	13	246	105	64	yellow	1	6.206 439
90	13	246	105	64	red	1	9.193 200
60	16	246	105	72	white	1	6.205 109
60	16	246	105	72	blue	1	6.206 347
60	16	246	105	72	yellow	1	6.206 305
60	16	246	105	72	red	1	6.204 936
40	20	246	105	72	white	1	6.205 110
40	20	246	105	72	blue	1	6.206 206
40	20	246	105	72	yellow	1	6.224 461
40	20	246	105	72	red	1	9.193 201
40	25	295	125	85	white	1	6.236 328
40	25	295	125	85	blue	1	6.236 329
40	25	295	125	85	yellow	1	6.236 330
40	25	295	125	85	red	1	9.193 202



### 2 Test tube racks, Type 5970, polyketone

3-tier grid design. Will not float. Single moulding, with no sharp edges or corners. Alphanumeric grid referenced on top tier for easy identification of samples. End plates can be labelled or written on. Autoclavable.

Nalgene

Note: Do not autoclave when loaded with filled test tubes. Do not expose to strong concentrated acids.

Type	Array	For tubes dia. mm	Colour	Length mm	Width mm	Height mm	PK	Cat. No.
5970	6 x 12	13	White	200	102	57	1	9.194 513
5970	6 x 12	13	Orange	200	102	57	1	9.194 523
5970	6 x 12	13	Yellow	200	102	57	1	9.194 533
5970	6 x 12	13	Blue	200	102	57	1	9.194 543
5970	6 x 12	13	Green	200	102	57	1	9.194 553
5970	6 x 12	13	Red	200	102	57	1	9.194 563
5970	6 x 12	16	White	248	127	70	1	9.194 514
5970	6 x 12	16	Orange	248	127	70	1	9.194 524
5970	6 x 12	16	Yellow	248	127	70	1	9.194 534
5970	6 x 12	16	Blue	248	127	70	1	9.194 544
5970	6 x 12	16	Green	248	127	70	1	9.194 554
5970	6 x 12	16	Red	248	127	70	1	9.194 564
5970	4 x 10	20	White	250	102	83	1	9.194 515
5970	4 x 10	20	Orange	250	102	83	1	9.194 525
5970	4 x 10	20	Yellow	250	102	83	1	9.194 535
5970	4 x 10	20	Blue	250	102	83	1	9.194 545
5970	4 x 10	20	Green	250	102	83	1	9.194 555
5970	4 x 10	20	Red	250	102	83	1	9.194 565
5970	4 x 10	25	White	300	121	92	1	9.194 516
5970	4 x 10	25	Orange	300	121	92	1	9.194 526
5970	4 x 10	25	Yellow	300	121	92	1	9.194 536
5970	4 x 10	25	Blue	300	121	92	1	9.194 546
5970	4 x 10	25	Green	300	121	92	1	9.194 556
5970	4 x 10	25	Red	300	121	92	1	9.194 566
5970	3 x 8	30	White	283	121	83	1	9.194 517
5970	3 x 8	30	Orange	283	121	83	1	9.194 527
5970	3 x 8	30	Yellow	283	108	83	1	9.194 537
5970	3 x 8	30	Blue	283	108	83	1	9.194 547
5970	3 x 8	30	Green	283	108	83	1	9.194 557
5970	3 x 8	30	Red	283	108	83	1	9.194 567

Also available in half sizes (Type 5972).

### 1 Test tube racks, wire/nylon

White nylon coated or stainless steel wire, electrochemically polished. 3-tier design, second tier approximately 30mm high. For 50ml test tubes.

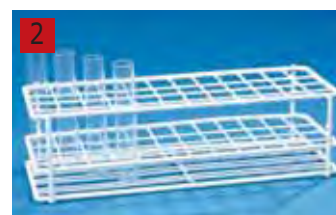
Hole size: approx. 30 x 30mm  
 Distance between each compartment: approx. 5mm



Type	Array	Length	Width	Height	PK	Cat. No.
		mm	mm	mm		
Nylon coated wire	4 x 2	150	80	80	1	9.193 970
Nylon coated wire	5 x 2	190	80	80	1	9.193 972
Nylon coated wire	6 x 2	230	80	80	1	9.193 974
Stainless steel wire	4 x 2	150	80	80	1	9.193 971
Stainless steel wire	5 x 2	190	80	80	1	9.193 973
Stainless steel wire	6 x 2	230	80	80	1	9.193 975

### 2 Test tube racks, wire/nylon

Wire with white nylon coating. 3-tier design, second tier approximately 30mm high. Opening size 18 x 18mm. Temperature resistant up to 80°C max.



Array	Height	PK	Cat. No.
	mm		
2 x 6	70	1	9.193 762
2 x 10	70	1	9.193 764
2 x 12	70	1	9.193 766
3 x 12	70	1	9.193 768
4 x 6	70	1	9.193 772
4 x 12	70	1	9.193 774
10 x 10	70	1	9.193 776
2 x 12	100	1	9.193 784
4 x 12	100	1	9.193 788

### 3 Reaction tubes stand, PE-coated wire

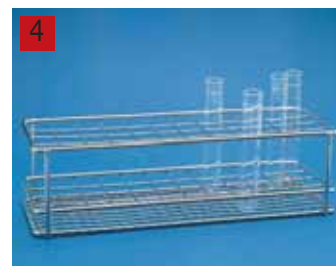
PE-coated wire. Upper tier is divided into 4 x 12 compartments approx. 20mm high. With two handles.



Array	Length	Width	Height	PK	Cat. No.
	mm	mm	mm		
4 x 12	250	90	40	1	9.409 390

### 4 Test tube racks, stainless steel

Corrosion resistant, stainless steel wire. Electrochemically polished. Opening size 18 x 18mm. Mesh grid levels are positioned at the top and 30mm above the base.



Array	Height	PK	Cat. No.
	mm		
2 x 12	70	1	9.193 824
3 x 12	70	1	9.193 836
4 x 12	70	1	9.193 848
4 x 12	100	1	9.193 948

### 5 Microtube racks 4-Way, PP

Build as large a rack as you need by linking together multiple rack units. Racks feature a unique system of tabs and slots, which facilitate easy assembly and sturdy fit. Heavy-duty polypropylene racks can hold 4 x 50ml or 12 x 15ml conical tubes, 32 x 1.5ml or 32 x 0.5ml microtubes. Autoclavable. Dimensions (L x W x H): 175 x 95 x 51mm.



Colour	PK	Cat. No.
natural	1	9.409 131
blue	1	9.409 132
green	1	9.409 133
pink	1	9.409 134
yellow	1	9.409 135
orange	1	9.409 136
blue, green, pink, yellow, orange	5	9.409 137

## Vessels/Test tube racks

**1**


### 1 Tube Racks Rota-Rack®, PP

Interlocked racks. Rotate each of the four modules independently. Use several sizes of test tubes, culture tubes, centrifuge tubes or microcentrifuge tubes at the same time. Autoclavable.

Each module of the Rota-Rack® for large tubes holds 2 x 50ml tubes, 8 x 15ml tubes, 6 x 20mm tubes or 10 x 10 to 13mm tubes. Each module of the Rota-Rack® for microtubes holds 6 x 15ml tubes, 9 x 1.5/2.0ml tubes, 12 x 0.5/0.6ml tubes or 32 x 0.2ml PCR tubes or 4 x 8-tube strips.

Description	Length mm	Width mm	Height mm	PK	Cat. No.
Rota-Rack™ for large tubes	224	110	110	1	9.193 988
Rota-Rack™ for micro tubes	210	100	100	1	9.193 989

**2**


### 2 Tube Racks Rota-Rack® Duo

**NEW!**

Works with PCR® tubes right next to centrifuge tubes. The 0.2ml tube wells oriented in standard 96-well format. Use with PCR® transfer trays. Rotate the rack to work either with 0.2ml tubes and 0.5ml tubes, with 0.2ml tubes and 1.5ml tubes or with 0.5ml tubes and 1.5ml tubes.

Or turn a module and work with a total of 96 x 1.5ml tubes. Quickly identify tubes with imprinted alphanumeric system. Autoclavable. Dimensions (L x W x H): 296 x 118 x 34mm

*Heathrow Scientific*

Type	PK	Cat. No.
Tube Rack Rota-Rack® Duo	1	9.194 000

**3**


### 3 Pop-Up™ Rack, PP

**NEW!**

Robust polypropylene construction. Simple, easy to open and close. Flatten for compact storage. Pops up for instant use. Expand and collapse when racks are needed.

For 21 x 15 and 12 x 50ml tubes. Printed grid aids rapid retrieval. Stack racks in open or closed position. Saves space when racks are not in use. Not recommended for steam sterilisation.

Dimensions (L x W x H): 255 x 137 x 72mm when expanded, 21mm high when collapsed.

*Heathrow Scientific*

Colour	PK	Cat. No.
pink	2	9.193 997
blue	2	9.193 998

**4**


### 4 Reaction tube stand PLASTIBRAND®, PP

**NEW!**

PLASTIBRAND®. Grey. Numbered positions for 20 x 1.5ml microcentrifuge tubes. Autoclavable (121°C).

Accessories: Adapter (PP) for 0.5ml microtubes.

*BRAND*

Array	Internal dimensions (W x L x H) mm	PK	Cat. No.
2/10	70 x 210 x 37	1	9.409 380
Adapter (20 Units)		20	7.020 330

**5**


### 5 Reaction tube stands Plastibrand®, glass-reinforced PP

**NEW!**

Plastibrand®. Glass-reinforced PP, density 1.2g/cm<sup>3</sup>, to prevent floating in water bath.

Temperature range: -20 to +90°C. Can be steam sterilized (to 121°C, 2 bar) according

to DIN EN 285. Choice of stands with 8 x 16 openings for 11mm diameter reaction tubes or 6 x 14 openings for 13mm diameter cryo-vessels. Stands are delivered flat-packed in two parts but can be easily and rigidly locked together.

Very robust. Stackable. Alphanumerically labelled openings.

*BRAND*

Array	Colour	For tubes dia. mm	Length mm	Width mm	Height mm	PK	Cat. No.
8 x 16	White	11	265	126	38	1	9.409 308
8 x 16	Blue	11	265	126	38	1	9.409 309
8 x 16	Red	11	265	126	38	1	9.409 312
8 x 16	Yellow	11	265	126	38	1	9.409 313
6 x 14	White	13	265	126	38	1	9.409 314
6 x 14	Blue	13	265	126	38	1	9.409 316
6 x 14	Red	13	265	126	38	1	9.409 321
6 x 14	Yellow	13	265	126	38	1	9.409 323

Heathrow Scientific

### 1 3-Way Rack, PP

Polypropylene racks connect to one another on either end. Snap together for more tube storage. Convenient finger slots are molded into the rack making them easy to pick up and move. Lowest level has 24 wells to hold individual 0.2ml tubes or strips of 8 or 12 tubes. Middle tier has 14 wells to hold 0.5ml tubes. Top tier has 12 wells to hold 1.5ml tubes. Autoclavable. Dimensions: 164 x 123 x 62mm  
Package: 6 racks, color assorted

Colour	PK	Cat. No.
natural, blue, green, purple, yellow, orange	6	9.193 990



### 2 LLG-Microtube rack, stainless steel 18/10

**NEW!**

This sloping, combination rack holds 48 x 0.2ml PCR tubes (suitable also for 8 and 12 strips), 30 x 0.5ml tubes and 12 x 1.5ml or 12 x 2.0ml tubes. Resistant against UV sterilisation, ideal for PCR workstations. Autoclavable and heat resistant (200°C). Dimensions (L x W): 220 x 95mm. Height: front 20mm, back 45mm.

Type	PK	Cat. No.
LLG-Microtube Rack	1	9.409 000



### 3 LLG-Round sample containers, PP

**NEW!**

White with screwed on lid.

Capacity ml	Dia. mm	Height mm	PK	Cat. No.
30	57.90	16.95	10	9.402 310
75	57.85	45.00	10	9.402 313
310	80.50	79.20	10	9.402 318
600	118.50	64.80	10	9.402 321
1250	118.50	127.50	5	9.402 324



### 4 Jars, PP with PP screw cap

White, complete with red PP screw cap, in safe pack with certificate of analysis.

Capacity ml	Dia. mm	Height mm	PK	Cat. No.
25	31	40	25	7.077 661
90	52	52	25	7.077 852
125	52	67	25	7.085 372
250	68	79	20	7.053 933
500	75	97	9	7.052 896
625	90	113	6	7.051 092
1000	102	127	3	7.052 895
1250	102	155	3	7.053 930



### 5 Jars, PE-HD with screw cap, PE-LD

PE-HD with PE-LD cap. Resistant to acids and chemicals. Suitable for cold storage rooms, refrigerators and freezers. Stackable. Food safe. Color: natural.

Capacity ml	Dia. mm	Height mm	PK	Cat. No.
200	98	42	1	9.033 201
400	114	55	1	9.033 202
700	114	88	1	9.033 211
1000	136	110	1	9.033 212
2000	169	143	1	9.033 213





### 1 Containers, PP with lids

BRAND

Capacity ml	Dia. mm	Height mm	PK	Cat. No.
approx. 40	56	25	1	9.402 415
approx. 80	75	30	1	9.402 420

### 2 Jars with screw cap, PP

Transparent. Excellent chemical resistance. Autoclavable - undo cap before autoclaving.

Nalgene

Capacity ml	Screw cap dia. mm	PK	Cat. No.
15	38	1	9.033 150
30	43	1	9.033 151
60	53	1	9.033 152
125	70	1	9.033 153
250	70	1	9.033 154
500	120	1	9.033 155
1000	120	1	9.033 156

### 3 LLG-Sample containers with tamper-evident cap, PS and PP

**NEW!**

White with tamper-evident cap. Multi-purpose containers e.g. for storage or transport of samples.

Capacity ml	Dia. mm	Height mm	Material container	Material Lid	PK	Cat. No.
40	36.40	51.50	PS	PE-LD	10	9.402 350
100	57.50	58.00	PP	PP	10	9.402 353
250	63.50	95.20	PS	PE-LD	10	9.402 356
1000	116.00	115.50	PP	PP	5	9.402 359



### 4 Jars with snap cap, PE-LD

Slightly tapered with snap cap attached which snaps tightly closed when pressed.

Kartell

Capacity ml	Dia. mm	Height mm	PK	Cat. No.
1	8.0	32.0	100	9.401 805
3	14.0	31.5	1	9.401 820
5	15.0	49.0	1	9.401 822
7	22.8	32.9	1	9.401 830
8	17.2	57.6	1	9.401 825
20	24.8	74.5	1	9.401 835
25	31.3	52.5	1	9.401 838
35	31.0	74.5	1	9.401 840

### 1 Containers, PP with snap on caps, PE-LD

Transparent with snap-on PE-LD cap. Food-safe.

VITLAB

Capacity ml	Dia. mm	Height mm	PK	Cat. No.
12	22	37	1	9.402 774
50	30	97	1	9.402 782
160	50	110	1	9.402 784



### 2 Rolled rim bottles, AR glass with PE snap-on lid

With PE snap-on lid. Tight closing.

Capacity ml	Height mm	Dia. mm	PK	Cat. No.
3	30	19	200	9.400 211
5	40	19	200	9.400 215
10	50	21	200	9.400 220
10	45	22	200	9.400 225
15	52	24	200	9.400 235
20	55	27	200	9.400 240
20	70	25	200	9.400 250
25	50	30	250	9.400 230
30	75	28	200	9.400 260
40	80	30	200	9.400 270
50	100	30	200	9.400 280
100	145	34	100	9.400 290



### 3 Jars with snap-on lid, PE-HD

Cylindrical jars with insert and cap. Suitable for powders and solid specimens due to large neck. Resistant to chemicals. Suitable for food. Temperature range : -50 to +80°C.

Kartell



Capacity ml	Dia. mm	Height mm	Neck i. d. mm	PK	Cat. No.
70	50	60	36	1	6.205 920
120	56	71	36	1	6.206 304
250	69	94	50	1	6.205 857
500	86	107	70	1	6.205 921
1000	111	128	85	1	6.205 922
1500	111	182	87	1	6.226 130
2000	111	235	87	1	6.223 901



### 4 Jars with screw cap, PE-LD

Heavy walled jar and screw cap with cone liner.

Kartell

Capacity ml	Ext. diam. mm	Height mm	PK	Cat. No.
5	21	35.7	1	9.401 850
10	21	58.4	1	9.401 851
30	35	53.0	1	9.401 852
60	35	94.2	1	9.401 853
90	55	63.4	1	9.401 854
180	55	109.6	1	9.401 855



### 5 Storage jars, series 376, PE-HD

Natural round jars without lid. The wide mouth allows for easy filling and cleaning. Black caps available with PE foam leakproof wad - please order separately.

Kautex

Capacity ml	Thread external dia. mm	Height mm	PK	Cat. No.
100	40	77	1	9.073 388
250	50	98	1	9.073 389
500	65	122	1	9.073 390
750	65	130	1	9.073 391
1000	80	153	1	9.073 392
1500	80	173	1	9.073 393
2000	80	192	1	9.073 394

Height in mm without lid.



## Vessels/Containers



### 1 Caps for storage jars, series 376, PP

Black, screw cap with PE-foam insert.

Kautex

For jars	Thread external dia.	PK	Cat. No.
ml	mm		
100	40	1	9.073 071
250	50	1	9.073 072
500 and 750	65	1	9.073 073
1000, 1500 and 2000	80	1	9.073 074



### 2 Storage boxes, PE-HD with tightly closing PE-LD lid

PE-HD. With tightly closing PE-LD lid. Suitable for cold storage rooms and refrigerators. Temperature range/withstands temperatures (without mechanical stress) from -40 to +95°C. Stackable. Acid and chemical resistant. Food safe. Colour: natural.

Capacity	Width	Length	Height	PK	Cat. No.
L	mm	mm	mm		
0.50	103	103	64	1	9.033 270
1.00	103	103	127	1	9.033 275
1.00	103	208	64	1	9.033 280
1.50	103	208	94	1	9.033 285
2.00	103	255	94	1	9.033 286
2.00	208	208	64	1	9.033 287
3.50	208	208	94	1	9.033 288



### 3 Jars with screw cap, PC

Cylindrical. Very durable. Stackable. Non-toxic. Suitable for cold storage rooms and refrigerators. Autoclavable - remove cap before autoclaving.

Nalgene

Capacity	Screw cap dia.	Colour	PK	Cat. No.
ml	mm	mm		
15	38	transparent	1	9.033 181
30	43	transparent	1	9.033 182
60	53	transparent	1	9.033 183
125	70	transparent	1	9.033 184
250	70	transparent	1	9.033 185
500	120	transparent	1	9.033 186



### 4 Multi-purpose jars, PS

Multi-purpose, Polystyrene jar without cap.

**Please order cap separately.**

Nunc

Capacity	Dia.	Height	PK	Cat. No.
ml	mm	mm		
12.5	27	29	1	9.402 012
20.0	27	41	1	9.402 020
30.0	27	60	1	9.402 030
50.0	41	49	1	9.402 050
100.0	53	54	1	9.402 100



### 5 Lids, PE for multi-purpose jars, PS

Nunc

For jars	PK	Cat. No.
ml		
12.5 / 20 / 30	1	9.402 212
50	1	9.402 250
100	1	9.402 300



### 6 Sample jars with screw cap, PFA

PFA Jar and cap. For sampling, transportation and storage of samples. High chemical resistance.

VITLAB

Capacity	Neck thread	Dia.	Height	PK	Cat. No.
ml	GL	mm	mm		
30	40	38	54	1	9.401 810
60	40	38	90	1	9.401 812
90	56	54	62	1	9.401 814
180	56	54	112	1	9.401 816

### 1 Jars with screw cap, PFA NEW!

Translucent, non-porous, sturdy design with screw cap with 2 connections for tubing  
O.D. 6.35mm (1/4").

BOLA

Capacity	Height	Ext. diam.	Int. dia.	PK	Cat. No.
ml	mm	mm	mm		
120	74	66	60	1	9.013 761
240	116	66	60	1	9.013 762
360	109	85	80	1	9.013 763



### 2 Jars, DURAN®, low form

With removable, drop-on cover. Without handle.

DURAN Group

Ext. diam.	Height	PK	Cat. No.
mm	mm		
60	40	1	9.033 018
80	50	1	9.033 026
100	60	1	9.033 029
150	80	1	9.033 034



### 3 Universal cans, Unicon, aluminium

Pure aluminium. Cylindrical, with drop-on cover.

schuett-biotec

For sterilization and storage of pipette tips and small components made of glass or plastic. Accessory pipette tip rack inserts are available for Unicon 3, for easy dispensing after sterilization.

Type	For	Dia. mm	Height mm	PK	Cat. No.
Unicon 1	centrifuge tubes	120	115	1	9.010 875
Unicon 2	test tubes	120	175	1	9.010 870
Unicon 3	pipette tip insert rack	170	170	1	9.010 865
Unicon 4	small glassware items	170	270	1	9.010 860



### 4 Buckets, PP NEW!

With metal handle, graduated.

Igefa GmbH & Co.KG

Capacity	Colour	PK	Cat. No.
L			
10	white	1	9.040 216



### 5 Buckets, PE-HD

White PE-HD, graduated bucket.

VITLAB

Supplied without lid. Please order lid separately.

Capacity	Dia.	Height	PK	Cat. No.
L	mm	mm		
5	250	240	1	9.040 006
10	290	300	1	9.040 012



### Lids PE-LD for buckets PE-HD

VITLAB

For bucket	PK	Cat. No.
l		
5	1	9.040 206
10	1	9.040 212



## Vessels/Buckets



### 1 Buckets with spout, PP

Transparent with spout. Graduated with good chemical resistance. Food-Safe.

VITLAB

Capacity L	Dia. mm	Height mm	PK	Cat. No.
12	310	300	1	9.040 022
15	310	370	1	9.040 025



Pumpen | Probennehmer | Laborbedarf  
Pumps | Samplers | Plastic Labware

**Bürkle GmbH** Rheinauen 5 | D - 79415 Bad Bellingen  
Telefon +49 (0) 76 35 8 27 95-0 | Telefax +49 (0) 76 35 8 27 95-31  
info@buerkle.de | www.buerkle.de



### 2 Buckets with lid, PP

For transport, packaging and storage of foodstuffs, building materials and non-corrosive chemicals

Bürkle

- white PP
- with hermetically sealing lid

Capacity L	Dia. mm	Height mm	PK	Cat. No.
1	132	131	1	9.040 000
2	175	132	1	9.040 001
3	225	123	1	9.040 002
5	225	194	1	9.040 003
10	268	263	1	9.040 004

Height with lid



### 3 Buckets, series 610/615, PE-LD

Graduated.

Kautex

- thick-walled
- very stable
- durable
- litre scale
- laboratory and industrial bucket (white) with plastic coated steel carrying handle
- builder's bucket (grey) with rust-free handle

**Type 1: with spout**  
**Type 2: without spout**

Type	Capacity L	Colour	Base dia. mm	Top dia. mm	Height mm	PK	Cat. No.
1	10	white	193	280	300	1	9.040 110
1	15	white	235	316	335	1	9.040 115
2	10	white	212	253	279	1	9.040 010
2	10	grey	212	253	279	1	9.040 011

# 1. Lab consumables

## Vessels/Buckets-Aspirators and Carboys

### 1 Buckets, 18/10 steel NEW!

Graduated. With handle.  
Lids - Order separately.

Bochem

Capacity L	Dia. mm	Height mm	PK	Cat. No.
6	260	190	1	9.040 325
10	280	235	1	9.040 330
12	300	270	1	9.040 332
15	310	305	1	9.040 335



### 2 Lids for buckets 18/10 stainless steel NEW!

Bochem

For buckets	Dia. mm	PK	Cat. No.
6L	260	1	7.623 893
10L	280	1	6.901 567
12L	300	1	7.636 628
15L	310	1	7.612 465



### 3 Transport containers with lid and handle, 18/10 steel

Bochem

Height mm	Dia. mm	Capacity L	PK	Cat. No.
140	100	1	1	9.039 921
150	130	2	1	9.039 922
180	155	3	1	9.039 923
240	175	5	1	9.039 925
280	175	6	1	9.039 926
300	220	10	1	9.039 928



### 4 Kegs, wide mouth, PE-HD, UN approved

PE-HD. White, with red lid. UN-approved for Packaging groups I, II and III. Suitable for use with foodstuffs. Max. filling temperature of 80°C. Product must have cooled down to 30°C before the barrel is closed and stacked. All barrels can be sealed airtight, watertight and water-vapour tight.

Capacity L	Dia. mm	Height mm	PK	Cat. No.
3.60	198	175	1	9.050 020
6.40	198	266	1	9.050 021
10.40	274	239	1	9.050 019
15.40	274	328	1	9.050 022
20.00	274	418	1	9.050 018
26.40	316	424	1	9.050 023



### 5 Kegs, wide mouth, PE NEW!

Behr

Capacity L	Dia. mm	Height mm	Central neck	PK	Cat. No.
10.4	274	239	Ø 204 mm	1	6.800 205
15.4	274	328	Ø 204 mm	1	6.200 593
26.0	316	426	Ø 204 mm	1	6.078 171
54.0	410	518	Ø 282 mm	1	6.900 353
68.5	410	632	Ø 282 mm	1	6.401 093





### 1 Wide mouth containers, with closure, 357 series, PE-HD

Multi-sided (octagonal), natural PE-HD, with screw closure. With an extra-large neck opening, this container is ideal for disposal, storage, collection, transport, waste and sampling of dry substances.

Kautex

Capacity	Dia.	Height	Neck dia.	Thread external dia.	PK	Cat. No.
L	mm	mm	mm	mm		
5	190 x 180	230	108	120	1	9.073 036
10	230 x 222	303	108	120	1	9.073 042



### 2 Wide mouth containers, 311 series, PE-HD

Natural. Square with recessed handle. Large, wide mouth containers designed to be space-saving. Safe and easy to use. Ideal for storing, collecting and transporting dry substances.

Kautex

**Type 1: Tamper-evident cap 9.072 893 please order separately.**  
**Type 2: Supplied with closure.**

Type	Capacity	Height	Thread external dia.	PK	Cat. No.
	ml	mm	mm		
1	2300	188	80	1	9.072 932
2	4400	263	120	1	9.072 934



### 3 Tamper-evident cap for 311 series, PP

Blue, with conical seal and tamper-evident ring for 2.3L wide mouth containers. Immediately indicates unauthorised opening. Perfect for determining whether the cap has been removed.

Kautex

For	PK	Cat. No.
Type 2300, art. nr. 9.072 932	1	9.072 893



### 4 Aspirator bottles, PE-HD

With metal carrying handle, without stopcock. Acid and chemical resistant. Stopcocks 9.002 670 and 9.002 671 are suitable for use with these bottles. With UV protection for long life. Food safe.

Capacity	Ext. diam.	Height	PK	Cat. No.
L	mm	mm		
5	167	348	1	9.002 601
10	210	427	1	9.002 602
25	275	580	1	9.002 603



### 5 Aspirator bottles, series 350, PE-HD

Natural with printed blue graduations (in L) and screw closure. With or without threaded connection at base. Inside neck diameter 50mm.

Kautex

**Please order stopcock separately.**

Capacity	Stopcock connection	Handle	Ext. diam.	Height	PK	Cat. No.
L			mm	mm		
5	without	1	167	330	1	9.011 009
10	without	1	206	427	1	9.011 010
25	without	2	278	580	1	9.011 025
60	without	2	346	823	1	9.011 060
5	with	1	167	330	1	9.011 069
10	with	1	206	427	1	9.011 071
25	with	2	278	580	1	9.011 072
60	with	2	346	823	1	9.011 076

Height in mm without cap.

### 1 Accessories for series 350 aspirator bottles

Type	Figure	PK	Cat. No.
Stopcock, blue PE-HD	a	1	9.011 181
Blanking plug, natural PE-HD	b	1	9.011 170
Stopcock, blue PP	c	1	9.139 997
Reducer, blue for 9.193 997	d	1	9.011 078



### 2 Bottles, carboy, heavy walled, narrow neck, PE-HD

PE-HD. Heavy-walled (2mm thick), robust bottles which can withstand considerable abuse. The insert plug and soft seal cap make them leakproof and suitable as pressurised vessels. The cap can be wired down for added safety. Complete with carrying handles.

Kartell

Capacity	Int. dia. mm	Ext. dia. mm	Body dia. mm	Height mm	Handle	PK	Cat. No.
5	52.5	62.5	170	345	1	1	9.139 929
10	52.5	62.5	210	425	1	1	9.139 930
25	79.5	95.5	280	565	2	1	9.139 931
50	79.5	95.5	350	700	2	1	9.139 932



### 3 Wide mouth containers, heavy wall, PE-HD

PE-HD. Very resistant bottles, ideal for liquid or powders. Wide mouth for easy filling and emptying. Insert seal for completely leakproof closure. Caps can be wired down for safety. Tommy bar lugs on 10L capacity to assist release. Carrying handles.

Kartell

Capacity	Int. dia. mm	Ext. diam. mm	Body dia. mm	Height mm	Handle	PK	Cat. No.
5	84	94	170	340	1	1	9.139 938
10	98	108	210	415	1	1	9.139 939

### 4 Aspirator bottles, heavy duty, PE-HD

PE-HD. Designed for life time service. Can be used in sub-zero temperatures. Very sturdy construction with 2mm wall thickness. Translucent. The 3/4" BSP tap (supplied) engages with a 12mm deep thread in the aspirator for total leakproof performance.

Kartell

Capacity	Int. dia. mm	Ext. dia. mm	Body dia. mm	Height mm	Handle	PK	Cat. No.
litres							
5	52.5	62.5	170	345	1	1	9.139 933
10	52.5	62.5	210	425	1	1	9.139 934
25	79.5	95.5	280	565	2	1	9.139 935
50	79.5	95.5	350	700	2	1	9.139 936



### 1 Stopcock, 3/4", for Aspirator bottles

For 9.139 933 to 9.139 936.

Kartell

Type	PK	Cat. No.
Tap for aspirator bottles	1	9.139 937

### 2 3 Bottles Type 2250 with handle, PP

With 83mm diameter. With screw cap and shoulder handles. Graduated. For nutritive media, distilled water or other solutions. Leakproof. Not for use with aggressive substances. Neck also accepts stoppers, 36mm in height and a top/bottom diameter of 75/62mm. Autoclavable - for best results, autoclave using a properly vented closure.

Nalgene

Type	Capacity L	Description	PK	Cat. No.
2250	10	with stopcock	1	9.002 721
2250	20	with stopcock	1	9.002 722
2250	50	with stopcock	1	9.002 723
2250	10	without stopcock	1	9.011 102
2250	20	without stopcock	1	9.011 103
2250	50	without stopcock	1	9.011 104



### 4 Aspirator carboys with spigot Type 2322, PC

Transparent. With PP stopcock. Graduated. Leakproof. Robust. Suitable for use in cold rooms. Autoclavable, before autoclaving, unscrew cap and set on bottle neck.

Nalgene

Type	Capacity L	Width mm	Depth mm	Height mm	PK	Cat. No.
2322	9	216	146	362	1	9.139 916
2322	20	318	219	381	1	9.139 917

### 5 Aspirator carboys Type 2320, PE-HD

With PP stopcock. Graduated. Leakproof. Stable. Rigid. Suitable for use in cold rooms.

Nalgene

Type	Capacity L	Width mm	Depth mm	Height mm	PK	Cat. No.
2320	9	216	146	356	1	9.139 918
2320	20	318	219	381	1	9.139 919

### 1 Aspirator carboys Type 2321, PP

Aspirator carboy with screw cap and stopcock made of PP. With stainless steel handle. Graduated. Inside diameter of 86mm neck opening. Robust. Autoclavable only when empty, before autoclaving, unscrew cap.

Nalgene

Type	Capacity L	Width mm	Depth mm	Height mm	PK	Cat. No.
2321	9	216	146	356	1	9.139 921
2321	20	318	219	381	1	9.139 922



### 2 Carboys Type 2211, PE-HD

With PP screw cap. Robust. Space-saving. With graduations and stainless steel handles. Inside diameter 86mm neck opening. The 20L carboy has recessed handles.

Nalgene

Type	Capacity L	Width mm	Depth mm	Height mm	PK	Cat. No.
2211	9	216	146	343	1	9.139 906
2211	20	318	219	381	1	9.139 907



### 3 Stopcocks, quick action Type 6422, 6432, PP or ETFE

Type 6422 PP. Autoclavable. Standard stopcock with quick acting closure. Accepts tubing with an inside diameter of up to 16mm. For tubing with an inside diameter of 6.4mm to 7.9mm. PE-HD adapter is provided.

Nalgene

Type 6432. Autoclavable. Housing and plugs made of Tefzel® ETFE. For tubing with an inside diameter of 6.4mm to 7.9mm. Without adapter.

Type	Material	PK	Cat. No.
6422	PP	1	9.139 925
6432	ETFE	1	9.139 926

Tefzel® is registered trademark of DuPont.



### 4 Space saving carboys Flachmann LaboPlast®, PP

**NEW!**

The compact jerrycan Flachman is ideal as a space-saving canister with a width of 6.5cm. Different liquids can be stored and decanted in a small space. Flachmann can also be stored lying on its side e. g. in a refrigerator. It is very stable due to ribbed structure and thick sides. Using the support stand for two or three canisters, any number of canisters can safely be placed in the open. The compact jerrycan can also be used as a settling canister.

- With or without threaded connector 3/4"
- PP, transparent
- Canister without valve autoclavable
- Volume: 5L
- Dimensions (WxDxH): 65 x 335 x 335mm
- Graduations: 250ml
- With moulded, indestructible litre graduation

#### Space-saving Compact set: Flachmann LaboPlast® canister and Compact stopcock

The Flachmann canister is ideal to store and decant liquids in a small space. The Compact stop cock for canisters and barrels features an impressive compact design, which makes the stopcock ideal for use in refrigerators and on racks, etc.



Type	PK	Cat. No.
with screw neck, with tamper-evident cap, PP, blue	1	9.140 002
without screw neck, with tamper-evident cap, PP, blue	1	9.140 001
Set Compact with stopcock Compact (9.140 003)	1	9.140 004
Set with StopCock (9.139 997)	1	9.140 011

# 1. Lab consumables

## Vessels/Aspirators and Carboys



Bürkle



9.139 997

### Drain Siphons LaboPlast®

#### Drain Siphon StopCock

- With rotatable spout, preventing drips
- With tapered spout for bottles with narrow openings from diameter 6 to 8mm
- Fits screw threads with R 3/4"
- Pressure proof to 2 bar at 20°C without discharge angle
- Seals made of PTFE und PE, parts in contact with media made of PP, PE and PTFE

#### Drain Siphon Compact

- Compact design, the short discharge does not protrude out over the lower edge of the container
- The specially optimised design of the discharge forms an even stream of liquid with no splashing or spattering
- The Compact stop cock fits all containers with R 3/4" connecting threads
- PP, PE and PTFE are materials that offer outstanding chemical resistance to acids and bases

#### Drain Siphon StopCock PA

- Made of polyamide electroconductive, can be grounded separately
- Ideally suited for solvents
- Inexpensive alternative to stainless steel stopcocks
- PTFE seal
- Including adapter for 3/4" inner thread made of PA electroconductive
- Fits all containers with 3/4" outer thread and with included adapter, to all 3/4" inner threads
- Pressure proof to 2bar at 20°C without discharge angle



9.140 003



9.140 000

Type	PK	Cat. No.
Drain Siphon StopCock	1	9.139 997 <b>1</b>
Drain Siphon Compact	1	9.140 003 <b>2</b>
Drain Siphon StopCock PA	1	9.140 000 <b>3</b>



### 4 Wide-mouth jerrycans, PE-HD

PE-HD. 88mm neck opening. Offers UV protection. With thread and stopper on the narrow side. Wide thread 22mm. Food safe. Angle valves for 9.002 670 and 9.002 671, 10L variant with additional small spout.

Capacity L	Width mm	Depth mm	Height mm	PK	Cat. No.
10	154	302	397	1	9.139 975
22	180	370	475	1	9.139 970



### 5 Angled stopcocks, PE-HD

PE-HD. With spout attachment 12mm (1/2") diameter and 22mm threaded connector. For bottles and wide-mouth carboys. Acid and chemical resistant, pressure resistant up to 1.5 bar. For 9.139 975 and 9.139 970. Food safe.

Description	PK	Cat. No.
Angled stopcock, straight	1	9.002 670
Angled stopcock, curved	1	9.002 671



### 1 Carboys behroplast®, PE

Polyethylene, with welded stopcock. Leakproof, even after prolonged use.

Behr

Capacity L	Width mm	Length mm	Height mm	PK	Cat. No.
5	160	190	240	1	9.140 100
10	190	190	360	1	9.140 101
15	170	380	370	1	9.140 097
20	250	280	370	1	9.140 098
25	240	300	450	1	9.140 099
30	260	300	450	1	9.140 102
60	330	390	670	1	9.140 103



### 2 Carboys, PE-HD

White, transparent with wide screw cap and handle.

Behr

Capacity L	Length mm	Width mm	Height mm	Central neck mm	PK	Cat. No.
5	130	160	280	dia. 85mm	1	6.201 006
15	380	170	370	dia. 80 mm	1	6.302 202

**NEW!**



### 3 Industrial jerrycans, PE-HD

Jerrycans with capacity of 2 to 30L.  
Please order closures separately.

Kautex

Capacity L	Width mm	Depth mm	Height mm	Weight g	Thread external dia. mm	Colour	PK	Cat. No.
2.00	145	109	196	110	45	natural	1	9.140 021
2.50	153	115	208	125	45*	natural	1	9.140 022
3.00	153	115	240	140	45*	natural	1	9.140 023
5.00	190	145	251	250	50*	natural	1	9.140 025
6.00	192	145	294	265	45	natural	1	9.140 026
8.00	230	190	270	320	45	natural	1	9.140 027
10.00	230	190	310	450	50*	natural	1	9.140 030
20.00	290	246	385	950	60*	blue	1	9.140 032
25.00	290	246	450	1100	60*	blue	1	9.140 031
30.00	320	284	435	1250	60*	blue	1	9.140 033
20.00	290	246	385	950	60*	natural	1	9.140 037
30.00	320	284	435	1250	60*	natural	1	9.140 038

\* With UN approval.





# 1. Lab consumables

## Vessels/Aspirators and Carboys-Wide mouth bottles



### 1 Screw cap, PE-HD

Kautex

Description	For	PK	Cat. No.
Black, with tear-off ring and vent	2 / 2.5 / 3 / 6 / 8 litre jerrycans	1	9.140 048
Black, with tear-off ring and vent	5 / 10 litre jerrycans	1	9.140 068
Black, with tear-off ring and vent	20 / 25 / 30 litre jerrycans	1	9.140 050
Black, with tear-off ring	2 / 2.5 / 3 / 6 / 8 litre jerrycans	1	9.140 051
Black, with tear-off ring	5 / 10 litre jerrycans	1	9.140 046
Black, with tear-off ring	20 / 25 / 30 litre jerrycans	1	9.140 047
Red, with tear-off ring	2 / 2.5 / 3 / 6 / 8 litre jerrycans	1	9.140 040
Red, with tear-off ring	5 / 10 litre jerrycans	1	9.140 042
Red, with tear-off ring	20 / 25 / 30 litre jerrycans	1	9.140 043
With stopcock	2 / 2.5 / 3 / 6 / 8 litre jerrycans	1	9.140 062
With stopcock	5 / 10 litre jerrycans	1	9.140 061
With stopcock	20 / 25 / 30 litre jerrycans	1	9.140 063
With pump dispenser	2 / 2.5 / 3 / 6 / 8 litre jerrycans	1	9.140 054
With pump dispenser	10 litre jerrycans	1	9.140 065
With pump dispenser	20 litre jerrycans	1	9.140 070
With pump dispenser	25 litre jerrycans	1	9.140 071
With pump dispenser	30 litre jerrycans	1	9.140 072
Wrench, PE-HD to apply / remove	2 / 2.5 / 3 / 6 / 8 litre jerrycans	1	9.140 073
Wrench, PE-HD to apply / remove	5 / 10 / 20 / 25 / 30 litre jerrycans	1	9.140 108



### 2 Laboratory bottles, Borosilicate glass 3.3.

NEW!

Borosilicate glass 3.3. DIN 168 - 1. EN ISO 4796-1.  
With graduations, pouring ring, PP screw cap and ISO thread.

Capacity	Ext. diam.	Height	Neck thread	PK	Cat. No.
ml	mm	mm	GL		
100	56	105	45	10	9.072 331
250	70	143	45	10	9.072 332
500	86	182	45	10	9.072 334
1000	101	230	45	10	9.072 335
2000	136	260	45	10	9.072 336
5000	186	355	45	1	9.072 337
10000	234	435	45	1	9.072 338
20000	288	505	45	1	6.802 824



### 3 Laboratory bottles, DURAN®

NEW!

DURAN Group

DURAN®. Graduated and DIN thread ISO 4796-1. Neutral glass/Type I glass in compliance with USP/EP. A ring-shaped moulding on the shoulder of the 100 to 2000ml bottles enables the filling height of the nominal capacity to be visible. With Retrace code (Batch identification). Certificate available via the Internet.

**Please order cap and pouring ring separately.**

Capacity	Dia.	Height	Neck thread	PK	Cat. No.
ml	mm	mm	GL		
25	36	70	25	1	9.072 013
50	46	87	32	1	9.072 020
100	56	100	45	1	9.072 011
150	62	110	45	1	9.071 683
250	70	138	45	1	9.072 012
750	95	203	45	1	9.071 684
500	86	176	45	1	9.072 015
1000	101	225	45	1	9.072 016
2000	136	260	45	1	9.072 017
3500	160	295	45	1	9.071 685
5000	182	330	45	1	9.072 018
10000	227	410	45	1	9.072 019
20000	288	510	45	1	9.072 014

**1 Laboratory bottles**



DURAN Group

DURAN®. To ISO 4796-1. DIN thread and approximate graduations. A ring-shaped moulding on the shoulder of the 100ml to 2000ml bottles makes the filling height of the nominal capacity visible. The 25ml bottle has a specially shaped glass rim for pouring (eliminating the need for an additional pouring ring). Neutral glass/Type I glass in compliance with USP/EP and JP. With easy to read scale and large labelling field for easy marking, in fired-on, highly durable white ceramic. With Retrace code (Batch identification). Certificate available via the Internet. Autoclavable. **With blue PP screw cap and pouring ring.**



Temperature (max): 140°C

Capacity	Ext. diam.	Height*	Neck thread	PK	Cat. No.
ml	mm	mm	GL		
25	36	74	25	1	9.072 003
50	46	91	32	1	9.072 000
100	56	105	45	1	9.072 001
150	62	110	45	1	9.071 680
250	70	143	45	1	9.072 002
500	86	181	45	1	9.072 005
750	95	203	45	1	9.071 681
1000	101	230	45	1	9.072 010
2000	136	265	45	1	9.072 007
3500	160	295	45	1	9.071 682
5000	182	335	45	1	9.072 008
10000	227	415	45	1	9.072 004
15000	268	450	45	1	7.076 312
20000	288	510	45	1	9.072 009

\*Height mm incl. cap

**2 Laboratory bottles**



DURAN Group

DURAN®. ISO 4796-1, Amber with DIN thread. Neutral glass/Type I glass acc. to USP/EP and JP. Autoclavable. With approximate graduations. A ring-shaped moulding on the shoulder of the 100 to 2000ml bottles makes the filling height of the nominal capacity visible. The 25ml bottle has a specially formed rim for pouring (eliminating the need for an additional pouring ring). UV protection up to 500nm. Unaffected DURAN® properties within the bottle, as colour is applied only to the outer surface. Very uniform, durable and chemically resistant, amber colour due to innovative technology. With Retrace code (Batch identification). Certificate available via the Internet. **Please order screw cap and pouring ring separately.**



Capacity	Dia.	Height	Neck thread	PK	Cat. No.
ml	mm	mm	GL		
25	36	70	25	1	9.071 979
50	46	87	32	1	9.071 980
100	56	100	45	1	9.071 981
150	62	100	45	1	9.071 686
250	70	138	45	1	9.071 982
500	86	176	45	1	9.071 983
750	95	203	45	1	9.071 687
1000	101	225	45	1	9.071 984
2000	136	262	45	1	9.071 985
3500	160	295	45	1	9.071 688
5000	182	330	45	1	9.071 987
10000	227	410	45	1	9.071 988
15000	268	445	45	1	7.021 486
20000	288	505	45	1	9.071 989

We can supply this  
manufacturer's  
whole  
product range !



# 1. Lab consumables

## Vessels/Wide mouth bottles



### 1 Safety-coated bottles, DURAN®

**NEW!**
*DURAN Group*

Glass laboratory bottles with DIN thread to ISO 4796. Safety-coated in plastic (DURAN® Protect). Neutral glass/Type I acc. to USP/EP. With Retrace code (Batch identification). Certificate available via the Internet.

DURAN® Protect is a resistant and transparent plastic coating based on a cross-linked co-polymer (polyurethane) applied onto DURAN® 3.3 borosilicate glass. The coating made from PU adheres to the glass surface and fulfils the following functions:

- protects the glass surfaces against mechanical damage (**scratch protection**)
- keeps fragments together in the event of glass breakage (**shatter protection**)
- minimises loss of fluid in the event of glass breakage

**(leak and spray protection)**

- absorbs UV rays up to a light wavelength of 380 nm (**light protection**)

**Temperature resistance**

Do not subject to an open flame or direct heat (e.g. on a laboratory hotplate).

The max. temperature sustained is 135°C - continuous use at this temperature (>30 mins.) should be avoided.

DURAN® Protect is suitable for freezing (down to -30°C) and for use in microwaves.

**Please order cap and pouring ring separately.**

Capacity	Ext. diam.	Height	Neck thread	PK	Cat. No.
ml	mm	mm	GL		
100	56	100	45	1	9.071 991
150	62	110	45	1	9.071 689
250	70	138	45	1	9.071 992
500	86	176	45	1	9.071 995
750	95	203	45	1	9.071 690
1000	101	225	45	1	9.071 996
2000	136	260	45	1	9.071 997
3500	160	295	45	1	9.071 691
5000	182	330	45	1	9.071 998

▶ Bottle carriers - please see page 75



### 2 Reagent bottles, pressure resistant

*DURAN Group*

DURAN® reagent bottles, DIN thread, ISO 4796. Pressure resistance, as a result of amended shape, in the range of -1 up to +1.5 bar (tested by the TÜV in accordance with EN 1596, with GS mark). Neutral/Type 1 glass in accordance with USP/EP. With Retrace code (Batch identification). Certificate available via the Internet.

**Please order cap and pouring ring separately.**

Capacity	Ext. diam.	Height	Neck thread	Colour	PK	Cat. No.
ml	mm	mm	GL			
250	70	138	45	clear	1	9.071 706
500	86	176	45	clear	1	9.071 707
1000	101	225	45	clear	1	9.971 704
250	70	138	45	amber	1	9.071 701
500	86	176	45	amber	1	9.071 702
1000	101	225	45	amber	1	9.971 703



### 1 Laboratory bottles, Premium, DURAN®

DURAN® Premium laboratory bottle with DIN thread. Highly leak-tight using Premium screw cap. Working temperature from -196°C up to 260°C. With PTFE coated silicone seal and pouring ring. With additional reverse scale, accuracy ±5%. Thermal shock resistance of 160K (tested by the German TÜV and with GS mark). Bottle and screw cap in accordance to USP/EP guidelines (Glass Type I/Neutral glass, screw cap raw material USP Class VI, seal FDA). Screw cap material is similar to PFA and highly resistant against chemicals. The material is free from colourants and therefore no leaching takes place. DMF available upon request. Premium bottle and screw cap fulfil highest requirements of the pharmaceutical, chemical and food industry. With Retrace code (Batch identification). Certificate available via the Internet (available for cap and bottle).

DURAN Group



Capacity	Ext. diam.	Height*	Neck thread	PK	Cat. No.
ml	mm		GL		
100	56	105	45	1	9.072 155
250	70	143	45	1	9.072 156
500	86	181	45	1	9.072 157
1000	101	230	45	1	9.072 158

\*Height mm incl. cap

### 2 Square shape laboratory bottles, DURAN®

Ergonomic handling due to angular shape, highly stable, good stackability - proven DURAN® properties give a space saving of 44% in comparison with standard laboratory bottles (example applies to 100ml bottles)

DURAN Group

With pouring ring and PP screw cap. Temperature (max.): +140°C

Advantages:

- proven DURAN® properties
- excellent chemical resistance
- low coefficient of expansion
- can be sterilised to 140°C. Before autoclaving, unscrew closure and set lightly on the container. Do not screw the closure down.
- freezer limit: -40°C. Only freeze the bottle by laying at an angle and if max. ¾ full.
- ergonomic handling
- very stable
- with Retrace code (Batch identification). Certificate available via the Internet.
- neutral glass/Type I glass acc. to USP/EP and JP.



Capacity	Neck thread	Width	Height*	PK	Cat. No.
ml	GL	mm			
100	32	50	109	1	9.072 076
250	45	64	143	1	9.072 077
500	45	78	181	1	9.072 078
1000	45	94	222	1	9.072 079

\*Height mm incl. cap

### 3 Screw caps, PP

PP. DIN thread. With lip seal. Temperature resistant to 140°C. Only suitable for DURAN® laboratory bottles.

DURAN Group

Neck thread	Colour	PK	Cat. No.
GL			
25	blue	1	9.209 065
32	blue	1	9.209 067
45	blue	1	9.209 069
45	yellow	1	9.072 400
45	green	1	9.072 401
45	grey	1	9.072 402
80	blue	1	9.140 110



### 4 Pouring rings, PP

PP. Autoclavable to 140°C (steam).

DURAN Group

Neck thread	Colour	PK	Cat. No.
GL			
32	blue	1	9.209 081
45	blue	1	9.209 083
45	green	1	9.209 075
45	grey	1	9.209 076
45	yellow	1	9.209 077





### 1 Screw caps, high temperature, PBT

Red. DIN thread. With PTFE-coated silicone seal. Withstands temperatures up to 180°C. Autoclavable.

DURAN Group

Neck thread GL	PK	Cat. No.
14	1	9.209 014
18	1	9.209 018
25	1	9.209 025
32	1	9.209 032
45	1	9.209 045



9.209 440



9.209 086

### Gaskets, silicone/PTFE and pouring rings, ETFE

Pouring rings, ETFE.  
For screw caps made from PBT. Autoclavable.  
Thermal resistance: max. 180°C

DURAN Group

Silicone gasket (VMQ), PTFE coated.  
For screw caps made from PBT. Autoclavable.  
Thermal resistance: max. 130°C (steam), 200°C (heat)

Type	Neck thread GL	Material	PK	Cat. No.
Gasket	14	silicone, PTFE coated	1	9.209 440
Gasket	18	silicone, PTFE coated	1	9.209 441
Gasket	25	silicone, PTFE coated	1	9.209 442
Gasket	32	silicone, PTFE coated	1	9.209 443
Gasket	45	silicone, PTFE coated	1	9.209 444
Pouring ring	32	ETFE	1	9.209 086
Pouring ring	45	ETFE	1	9.209 088



### 4 Premium screw cap, TpCh260

TpCh260 (similar to PFA), with PTFE coated silicone seal. Colourless (to avoid risk of leaching) and temperature resistant from -196°C to +260°C. Ideal for dry sterilization. USP/FDA standard conformity. DFM available on request. With Retrace code (Batch Identification). Certificate available via the internet.

DURAN Group

Neck thread GL	Dia. mm	Height mm	PK	Cat. No.
45	51	26	1	6.205 218



### 5 Premium pouring ring for Premium screw cap, TpCh260

Colourless pouring ring TpCh260, height 4mm. Temperature resistant from -196°C to +260°C.

DURAN Group

Neck thread GL	PK	Cat. No.
45	1	6.803 677



### 6 Membrane Cap, PP/ PTFE

Cap from PP, membrane from PTFE. Ideal for autoclaving processes because the membrane permits pressure equalisation and tight sealing, reducing the risk of contamination. Temperature resistant up to 140°C. Typical applications: storage or transport of gas generating media, autoclaving of media.

DURAN Group

Neck thread GL	PK	Cat. No.
25	1	9.284 567
32	1	9.284 568
45	1	9.209 068
80	1	9.284 531

### 1 Screw caps, High Temperature (HT), PPS

With PTFE/silicone seal made of PPS (polyphenylene sulphide). With PTFE/silicone seals having a particularly high level of mechanical resistance, even in temperatures up to +250°C. The non-slip, knurled outer surface ensures the screw cap can be closed securely and opened easily. The closure incorporates a PTFE-faced silicone seal wad and the substance in the container only comes in contact with PTFE. The silicone wad levels out any unevenness in the container neck. BOLA



For thread size	PK	Cat. No.
GL		
14	1	9.209 070
18	1	9.209 071
25	1	9.209 072
32	1	9.209 073
45	1	9.209 074

### 2 Screw cap, GL45, with 2 hose connections, PP

**NEW!**

This new hose connection system has been specially developed for the connection of soft elastic tubing which, for example, is used in biotechnology for transferring media with the aid of peristaltic pumps. DURAN Group

The curved hose connections prevent kinking of the tubing. The grey PP core moves freely and allows the vessel to be changed without twisting the securely attached tubing.

Properties/application:

- safe, sterile transfer of liquid media within a closed system
- highly versatile because the screw cap is based on the standard GL45 thread
- ideal for use with elastic, soft tubing of 6 - 9mm i.d. (Viton®, Tygon®, silicone)
- 2 x polypropylene, curved, hose connections on top and straight connections below
- optional filter top part for sterile pressure equalisation available
- temperature resistant up to +140°C
- autoclavable/dishwasher-proof



Description	PK	Cat. No.
Screw cap, with 2 hose connections	1	6.240 019
Filter top part	1	9.071 692

### 3 Wide mouth bottles with GLS 80 neck, DURAN®, clear

**NEW!**

Laboratory bottle with GLS80 wide neck (80mm diameter). Neutral/Type 1 glass acc. to USP/EP. With PP screw cap and pouring ring. Autoclavable and temperature resistant up to 140°C. With improved quick release cap which allows the bottle to be easily opened and closed with a minimum of turns. The wide neck is ideal for any application with powders or granulates, giving easier filling and emptying. Special thread means opening takes less than a turn. With Retrace code (Batch identification). Certificate available via the Internet. DURAN Group

Capacity ml	Dia. mm	Height mm	PK	Cat. No.
500	101	148	1	9.284 510
1000	101	218	1	9.284 511
2000	136	248	1	9.284 512
3500	160	275	1	9.071 966
5000	182	311	1	9.284 513
10000	227	395	1	9.284 514
20000	288	483	1	9.284 515



### 4 Wide mouth bottles GLS 80, DURAN® amber glass

**NEW!**

Temperature-resistant, bottle can be used up to 500°C (for short periods), screw cap and pouring ring up to +140°C. Protects light-sensitive media from light wavelengths between 300nm to 500nm. Unaffected DURAN® properties within the bottle, as colour is only applied on the outer surface. Very uniform, durable and chemically resistant amber colour due to innovative technology. With 80mm wide mouth screw thread. Ideal for applications with powders and granules, easy filling and emptying. Neutral glass/Type I glass acc. to USP/EP and JP. With Retrace Code (Batch Identification). Certificate available via the Internet. Autoclavable.

Capacity ml	Dia. mm	Height without closure mm	PK	Cat. No.
500	101	148.0	1	9.284 516
1000	101	218.0	1	9.284 517
2000	136	248.0	1	9.284 518
3500	160	275.0	1	9.071 968
5000	182	311.0	1	9.284 519
10000	227	385.0	1	9.284 520
20000	288	480.0	1	9.284 521





### 1 Wide mouth bottles GLS 80 protect, DURAN®

**NEW!**

DURAN Group

Laboratory bottle with batch identification (Retrace Code), certificate available via the internet, with GLS80 wide neck (o.d. 80mm). Glass Type I/neutral glass as per USP, EP and JP. Autoclavable. Ideal for any application with powder or granulate, easier filling and emptying. The coating of DURAN® protect is a resistant and transparent plastic coating based on a cross-linked copolymer. Complete with blue quick release closure (PP, integral lip seal) and pouring ring (PP) for drip-free pouring and clean, safe working.

The coating adheres to the surface of the glass and fulfils the following functions:

- protection of the glass surface against mechanical damage (e.g. scratches)
- keeps broken glass in place after breakage and avoids or reduces leakage
- minimises loss of media in case of breakage
- absorption of light up to a wavelength of 380nm

Temperature resistance:

- autoclavable (< 135°C)
- can be used in microwaves
- high temperature applications for extended periods (>30min) and direct heating with a flame not recommended
- freezing down to -30°C possible

Temperature (max.): 135°C

Capacity ml	Dia. mm	Height mm	PK	Cat. No.
500	101	148	1	9.284 522
1000	101	218	1	9.284 523
2000	136	248	1	9.284 524
3500	160	271	1	9.071 969
5000	182	311	1	9.284 525



### 2 Accessories for Wide mouth bottles GLS 80, PP

Temperature resistant up to 140°C. Autoclavable.

DURAN Group

Description	Dia. mm	Height mm	PK	Cat. No.
Screw cap	86	40	1	9.140 110
Pouring ring, blue	77	7	1	9.284 530
Membrane cap	86	40	1	9.284 531



### 3 Connection system for wide-mouth bottles GLS 80

Materials used PP, PBT and PTFE. Flexible modular system. Five different hose diameters (3.2mm, 6.0mm, 8.0mm, 10.0mm and 12.0mm) can be connected.

DURAN Group

Sterile pressure equalisation is possible through use of membrane filter. Unused ports can be provided with a blind cap. Typical applications: safe transfer of liquid media within a closed and sterile system (evaporation is reduced). Autoclavable - maximum temperature 140°C.

Description	Neck thread GL	PK	Cat. No.
4-port cap GL 18, diam. 86mm, height approx. 60mm	80	1	9.284 532
Insert for screw cap, inner diam. 3.2mm	18	1	9.284 533
Insert for screw cap, inner diam. 6.0mm	18	1	9.284 534
Insert for screw cap, inner diam. 8.0mm	18	1	9.284 535
Insert for screw cap, inner diam. 10.0mm	18	1	9.284 536
Insert for screw cap, inner diam. 12.0mm	18	1	9.284 537
Screw cap for tube connection, blue	18	1	9.284 538
Pressure equilization for 4-port	18	1	9.284 539
Screw cap, red	18	1	9.284 540



### 1 GLS 80 Stirred Reactor

DURAN Group

The GLS 80 stirred reactor is suitable for a wide range of laboratory mixing processes. The screwthread connections (2 x GL14, 2 x GL18) provided allow addition or removal of media from the bottle during the mixing process. The whole assembly can be autoclaved and is therefore suitable for use in fermentation and culture. By using components from the GLS 80 connection system, an additional media bottle (Tubing o.d.: 1.6 to 12.0mm) can be connected or a sterile pressure equalizer attached. Drive for the stirrer is provided by a standard, commercial, magnetic stirrer. The variable length stirrer shaft can be used in DURAN® GLS 80 laboratory glass bottles (1000 and 2000ml) and provides notably improved mixing in comparison with standard magnetic stirrer bars. The paddle is exchangeable and can be used up to 500 rpm. Typical applications: mixing of liquids, dissolving of solids, simple fermentation.

**Supplied with:** GL 80 stirred reactor with anchor stirrer, magnetic, incl. 1000 or 2000 ml DURAN® GLS 80 bottle , GL14 screw cap (PP, blue), 2 x GL14 a. 2 x GL18 screw cap (PBT red).



Description	PK	Cat. No.
incl. shaft, connection and screw cap	1	9.197 379
incl. bottle 1L	1	9.197 380
incl. bottle 2L	1	9.197 381

### 2 Accessories for agitation reactor GLS 80

DURAN Group

Type	Description	PK	Cat. No.
Stirrer	impeller type	1	9.197 382
Stirrer	anchor type	1	9.197 383
Spare screw cap	PP blue/grey	1	9.197 385
Spare shaft	stainless steel, incl. PEEK connection	1	9.197 386



### 3 GL45 Stirred Reactor

**NEW!**

DURAN Group

The perfect support for your mixing processes

Properties:

- driven using standard magnetic stirrers
- variable stirrer shaft, can be used for 500ml and 1000ml DURAN® GL 45 laboratory bottles
- can be used up to 500rpm
- entirely autoclavable
- temperature resistant up to 140°C
- compatible with proven DURAN® connection systems; can fit tubing from 1.6mm to 6.0mm i.d.
- significantly improved, thorough mixing compared to standard magnetic stirring bar
- materials used PP/PTFE/PEEK/stainless steel
- parts in contact with media fully conform to FDA requirements
- bottle supplied (500ml or 1000ml)

Application:

The above mentioned properties make the DURAN® stirred reactor ideal for the widest possible range of mixing processes in laboratories, e.g. mixing liquids or dissolving solids. The connections available allow introduction of media into the bottle or removal during mixing.

The whole assembly is autoclavable, so that it can be used in biological applications, for example simple fermentation processes. With the aid of components from the DURAN® connection system extra media bottles can be attached, or a sterile pressure release fitted.

Items supplied:

GL45 stirred reactor, incl. 500ml or 1000ml DURAN® GL45 bottle, folding magnetic stirrer and GL45 PP cap with 2 x GL14 ports, 2 x GL14 PBT caps red



Description	PK	Cat. No.
GL45 stirred reactor, incl. 500ml DURAN® GL45 bottle	1	9.197 395
GL45 stirred reactor, incl. 1000ml DURAN® GL45 bottle	1	9.197 396
Folding magnetic stirrer for GL45 stirred reactor, incl. shaft	1	9.197 391
Spare screw cap 2-ports for GL45 stirred reactor (excl. stirrer)	1	9.197 393



# 1. Lab consumables

## Vessels/Wide mouth bottles



### 1 Wide-mouth reagent bottles with stopper, soda-lime glass

Soda-lime glass. To ISO 4796-2. Standard ground joint neck. With glass stopper. Hydrolytic class 3.

DURAN Group

Capacity	Dia.	Height	Neck	Colour	PK	Cat. No.
ml	mm	mm	NS			
50	44	78	24/20	clear	1	9.071 405
100	54	100	29/22	clear	1	9.071 408
250	72	130	34/24	clear	1	9.071 414
500	89	165	45/27	clear	1	9.071 419
1000	110	200	60/46	clear	1	9.071 424
50	44	78	24/20	amber	1	9.071 505
100	54	100	29/22	amber	1	9.071 508
250	72	130	34/24	amber	1	9.071 514
500	89	165	45/27	amber	1	9.071 519
1000	110	200	60/46	amber	1	9.071 524



### 2 Wide mouth reagent bottles with stopper, DURAN®

DURAN®. ISO 4796-2. With standard ground joint as outlined below. With glass stoppers. Glass Type I/neutral glass as per USP, EP and JP. With Retrace Code (Batch Identification). Certificate available via the Internet. Autoclavable.

DURAN Group

Capacity	Dia.	Height	Neck	Colour	PK	Cat. No.
ml	mm	mm	NS			
50	44	79	24/20	clear	1	9.071 817
100	52	97	29/22	clear	1	9.071 824
250	70	133	34/35	clear	1	9.071 836
500	86	163	45/40	clear	1	9.071 844
1000	107	201	60/46	clear	1	9.071 854
2000	133	247	60/46	clear	1	9.071 863
50	44	79	24/20	amber	1	9.071 917
100	52	97	29/22	amber	1	9.071 924
250	70	133	34/35	amber	1	9.071 936
500	86	163	45/40	amber	1	9.071 944
1000	107	201	60/46	amber	1	9.071 954
2000	133	247	60/46	amber	1	9.071 963



### 3 Reagent bottles, wide-mouth, PP

Transparent, with PP screw cap.  
 - autoclavable (121°C, (2bar) acc DIN EN 285)  
 - can be sterilised with formalin and ethanol  
 - sterilisable by  $\beta$ -radiation (25kGy)  
 - suitable for use in the microwave

**NEW!**

VITLAB

Capacity	Ext. diam.	Neck thread	Height	PK	Cat. No.
ml	mm	GL	mm		
250	132	45	73	1	7.055 116
500	172	45	87	1	7.072 173
1000	197	45	105	1	9.073 171
2000	241	45	131	1	9.073 172
5000	315	45	178	1	9.073 170

### 1 Reagent bottles, PP, opaque

**NEW!**

Opaque, pigmented polypropylene, for storage of light sensitive substances. With PP stopper.  
In accordance to DIN 12039.

VITLAB

Capacity	Neck	Height	Ext. diam.	PK	Cat. No.
ml	NS	mm	mm		
500	45/40	183	87	1	9.073 227
1000	60/46	214	108	1	9.073 228
2000	60/46	263	131	1	9.073 229

### 2 Wide-mouth bottles, soda-lime glass

**NEW!**

Clear or amber glass. Round thread neck in accordance with DIN 168.

**Please order screw caps separately.**

Capacity	Neck thread	Dia.	Height	Colour	PK	Cat. No.
ml	GL	mm	mm			
30	32	36.0	68.0	clear	1	9.072 203
50	32	44.0	75.0	clear	1	9.072 205
100	40	50.0	93.0	clear	1	9.072 208
125	40	54.0	98.0	clear	1	9.072 209
150	45	57.0	104.0	clear	1	7.060 572
250	55	70.0	113.0	clear	1	9.072 214
500	55	84.0	154.0	clear	1	9.072 219
1000	68	103.5	180.5	clear	1	9.072 224
30	32	36.0	68.0	amber	1	9.072 303
50	32	44.0	75.0	amber	1	9.072 305
100	40	50.0	93.0	amber	1	9.072 308
125	40	54.0	98.0	amber	1	9.072 309
250	55	70.0	113.0	amber	1	9.072 314
500	55	84.0	154.0	amber	1	9.072 319
1000	68	103.5	180.5	amber	1	9.072 324



### 3 Screw caps for wide-mouth bottles, PP/PE-LD

Cap PP, seal PE-LD  
For bottles 9.072 203 to 9.072 324 series.



Neck thread	Material	PK	Cat. No.
GL			
32	PP	1	9.072 164
40	PP	1	9.072 165
55	PP	1	9.072 166
68	PP	1	9.072 167

# 1. Lab consumables

## Vessels/Wide mouth bottles



### 1 2 Wide-mouth bottles behrotest®, clear and amber glass, PTFE-lined screw caps

Clear and amber glass. For storage and transport.  
The PTFE-lined screw caps make them ideal for taking samples.

Behr

Type RK = clear glass  
Type RB = amber glass

Type	Capacity ml	Thread dia. mm	PK	Cat. No.
RB 250 GT	250	55	1	9.072 325
RB 500 GT	500	55	1	9.072 326
RB 1000 GT	1000	68	1	9.072 327
RK 250 GT	250	55	1	9.103 200
RK 500 GT	500	55	1	9.103 201
RK 1000 GT	1000	68	1	9.103 202



### 3 LLG-Wide neck bottles with screw cap, PE-LD NEW!

Transparent, with cap.

Capacity ml	Dia. mm	Height mm	Thread external dia. mm	PK	Cat. No.
50	39.0	77.0	32	50	9.073 510
100	47.0	94.0	32	20	9.073 511
250	63.0	119.0	40	10	9.073 512
500	78.0	152.0	50	10	9.073 513
1000	96.0	206.0	65	4	9.073 514
1500	109.0	226.0	65	4	9.073 515
2000	120.0	247.0	65	1	9.073 516



### 4 Wide mouth bottles, series 303, PE-LD

Natural, translucent. Thick-walled. Ideal for taking, storing and transporting samples of liquids, pastes and granulated products.

Kautex

**Please order closure separately.**

Capacity ml	Dia. mm	Height mm	Thread external dia. mm	PK	Cat. No.
50	39.0	76.0	32	1	9.072 981
100	48.0	93.5	32	1	9.072 982
200	59.0	114.0	40	1	9.072 983
250	64.0	120.0	40	1	9.072 984
300	67.5	128.0	40	1	9.072 985
500	77.0	154.0	50	1	9.072 986
750	88.0	173.0	50	1	9.072 987
1000	95.0	205.0	65	1	9.072 988
1500	108.0	226.0	65	1	9.072 989
2000	120.0	247.0	65	1	9.072 990

Height in mm without cap.



### 5 Caps for wide mouth bottles, series 303, PE-LD

For 9.072 981 to 9.072 990 series bottles.

Kautex

For Thread o.d. mm	For bottles ml	PK	Cat. No.
32	50, 100	1	9.072 778
40	200, 250, 300	1	9.072 779
50	500, 750	1	9.072 781
65	1000, 1500, 2000	1	9.072 782

# 1. Lab consumables

## Vessels/Wide mouth bottles

### 1 Wide mouth bottle mit screw cap Economy Type 2189, PE-HD/PP NEW!

With PP screw cap. Economical, break-resistant bottle. Guaranteed leakproof for safe sampling, shipping and storage. Translucent bottle allows viewing of liquid level. EPA-specified sample bottle material for a wide variety of inorganic compound and elemental analyses.

Nalgene



Type	Capacity ml	Cover type mm	PK	Cat. No.
2189	30	28	1	7.048 087
2189	60	28	1	7.048 088
2189	125	38	1	7.048 089
2189	250	43	1	7.048 090
2189	500	53	1	7.048 091
2189	1000	63	1	7.048 092

### 2 Wide mouth bottle with screw cap Economy Type DS2185, PE-HD/PP, brown NEW!

With amber PP screw cap. Protects light sensitive samples from UV/VIS light transmission during sampling, shipping or storage. Wide mouth allows easy retrieval of grab samples and reduces turbulence when filling. Single-use sample bottle. Leakproof.

Nalgene



Type	Capacity ml	Cover type mm	PK	Cat. No.
DS2185	30	28	1	7.049 885
DS2185	60	28	1	7.049 886
DS2185	125	38	1	7.049 887
DS2185	250	43	1	7.049 888
DS2185	500	53	1	7.049 889
DS2185	1000	63	1	7.049 890

### 3 Graduated wide mouth bottles, PE

Polyethylene (body) and Polypropylene (cap). Will withstand considerable pressure before rupturing. Secured by tagging points on bottle and cap. Confidential notes can be placed in the space between insert sealing plug and cap.



Capacity ml	Grad. ml	Ext. diam. mm	Int. dia. mm	Height mm	PK	Cat. No.
50	10	40	24.00	77	1	9.072 950
100	20	48	24.00	89	1	9.072 951
250	25	61	34.50	126	1	9.072 952
500	50	75	34.50	158	1	9.072 953
1000	100	93	45.00	200	1	9.072 954
2000	100	115	45.00	247	1	9.072 955



# 1. Lab consumables

## Vessels/Wide mouth bottles



### 1 Square bottles, wide mouth

Bottles, PE with PP cap, graduated. Space saving bottles, ideal for long term storage of samples. Approximate graduations allow reproducible filling without the use of cylinders/beakers. Easy grip caps can be wired down for security. Head space between cap and insert plug can be used for confidential notes.

Capacity	Grad.	Width	Length	Height	Tubing i.d.	PK	Cat. No.
ml	ml	mm	mm	mm	mm		
25	5	32	34	52	18.0	1	9.072 943
50	10	38	38	70	24.0	1	9.072 944
100	20	42	48	90	34.5	1	9.072 945
250	50	57	59	110	34.5	1	9.072 946
500	100	70	80	138	45.0	1	9.072 947
1000	100	80	103	176	58.0	1	9.072 948
2000	100	100	134	210	58.0	1	9.072 949



### 2 Security seals for wide mouth bottles

Security seals are used to ensure the safety locking and preserving of the product inside the bottles. 4 different attractive colours are available which have unique identification numbers printed on the seal plate.

**NEW!**

Isolab

Description	Colour	PK	Cat. No.
Security seal	blue	10	9.073 295
Security seal	red	10	9.073 296
Security seal	yellow	10	9.073 297
Security seal	green	10	9.073 298



### 3 security seal cutter

Type	PK	Cat. No.
security seal cutter	1	4.008 511

**NEW!**



### 4 Fluorinated Wide-Mouth Bottles Type 2197, PE-HD

With fluorinated PP screw cap. Safe, durable, cost-efficient line of fluorinated wide-mouth bottles. Fluorinated surface provides improved barrier properties and reduces solvent absorption and permeation. Fluorination enhances long-term container performance, prevents material loss due to permeation and yields lower extractables. Widemouth design allows for easy filling and dispensing of solid and liquid materials. Split- and puncture-resistant. Recyclable. Leakproof.

**NEW!**

Nalgene

Type	Capacity ml	Cover type mm	PK	Cat. No.
2197	125	38	1	7.048 097
2197	250	43	1	7.048 098
2197	500	53	1	7.048 099
2197	1000	63	1	7.048 100



### 5 Wide-mouth bottle Economy Type 2187, POCO

General-purpose, single-use sample bottle, with PP screw cap. Leakproof. Autoclavable.

**NEW!**

Nalgene

Type	Capacity ml	Cover type mm	PK	Cat. No.
2187	30	28	1	9.103 045
2187	60	28	1	9.103 046
2187	125	38	1	9.103 047
2187	250	43	1	9.103 048
2187	500	53	1	9.103 049
2187	1000	63	1	9.103 050

# 1. Lab consumables

## Vessels/Wide mouth bottles

### 1 Graduated wide mouth bottles

PP, meeting Food and Drug regulations with pictograms.  
 Very sturdy, rupture-proof bottles.  
 Wide mouth for easy filling and emptying of liquid or powder samples.  
 Conforms to DIN 13316 and 168. With PP closure. Deep seals ensure leakproof closure. Autoclavable.

Kartell



Capacity	Grad.	Ext. diam.	Height	Tubing i.d.	DIN	PK	Cat. No.
ml	ml	mm	mm	mm			
50	10	38	88	24.0	32	1	9.073 030
100	20	48	105	24.0	32	1	9.073 031
250	25	60	140	38.0	45	1	9.073 032
500	100	75	170	38.0	45	1	9.073 033
1000	100	95	206	55.0	63	1	9.073 034
2000	100	120	252	55.0	63	1	9.073 035

### 2 Wide-Mouth Bottles Type 2104, PE-HD with screw cap, PP



Durable, general-purpose bottles with countless applications in the lab or field.  
 Translucent, more rigid than PE-LD. Wide mouth is easy to fill with dry materials or liquids.  
 Excellent chemical resistance to most acids, bases and alcohols. Can be used in freezer - use to -100°C.  
 Suitable for shipping liquids. Leakproof with PP screw cap.

Nalgene



Type	Capacity	Cover type	PK	Cat. No.
	ml	mm		
2104	30	28	1	9.103 061
2104	60	28	1	9.103 062
2104	125	38	1	9.103 063
2104	250	43	1	9.103 064
2104	500	53	1	9.103 065
2104	1000	63	1	9.103 066
2104	1500	63	1	6.205 825

### 3 Wide-Mouth Bottles Type 2105 with screw cap, PP

Transparent. Rigid wall. For general laboratory use. Withstands temperatures up to +121°C.  
 Autoclavable - cap should be unscrewed before autoclaving.

Nalgene



Type	Capacity	Cover type	PK	Cat. No.
	ml	mm		
2105	30	28	1	9.103 051
2105	60	28	1	9.103 052
2105	125	38	1	9.103 053
2105	250	43	1	9.103 054
2105	500	53	1	9.103 055
2105	1000	63	1	9.103 056

### 4 Wide-Mouth Bottles Typ 2100, 2101, FEP with screw cap ETFE



Highest temperature, chemical and corrosion resistance. Easy handling through wide neck. Leakproof with ETFE screw cap. Especially suitable for trace element analysis and applications with organic solvents. Bottles and caps are temperature resistant from -105 to +150°C.  
 Individually packed. Autoclavable.

Nalgene



Type	Capacity	Cover type	PK	Cat. No.
	ml	mm		
2100	125	38	1	9.103 041
2100	250	43	1	9.103 042
2100	500	48	1	9.103 043
2100	1000	53	1	9.103 044
2101	2200	100*	1	7.047 986

\* white polypropylene screw cap with PTFE liner.



### 1 Wide neck bottles, series 303, PE-LD

Brown, offers protection against UV rays for light sensitive liquids. These wide neck bottles are easy to fill and clean. Leakproof.

Kautex

**Please order closure separately.**

Capacity	Thread external dia.	Height	PK	Cat. No.
ml	mm	mm		
50	32	76.0	1	9.073 681
100	32	93.5	1	9.073 682
250	40	120.0	1	9.073 684
500	50	154.0	1	9.073 686
1000	65	205.0	1	9.073 688

Height in mm without closure.



### 2 Caps, series 303, PE-LD

Brown, screw caps.

Kautex

For Thread o.d. mm	For bottles ml	PK	Cat. No.
32	50, 100	1	9.073 778
40	250	1	9.073 779
50	500	1	9.073 781
65	1000	1	9.073 782



### 3 Wide-Mouth Bottles Type 2106, PE-HD mit screw cap, PP

**NEW!**

With PP screw cap. Helps protect light-sensitive materials during shipping or storage. Bottles comply with U.S. Pharmacopoeia 23 requirements for maximum light transmission. Easy-to-fill wide mouth. Excellent chemical resistance to most acids, bases and alcohols. Good for freezer storage to -100°C. Leakproof.

Nalgene

Type	Capacity ml	Cover type mm	PK	Cat. No.
2106	30	28	1	7.048 005
2106	60	28	1	7.048 006
2106	125	38	1	7.048 007
2106	250	43	1	7.048 008
2106	500	53	1	7.048 009
2106	1000	63	1	7.048 010



### 4 Heavy-Duty Vacuum Bottles Type 2126, PP with screw cap PP/TPE

**NEW!**

With white PP screw cap and TPE gaskets. Most durable Nalgene-bottle. Large, thick-walled bottle with wide mouth for extra-rugged service. Withstand application of full vacuum for 24 hours at 20°C. Leakproof. Autoclavable.

Nalgene

Type	Capacity ml	Cover type mm	PK	Cat. No.
2126	1000	53B	1	7.048 062
2126	2000	53B	1	7.048 063
2126	4000	83B	1	7.048 064
2126	5000	83B	1	7.048 065



### 5 Medium neck bottles, series 307, PE-HD with screw cap, PP

With graduations. Leakproof screw cap. Multi-purpose bottles for universal use in the laboratory and in industry. Offers a good level of chemical resistance. Generous neck diameters offer easy filling and cleaning. Ideal for pastes, granulates and withstands heat filling.

Kautex

Capacity	Thread external dia.	Height	PK	Cat. No.
ml	mm	mm		
100	25	99.5	1	9.073 344
250	28	129.5	1	9.073 345
500	40	161.0	1	9.073 346
1000	50	203.0	1	9.073 347

Height in mm without closure.

### 1 Spare screw caps for series 307 medium neck bottles, PP

Natural, spare screw caps. Kautex

For Thread o.d. mm	For bottles ml	PK	Cat. No.
25	100	1	9.073 348
28	250	1	9.073 349
40	500	1	9.072 971
50	1000	1	9.072 972



### 2 Wide mouth bottles, series 303, PP

Round, Natural without closure. With approximate graduations. Ideal for liquids, pastes and granulates. For taking samples, sending specimens and as transport containers. Can be filled with hot substances. Autoclavable to max. 121°C. **Please order closure separately.** Kautex

**Note:** Before autoclaving, unscrew closure and set lightly upside down on the container. Do not screw the closure down.

Capacity ml	Dia. mm	Thread external dia. mm	Height without closure mm	PK	Cat. No.
100	48.5	32	94.0	1	9.072 965
250	64.5	40	121.0	1	9.072 966
500	77.5	50	155.0	1	9.072 967
1000	96.0	65	205.0	1	9.072 968



### 3 Screw caps for wide mouth bottles, series 303, PP

Natural. Kautex

For Thread o.d. mm	For bottles ml	PK	Cat. No.
32	100	1	9.072 970
40	250	1	9.072 971
50	500	1	9.072 972
65	1000	1	9.072 973



### 4 Wide mouth containers, PET

Transparent with white polypropylene cap. Round, except 2000ml which is square. Behr

Capacity ml	Cap dia. mm	Ext. diam. mm	Height mm	PK	Cat. No.
100	70	74	37	10	9.103 136
250	70	85	75	10	9.103 137
500	82	88	107	10	9.103 138
2000	100	133	180	10	9.103 140
2500	100	135	210	10	9.103 148
3000	100	145	210	10	9.103 149



### 5 Wide mouth containers, series 310, PETG

Square, without closure. Crystal clear, ideal for presenting products in their true colours. The wide mouth enables easy filling and cleaning. **Please order closures separately.** Kautex

Capacity ml	Thread external dia. mm	Height mm	PK	Cat. No.
50	32	60.5	1	9.073 395
100	40	71.0	1	9.073 396
200	50	88.0	1	9.073 397
500	65	108.0	1	9.073 398
1000	80	143.0	1	9.073 399
2000	80	187.0	1	9.073 400

Height in mm without closure.





# 1. Lab consumables

## Vessels/Wide mouth bottles



### 1 Wide mouth containers, series 310, PVC

Square, Transparent. Clear, for good product presentation. Amber, for light sensitive contents. The wide mouth allows for easy filling and cleaning. Black PP, tamper-evident leakproof closure.

Kautex

**Please order closures separately.**

Capacity	Colour	Thread external dia.	Height	PK	Cat. No.
ml		mm	mm		
100	Transparent	40	83.5	1	9.074 051
200	Transparent	50	98.5	1	9.074 052
300	Transparent	50	105.5	1	9.074 053
500	Transparent	65	118.5	1	9.074 054
100	Amber	40	83.5	1	9.074 061
200	Amber	50	98.5	1	9.074 062
300	Amber	50	105.5	1	9.074 063
500	Amber	65	118.5	1	9.074 064

Height in mm without closure.



### 2 Square, wide mouth containers, series 310, PVC

Rigid, Amber or Clear PVC containers with black PP screw cap and leakproof PE foamliner.

Kautex

Universal container for storage, sample dispatch and transport.

The clear version is ideal for colour-fast product presentation.

The amber version is suitable for light sensitive products.

**Please order screw caps separately.**

Capacity	Width	Depth	Height without closure	Thread external dia.	Colour	PK	Cat. No.
ml	mm	mm	mm	mm			
50	38.0	38.0	57.0	32	clear	1	9.073 050
100	46.0	46.0	71.0	40	clear	1	9.073 051
200	59.5	59.5	87.0	50	clear	1	9.073 052
300	67.5	67.5	94.0	50	clear	1	9.073 053
500	80.5	80.5	108.0	65	clear	1	9.073 054
750	91.5	91.5	120.0	80	clear	1	9.073 055
1000	97.5	97.5	143.0	80	clear	1	9.073 056
2000	122.0	122.0	187.0	80	clear	1	9.073 057
50	38.0	38.0	54.0	32	amber	1	9.073 060
100	46.0	46.0	71.0	40	amber	1	9.073 061
200	59.5	59.5	87.0	50	amber	1	9.073 062
300	67.5	67.5	94.0	50	amber	1	9.073 063
500	80.5	80.5	108.0	65	amber	1	9.073 064
750	91.5	91.5	120.0	80	amber	1	9.073 065
1000	97.5	97.5	143.0	80	amber	1	9.073 066
2000	122.0	122.0	187.0	80	amber	1	9.073 067



### 3 Wide mouth bottles, series 310, PE-HD

Square, Natural, without closure. Wide mouth, therefore easy to fill and empty, leakproof. Easy to clean. Square shape makes the best use of space.

Kautex

Ribbed sides for a secure hold. With space for a label.

**Please order closure separately.**

Capacity	Thread external dia.	Width	Depth	Height	PK	Cat. No.
ml	mm	mm	mm	mm		
250	40	59.0	59.0	110.5	1	9.073 385
500	40	69.0	69.0	145.5	1	9.073 386
1000	50	86.5	86.5	178.5	1	9.073 387

Height in mm without closure.

**1 Caps for series 310 PETG and PVC**

Black screw caps, suitable for wide mouth containers made of PVC (clear or amber) and PETG.

*Kautex*

For Thread o.d. mm	For bottle ml	PK	Cat. No.
32	50	1	9.073 070
40	100	1	9.073 071
50	200 and 300	1	9.073 072
65	500	1	9.073 073
80	750 and 1000	1	9.073 074
80	2000	1	9.073 075



**2 Tamper-evident caps for series 310, PP/PTFE**

White with PTFE foam liner.

**NEW!**

*Kautex*

Neck thread GL	For bottle ml	PK	Cat. No.
32	100 to 250	1	9.073 480
45	500 to 1000	1	9.073 481



**3 Tamper-evident caps vor series 310, PP/PE**

Suitable for series 310 PVC wide mouth containers (transparent and amber). Tamper-evident black PP cap with PE foam liner and tamper-evident ring which immediately indicates unauthorised opening. Perfect for determining whether the cap has been removed.

*Kautex*

For Thread o.d. mm	For jars ml	PK	Cat. No.
40	100	1	9.074 071
50	200 and 300	1	9.074 072
65	500	1	9.074 073



**4 Caps for series 310, PE-LD**

Natural, screw cap for 9.073 385 to 9.073 387.

*Kautex*

For Thread o.d. mm	For bottles ml	PK	Cat. No.
40	250, 500	1	9.072 779
50	1000	1	9.072 781



We can supply this  
manufacturer's  
whole  
product range !



# 1. Lab consumables

## Vessels/Wide mouth bottles

### 1 2 Square reagent bottles, PE-HD

Natural or white. Wide neck.

Kautex

Please order closure separately.

Capacity	Colour	Width	Depth	Height	Thread	PK	Cat. No.
ml		mm	mm	without closure	external dia.		
				mm	mm		
50	natural	36	36	88.5	28	1	9.072 869
100	natural	45	45	101.0	32	1	9.072 870
250	natural	59	59	128.0	45	1	9.072 871
350	natural	60	60	164.0	45	1	9.072 877
500	natural	75	75	161.0	54	1	9.072 872
750	natural	83	83	185.0	54	1	9.072 878
1000	natural	85	85	212.0	54	1	9.072 873
1500	natural	108	108	209.0	80	1	9.072 874
2500	natural	122	122	258.0	80	1	9.072 875
4000	natural	142	142	294.0	80	1	9.072 876
50	white	36	36	88.5	28	1	9.072 879
100	white	45	45	101.0	32	1	9.072 880
250	white	59	59	128.0	45	1	9.072 881
500	white	75	75	161.0	54	1	9.072 882
750	white	83	83	185.0	54	1	9.072 883
1000	white	85	85	212.0	54	1	9.072 884
1500	white	108	108	209.0	80	1	9.072 885
2500	white	122	122	258.0	80	1	9.072 886
4000	white	142	142	294.0	80	1	9.072 887



### 3 Caps for wide neck reagent bottles, PP (melamine\*)

Guarantees the functionality and the tightness of the bottle to protect the contents.

Kautex

**Type a) Screw cap, black** with 1.5mm PE foam lining. Ensures that the bottle is tightly and safely sealed.

**Type b) Tamper-evident cap, blue**, with conical seal and tamper-evident ring. Immediately indicates unauthorised opening. Perfect for determining whether the cap has been removed.

**Type c) Tamper-evident cap, red**, with PE foam lining and tamper-evident ring. Immediately indicates unauthorised opening. Perfect for determining whether the cap has been removed.

Type	Colour	For bottles	Thread external dia.	PK	Cat. No.
		ml	mm		
Type a*	black	50	28	1	9.072 894
Type a	black	100	32	1	9.072 895
Type a	black	250, 350	45	1	9.072 896
Type a	black	500, 750, 1000	54	1	9.072 897
Type a	black	1500 - 4000	80	1	9.072 898
Type b	blue	50	28	1	9.072 904
Type b	blue	100	32	1	9.072 092
Type b	blue	250, 350	45	1	9.072 093
Type b	blue	500, 750, 1000	54	1	9.072 094
Type b	blue	1500 - 4000	80	1	9.072 893
Type c	red	50	28	1	9.072 899
Type c	red	100	32	1	9.072 900
Type c	red	250, 350	45	1	9.072 901
Type c	red	500, 750, 1000	54	1	9.072 902
Type c	red	1500 - 4000	80	1	9.072 903

\* melamine.

# 1. Lab consumables

## Vessels/Wide mouth bottles-Narrow mouth bottles

### 1 Wide-Mouth Bottle PassPort IP2 Type 2199, PE-HD NEW!

With PP screw closure. Safe, durable, cost-efficient line of wide-mouth bottles for packaging and transporting hazardous materials. Recommended for customers who are designing, assembling and certifying their own combination packaging. Split and puncture resistant. Wide mouth allows for easy filling of dry materials or liquids. Heavy duty walls. Molded into bottom: IP2 marking, material, volume, registration notch and the Nalgene® brand name. Evaluated at 15psi (103kPa) per 49 CFR 173.27 (c) (2), ICAO Technical Instructions Part 3-1;1.1.6.1, and IATA Dangerous Goods Regulations Section 5.0.2.9. Leakproof. Nalgene



Type	Capacity ml	PK	Cat. No.
2199	125	1	7.048 101
2199	250	1	7.048 102
2199	500	1	7.048 103
2199	1000	1	7.048 104

### 2 Narrow-mouth packing bottles, soda-lime glass NEW!

Amber, with PP (Pilferproof) 28 neck finish. Watzdorf  
**Please order caps separately.**



Capacity ml	Dia. mm	Height mm	PK	Cat. No.
30	35.0	71.0	143	9.070 200
50	40.5	81.0	84	9.070 201
100	50.5	96.0	72	9.070 202
250	65.0	133.0	36	9.070 203
500	82.0	160.0	16	9.070 205
1000	100.5	207.0	12	9.070 204

### 3 Narrow-mouth bottles, Glass

Amber or Clear, to DIN 5090. Standard packaging bottles. Round thread neck in accordance with DIN 168. **Please order caps separately.**



Capacity ml	Neck thread GL	Dia. mm	Height mm	Colour	PK	Cat. No.
30	18	34.0	74.0	clear	1	9.072 103
50	18	36.5	97.0	clear	1	9.072 105
100	22	45.0	117.0	clear	1	9.072 108
250	22	61.5	148.5	clear	1	9.072 114
500	25	76.0	186.0	clear	1	9.072 119
1000	28	96.5	225.0	clear	1	9.072 124
30	18	34.0	74.0	amber glass	1	9.072 133
50	18	36.5	97.0	amber glass	1	9.072 135
100	22	45.0	117.0	amber glass	1	9.072 138
250	22	61.5	148.5	amber glass	1	9.072 144
500	25	76.0	186.0	amber glass	1	9.072 149
1000	28	96.5	225.0	amber glass	1	9.072 154

### 4 Screw caps for narrow-mouth bottles, PP/PE-LD

PP cap with PE-LD seal. For bottles 9.072 103 to 9.072 154 series.



Neck thread GL	PK	Cat. No.
18	1	9.072 160
22	1	9.072 161
25	1	9.072 162
28	1	9.072 163



# 1. Lab consumables

## Vessels/Narrow mouth bottles

### 1 Narrow-mouth reagent bottles with stopper, soda-lime glass

Amber or Clear. Soda-lime glass. ISO 4796-2. With glass stopper. Hydrolytic class 3. Standard ground joint neck.

DURAN Group

Capacity	Dia.	Height	Neck	Colour	PK	Cat. No.
ml	mm	mm	NS			
100	52	96	14/23	clear	1	9.070 408
250	72	130	19/26	clear	1	9.070 414
500	89	165	24/29	clear	1	9.070 419
1000	110	200	29/32	clear	1	9.070 424
50	42	80	14/15	amber	1	9.070 505
100	52	96	14/23	amber	1	9.070 508
250	72	130	19/26	amber	1	9.070 514
500	89	165	24/29	amber	1	9.070 519
1000	110	200	29/32	amber	1	9.070 524

### 2 Narrow-mouth reagent bottles with stopper, DURAN®

Amber or Clear. DURAN®. ISO 4796-2. With conical ground joint and glass stopper. Glass Type I/neutral glass as per USP, EP and JP. With Retrace code (Batch identification). Certificate available via the Internet. Autoclavable.

Capacity	Dia.	Height	Neck	Colour	PK	Cat. No.
ml	mm	mm	NS			
10	28	52	10/19	clear	1	9.070 808
25	36	64	12/21	clear	1	9.070 814
50	42	80	14/15	clear	1	9.070 817
100	52	96	14/15	clear	1	9.070 824
250	70	130	19/26	clear	1	9.070 836
500	86	164	24/29	clear	1	9.070 844
1000	107	200	29/32	clear	1	9.070 854
2000	134	248	29/32	clear	1	9.070 863
5000	182	323	45/40	clear	1	9.070 873
10000	227	398	60/46	clear	1	9.070 886
50	42	80	14/15	amber	1	9.070 917
100	52	96	14/15	amber	1	9.070 924
250	70	130	19/26	amber	1	9.070 936
500	86	164	24/29	amber	1	9.070 944
1000	107	200	29/32	amber	1	9.070 954
2000	134	248	29/32	amber	1	9.070 963



# 1. Lab consumables

## Vessels/Narrow mouth bottles

### 1 Square, screw cap bottles, narrow neck, soda-lime glass

Soda-lime glass, with high threaded neck. Without closure. Hydrolytical class 3.  
 Clear: without pouring ring and dust cap  
 Amber: with pouring ring and dust cap

DURAN Group



Capacity ml	Dia. mm	Height mm	Neck thread GL	Colour	PK	Cat. No.
100	49	119	32	clear	1	9.072 051
250	64	155	32	clear	1	9.072 052
500	77	186	32	clear	1	9.072 055
1000	96	223	45	clear	1	9.072 060
100	49	119	32	amber	1	9.072 061
250	64	155	32	amber	1	9.072 062
500	77	186	32	amber	1	9.072 065
1000	96	223	45	amber	1	9.072 070

### 2 Tamper-evident caps for DURAN® square screw cap bottles, PP

Blue PP. For square screw cap bottles (soda-lime glass).  
 Type H: Narrow-neck, with high form thread.  
 Type K: Wide-necked, with short form thread.

DURAN Group

Temperature (max.): 140°C

Type	Thread	Dia. mm	Height mm	PK	Cat. No.
32 H	32	45	32	1	9.072 041
45 H	45	60	35	1	9.072 042
32 K	32	44	23	1	9.072 092
45 K	45	58	27	1	9.072 093
54 K	54	69	29	1	9.072 094
60 K	60	78	29	1	9.072 095



### 3 Screw caps for narrow-mouth bottles, PP

**NEW!**

PP Cap (Pilferproof) 28 neck finish, with approx. 19.4mm inner mouth.  
 For bottles 9.070 200 to 9.070 205 series.

Description	PK	Cat. No.
Closure, black, with foam insert	500	6.303 525
Closure, white, with cone sealing	500	9.070 210
Closure, white, with pouring ring	500	9.070 211
Closure, child proof lock, white, with pouring ring	500	9.070 212
Originality closure, white, with foam insert	500	9.070 213



### 4 LLG-Narrow-neck bottles with cap, PE-LD

**NEW!**

Transparent with cap.

Capacity ml	Dia. mm	Height mm	Thread external dia. mm	PK	Cat. No.
50	37.0	78.0	18	50	9.073 500
100	47.0	105.0	18	20	9.073 501
250	63.0	119.0	25	10	9.073 502
500	78.0	152.0	25	10	9.073 503
1000	96.0	206.0	28	4	9.073 504
2000	120.0	264.0	28	1	9.073 505



# 1. Lab consumables

## Vessels/Narrow mouth bottles



### 1 Narrow-mouth bottles, series 301, PE-LD

Natural. Round bottle without closure. Tall, narrow form, leakproof. Easy to handle.  
Also available with dropper cap or spray cap.

Kautex

**Please order cap separately.**

Capacity	Dia.	Height	Thread external dia.	PK	Cat. No.
ml	mm	mm	mm		
10	26.0	46.5	14	1	9.072 741
20	31.5	56.5	14	1	9.072 742
30	33.5	68.5	14	1	9.072 743
50	37.5	86.0	18	1	9.072 745
100	47.5	105.0	18	1	9.072 748
200	57.5	133.0	18	1	9.072 751
250	61.3	140.0	25	1	9.072 750
500	75.0	177.0	25	1	9.072 752
1000	97.5	223.5	28	1	9.072 755
2000	120.0	264.0	28*	1	9.072 757
3000	138.0	300.0	32*	1	9.072 759
5000	162.0	355.0	40*	1	9.072 762

Height in mm without seal.

\*includes seal.



### 2 Caps for narrow-neck bottles, series 301, PE-LD

Natural.

Kautex

Type	For bottles	For Thread o.d.	PK	Cat. No.
	ml	mm		
Screw-type cap	10, 20, 30	14	1	9.072 771
Screw-type cap	50, 100, 200	18	1	9.072 773
Screw-type cap	250, 500	25	1	9.072 775
Screw-type cap	1000, 2000	28	1	9.072 777
Screw-type cap	3000	32	1	9.072 778
Dropping cap *	10, 20, 30	14	1	9.073 314
Dropping cap *	50, 100, 200	18	1	9.073 315
Dropping cap *	250, 500	25	1	9.073 318
Dropping cap *	1000, 2000	28	1	9.073 319
Small nozzle cap with retaining band, red PVC	all		1	9.073 320
Spray cap	100	18	1	9.223 110
Spray cap	200	18	1	9.223 111
Spray cap	250	25	1	9.223 112
Spray cap	500	25	1	9.223 113
Spray cap	1000	28	1	9.223 114
Spray cap	2000	28	1	9.223 120

\* with PVC-Nozzle, red.



### 3 Round square-shouldered bottles, series 302, PE-LD

Natural. Round. Tall, narrow form, leakproof. Easy to handle. Also available with dropper cap or spray cap.

Kautex

**Please order cap separately.**

Capacity	Dia.	Thread external dia.	Height	PK	Cat. No.
ml	mm	mm	mm		
50	36.5	18	80.0	1	9.073 365
100	44.5	18	98.5	1	9.073 366
250	60.0	25	127.5	1	9.073 368
500	75.5	25	160.0	1	9.073 369
1000	95.0	28	196.0	1	9.073 370

Height in mm without cap.

### 1 Caps for square-shouldered bottles, series 302, PE-LD

Natural. For bottles 9.073 365 to 9.073 370.

Kautex



Cover type	For Thread o.d. mm	For bottles ml	PK	Cat. No.
Screw cap	18	50, 100	1	9.072 773
Screw cap	25	250, 500	1	9.072 775
Screw cap	28	1000	1	9.072 777
Dropper cap, with teat*	18	50, 100	1	9.073 315
Dropper cap, with teat*	25	250, 500	1	9.073 318
Dropper cap, with teat*	28	1000	1	9.073 319
Small captive cap, red PVC		all	1	9.073 320
Spray cap	18	100	1	9.223 110
Spray cap	25	250	1	9.223 112
Spray cap	25	500	1	9.223 113
Spray cap	28	1000	1	9.223 114

\* incl. small PVC captive cap, red

### 2 Round Bottles, series 308, PE-HD

Neck design allows single handed use.

Used for:

- Packaging
- Storage
- Transport

**Please order closure separately.**

Kautex



Capacity ml	Dia. mm	Neck dia. mm	Thread external dia. mm	Height mm	PK	Cat. No.
50	32	17.0	22	86.0	1	9.072 783
100	41	17.0	22	108.5	1	9.072 784
250	56	17.0	22	135.5	1	9.072 785
500	70	19.4	25	173.0	1	9.072 786
1000	89	19.4	25	211.5	1	9.072 787

Height without cap.

### 3 Caps for Round Bottles, series 308, PP

White caps.

Kautex



Description	For bottles ml	Thread Internal Ø mm	PK	Cat. No.
Neck opening caps	50 / 100 / 250	22	1	9.072 788
Neck opening caps	500 / 1000	25	1	9.072 789
Cap with lip seal	50 / 100 / 250	22	1	9.072 790
Cap with lip seal	500 / 1000	25	1	9.072 791



# 1. Lab consumables

## Vessels/Narrow mouth bottles



### 1 Narrow-mouth reagent bottles, series 308/310, PE-HD, UN-approved

UN-approved. Square except 500ml size which is round and has an outside diameter of 77mm. Available in natural or black. Suitable for transporting hazardous liquids. Leakproof.

Kautex

**Please order closure separately.**

Capacity ml	Colour	Neck thread GL	Weight g	Height mm	PK	Cat. No.
500	natural	45	50	176.5	1	9.073 373
1000	natural	45	88	211.8	1	9.073 374
2500	natural	45	163	282.0	1	9.073 375
500	black	45	52	176.5	1	9.073 376
1000	black	45	92	211.8	1	9.073 377
2500	black	45	167	282.0	1	9.073 378

Height in mm without closure.



### 2 Narrow-mouth bottles, series 310 "Clear Grip", PP

Kautex

- glass-like transparency and finish (ideal for product presentation)
- purity
- low weight (low density)
- good chemical resistance
- excellent thermal stability
- good stiffness and impact resistance
- autoclavable (max. 121°C)
- easily recyclable

**Please order closures separately.**

Capacity ml	Neck thread GL	Weight g	Height mm	PK	Cat. No.
100	32	15	108.0	1	9.073 456
250	32	21	136.0	1	9.073 457
500	45	40	169.0	1	9.073 458
1000	45	61	204.0	1	9.073 459



### 3 Narrow-mouth reagent bottles, series 310 "Safe Grip", PE-HD, UN-approved

Kautex

UN-approved. Thanks to an enlarged handle, in comparison to the series 310 standard narrow mouth bottles, this product guarantees stability and safety for handling dangerous bulk materials with a high specific gravity.

**Please order closure separately.**

Capacity ml	Colour	Neck thread GL	Height mm	Weight g	PK	Cat. No.
2500	white	45	294.0	190	1	9.073 301
2500	black	45	294.0	190	1	9.073 302



### 4 Closures for narrow-mouth reagent bottles, series 310, PP, UN-approved

Kautex

UN-approved.

**Type 1: Light cap**, black, tamper-evident ring and PTFE cup-shaped liner.

**Type 2: Bell cap**, black, with red PP tamper-evident ring and cup-shaped PTFE liner.

**Type 3: Bell cap**, red, with degassing membrane, red PP tamper-evident ring and cup-shaped, perforated PTFE liner.

Type	For Thread o.d. mm	For bottles ml	PK	Cat. No.
1. Light cap	45	500, 1000, 2500	1	9.073 379
2. Bell cap	45	500, 1000, 2500	1	9.073 380
3. Bell cap	45	500, 1000, 2500	1	9.073 381

### 1 Square reagent bottles, PE-HD

Natural or white. Narrow neck.

**Please order closures separately.**

Kautex



Capacity	Width	Depth	Height without closure	Thread external dia.	Colour	PK	Cat. No.
ml	mm	mm	mm	mm			
100	45	45	108.0	32	natural	1	9.072 850
250	60	60	136.0	32	natural	1	9.072 851
500	74	74	170.0	32	natural	1	9.072 852
1000	85	85	221.0	32	natural	1	9.072 853
2500	122	122	272.0	45	natural	1	9.072 854
100	45	45	108.0	32	white	1	9.072 855
250	60	60	136.0	32	white	1	9.072 856
500	74	74	170.0	32	white	1	9.072 857
1000	85	85	221.0	32	white	1	9.072 858
2500	122	122	272.0	45	white	1	9.072 859

### 2 Caps for narrow neck reagent bottles, PP

**a) Tamper-evident cap**, blue, with conical seal and tamper-evident ring. Immediately indicates unauthorised opening. Perfect for determining whether the cap has been removed.

**b) Tamper-evident cap**, red, with PE foam lining and tamper-evident ring. Immediately indicates unauthorised opening. Perfect for determining whether the cap has been removed.

**c) Tamper-evident cap**, white/blue, with child-proof lock, conical seal and tamper-evident ring. Immediately indicates unauthorised opening. Perfect for determining whether the cap has been removed.

**d) Tamper-evident cap**, white/red, with child proof lock, tamper-evident ring, conical seal and degassing membrane. Immediately indicates unauthorised opening. Perfect for determining whether the cap has been removed.

**e) Tamper-evident cap (not outlined below)**, red, degassing cap, with conical gasket and degassing membrane.

Kautex



For bottles	For Thread o.d.	Figure	PK	Cat. No.
ml	mm			
100 to 1000	32	a	1	9.072 041
2500	45	a	1	9.072 862
100 to 1000	32	b	1	9.072 863
2500	45	b	1	9.072 868
100 to 1000	32	c	1	9.072 866
100 to 1000	32	d	1	9.072 867
100 to 1000	32	without Fig.	1	9.072 905

### 3 Narrow-mouth bottles Type 1600, FEP with screw cap ETFE

Transparent. Teflon® FEP bottle with leakproof Teflon® ETFE screw cap. Highly resistant to chemicals, corrosion and temperature. Autoclavable - cap should be unscrewed before autoclaving.

Nalgene

Type	Capacity	Screw cap dia.	PK	Cat. No.
	ml	mm		
1600	30	20	1	9.103 011
1600	60	20	1	9.103 012
1600	125	24	1	9.103 013
1600	250	24	1	9.103 014
1600	500	28	1	9.103 015
1600	1000	38	1	9.103 016
1600	2000	38-430*	1	9.103 017

\* with high form thread.

Teflon® and Tefzel® are a registered trademark of DuPont.




**1**

### 1 Narrow-mouth bottles with screw cap Type 2006, PP

PP bottle and screw cap. High level of chemical resistance. Leakproof. Autoclavable - cap must be unscrewed before autoclaving.

*Nalgene*

Type	Capacity ml	Screw cap dia. mm	PK	Cat. No.
2006	4	13	1	9.103 000
2006	8	20	1	9.103 001
2006	15	20	1	9.103 002
2006	30	20	1	9.103 003
2006	60	20	1	9.103 004
2006	125	24	1	9.103 005
2006	250	24	1	9.103 006
2006	500	24	1	9.103 007
2006	1000	38-430*	1	9.103 008

\* with high form thread.


**2**

### 2 Narrow-mouth bottles Type 2002, PE-HD, with screw cap, PP

PE-HD bottle with PP leakproof screw cap. High level of chemical resistance.

*Nalgene*

Type	Capacity ml	Screw cap dia. mm	PK	Cat. No.
2002	4	13	1	9.103 100
2002	8	20	1	9.103 101
2002	15	20	1	9.103 102
2002	30	20	1	9.103 103
2002	60	20	1	9.103 104
2002	125	24	1	9.103 105
2002	250	24	1	9.103 107
2002	500	28	1	9.103 108
2002	500	38-430*	1	9.103 109
2002	1000	38-430*	1	9.103 110

\* with high form thread.

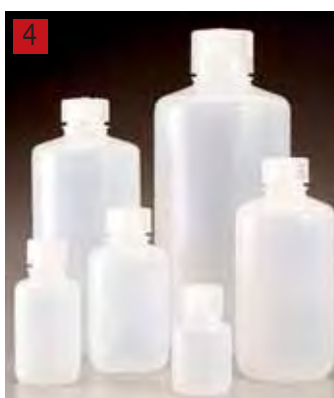

**3**

### 3 Narrow mouth bottles Economy, PE-HD, Type 2089, with screw cap, PP

With PP screw cap. Economical, break-resistant bottle. Guaranteed leakproof for safe sampling, shipping and storage. Translucent bottle allows viewing of liquid level. EPA-specified sample bottle material for a wide variety of inorganic compound and elemental analyses.

*Nalgene*

Type	Capacity ml	Cover type mm	PK	Cat. No.
2089	30	20	1	7.047 962
2089	60	20	1	7.047 963
2089	125	24	1	7.047 964
2089	250	24	1	7.047 965
2089	500	28	1	7.047 966
2089	1000	38-430	1	7.047 967


**4**

### 4 Narrow mouth bottles Economy Typ 2087, PPCO, with screw cap, PP

With PP screw cap. General-purpose, single-use sample bottle. Leakproof. Autoclavable.

*Nalgene*

Type	Capacity ml	Cover type mm	PK	Cat. No.
2087	30	20	1	9.103 035
2087	60	20	1	9.103 036
2087	125	24	1	9.103 037
2087	250	24	1	9.103 038
2087	500	28	1	9.103 039
2087	1000	38-430	1	9.103 040

# 1. Lab consumables

## Vessels/Narrow mouth bottles

### 1 Narrow mouth bottles Economy, Type DS2085, DS2185, PE-HD, brown, with screw cap, PP NEW!

With amber PP screw cap. Protects light sensitive samples from UV/VIS light transmission during sampling, shipping or storage. Easy retrieval of grab samples and reduces turbulence when filling. Single-use sample bottle. Leakproof.

Nalgene



Type	Capacity ml	Cover type	Central neck	PK	Cat. No.
DS2085	30	20	narrow	1	7.049 878
DS2085	60	20	narrow	1	7.049 879
DS2085	125	24	narrow	1	7.049 880
DS2085	250	24	narrow	1	7.049 881
DS2085	500	28	narrow	1	7.049 882
DS2085	1000	38-430	narrow	1	7.049 883

### 2 Narrow-Mouth Bottle Type 2099, PassPort IP2 , PE-HD, with PP screw cap NEW!

With PP screw closure. Excellent for small-scale inter-lab shipping of hazardous samples and chemicals such as corrosives and cleaning compounds. Recommended for customers who are designing, assembling and certifying their own combination packaging. Heavy-duty walls. Designed to resist splitting and puncturing from shipping shocks proven effective by industrial users. Molded into the bottom: IP2 marking, material, volume, registration notch and Nalgene® brand name. Evaluated at 15psi (103 kPa) per 49 CFR 173.27 (c) (2), ICAO Technical Instructions Part 4; 1.1.6, and IATA Dangerous Goods Regulations Section 5.0.2.9. Leakproof.

Nalgene



Type	Capacity ml	Cover type mm	PK	Cat. No.
2099	30	20-415	1	7.047 975
2099	60	20-415	1	7.047 976
2099	125	24-415	1	7.047 977
2099	250	24-415	1	7.047 978
2099	500	28-415	1	7.047 980
2099	1000	38-430	1	7.047 981
2099	4000	38-430	1	7.047 979

### 3 4 Bottles with Low Particulate/Low Metals, Type 381600, 382003 NEW!

Certified to contain less than 20 particles per ml at 0.3µm and larger. Bottles double-bagged under laminar flow hood. Leakproof. Certificate of analysis included in each case. Trace metal concentrations certified to ppb levels.

Nalgene

Metals certified to (µg/L) ppb levels <0.20 Hg, <0.5 Be, <1.0 As, Cd, Pb, <2.0 Sb, Se, <5.0 Ag, Co, Cr, Cu, Mn, Th, V, <10 Ba, Ni, Zn, <50 Mg, <75 Al, <100 Ca, Fe, K, Na.

Leakproof. FEP bottle with ETFE screw cap, PE-LD bottle with PP screw cap.

Type	Capacity ml	Cover type	Material	PK	Cat. No.
381600	125	24-415	FEP	1	9.102 950
381600	250	24-415	FEP	1	9.102 951
381600	500	28-415	FEP	1	9.102 952
381600	1000	38-415	FEP	1	9.102 953
382003	125	24-415	PE-LD	1	9.102 954
382003	250	24-415	PE-LD	1	9.102 955
382003	500	28-415	PE-LD	1	9.102 956
382003	1000	38-430	PE-LD	1	9.102 957



# 1. Lab consumables

## Vessels/Narrow mouth bottles-Square bottles



### 1 Narrow-Mouth Bottles with Low Particle Content Type 382099, PassPort IP2, PE-HD, with screw cap, PP NEW!

Low particulate PassPort IP2 bottles with PP screw cap. Narrow-mouth bottles with an average of less than 30 particles per ml at 0.3µm and greater. Excellent for storing high-purity chemicals. Product includes a certificate of quality that assures the product has been tested and accepted in accordance with specifications. Low Particulate IP2 Bottles can be used in compliance with the regulations for customers who are designing, assembling and certifying their own combination packaging. Non-sterile. Leakproof. Nalgene

Type	Capacity ml	Cover type	PK	Cat. No.
382099	125	24	1	<b>6.232 120</b>
382099	250	24	1	<b>9.102 965</b>
382099	500	28	1	<b>7.625 956</b>
382099	1000	38-430	1	<b>6.236 935</b>



### 2 Aluminium bottles

For storage, transport or shipment of samples/ reference materials, that must not be contaminated in any way. Bürkle

- Complies with PCB regulations
- Bulk supplies with UN approval available on request
- Pure aluminium (AL99.5 material)
- PP screw cap with internal aluminium wad

Capacity ml	Dia. mm	Height mm	Thread external dia. mm	PK	Cat. No.
38	35	70	38	1	<b>9.072 168</b>
60	40	88	38	1	<b>9.072 169</b>
120	57	97	38	1	<b>9.072 170</b>
300	57	160	38	1	<b>9.072 171</b>
600	74	192	38	1	<b>9.072 172</b>
1200	88	248	38	1	<b>9.072 173</b>

### 3 4 Square bottles, PE-HD and PVC, with PE-LD screw cap

Square, PE-HD, Natural, translucent bottle with PE-LD screw cap with leakproof seal. Kautex  
 Square, PVC, transparent, rigid bottle with PP screw cap.  
**Please order screw caps separately.**

Capacity ml	Width mm	Depth mm	Height mm	Thread external dia. mm	Material	PK	Cat. No.
100	40.5	32.0	110.5	18	PE-HD	1	<b>9.072 808</b>
250	53.5	42.0	146.5	25	PE-HD	1	<b>9.072 814</b>
500	63.5	54.5	180.0	25	PE-HD	1	<b>9.072 819</b>
1000	84.0	66.0	222.5	25	PE-HD	1	<b>9.072 824</b>
250	59.0	38.0	151.5	25	PVC	1	<b>9.072 914</b>
500	70.0	50.0	189.0	25	PVC	1	<b>9.072 919</b>
1000	87.5	61.0	233.0	25	PVC	1	<b>9.072 924</b>

Height in mm without cap.



# 1. Lab consumables

## Vessels/Square bottles

### 1 Caps for PE-HD and PVC square bottles

Kautex



Description	For bottles	PK	Cat. No.
Screw cap, natural PE-LD	100 ml, PE-HD	1	9.072 773
Screw cap, natural PE-LD	250 to 500 ml, PE-HD	1	9.072 775
Dropper cap, natural PE-LD, with teat*	100 ml, PE-HD	1	9.073 315
Dropper cap, natural PE-LD, with teat*	250, 500 and 1000 ml, PE-HD	1	9.073 318
Moulded plastic cap, black melamine	100 ml, PE-HD	1	9.073 321
Moulded plastic cap, black melamine	250, 500 and 1000 ml, PE-HD	1	9.073 322
Moulded plastic cap, melamine, white	250, 500 and 1000 ml, PVC	1	9.072 929
Screw cap, white PP, with washbottle jet	250, 500 and 1000 ml, PVC	1	9.072 915

\* incl. small captive cap

### 2 Square bottles Type 2007, PE-HD, with PP screw cap

PE-HD bottle with PP screw cap. Leakproof.

Nalgene



Type	Capacity ml	Screw cap dia. mm	Width mm	Depth mm	Height mm	PK	Cat. No.
2007	125	28	64	58	102	1	9.103 091
2007	250	38	76	48	114	1	9.103 092
2007	500	48	94	58	140	1	9.103 093
2007	1000	53	125	71	180	1	9.103 094
2007	2000	63	152	81	239	1	9.103 095

### 3 Square bottles Type 2015, PC, with screw cap, PP

PC bottle with leakproof PP screw cap. With moulded graduations and pouring rim. Ideal for storing aqueous solutions and for the short-term storage of cell culture media. Autoclavable.

Nalgene



Type	Capacity ml	Screw cap dia. mm	PK	Cat. No.
2015	30	20	1	9.103 071
2015	60	24	1	9.103 072
2015	125	38-430*	1	9.103 073
2015	250	38-430*	1	9.103 074
2015	500	38-430*	1	9.103 075
2015	1000	38-430*	1	9.103 076
2015	2000	53B	1	9.103 077

\* with high form thread.

# 1. Lab consumables

## Vessels/Spray, dropping bottles



### 1 LLG - Wash bottles - narrow neck, PE

Easy to squeeze, semirigid, translucent and excellent clarity.  
The stream of the liquid can be easily controlled by hand pressure.  
Dispensing tip provides extra fine stream - tip can be cut back in order to increase the flow rate, if required.

Capacity ml	PK	Cat. No.
100	1	9.223 500
250	1	9.223 501
500	1	9.223 502
1000	1	9.223 503



### 2 Narrow-mouth bottles, series 301, PE-LD

**NEW!**

Natural. Round bottle without closure. Tall, narrow form, leakproof. Easy to handle.  
Also available with dropper cap or spray cap.  
**Please order cap separately.**

Kautex

Capacity ml	Dia. mm	Height mm	Thread external dia. mm	PK	Cat. No.
10	26.0	46.5	14	1	9.072 741
20	31.5	56.5	14	1	9.072 742
30	33.5	68.5	14	1	9.072 743
50	37.5	86.0	18	1	9.072 745
100	47.5	105.0	18	1	9.072 748
200	57.5	133.0	18	1	9.072 751
250	61.3	140.0	25	1	9.072 750
500	75.0	177.0	25	1	9.072 752
1000	97.5	223.5	28	1	9.072 755
2000	120.0	264.0	28*	1	9.072 757
3000	138.0	300.0	32*	1	9.072 759
5000	162.0	355.0	40*	1	9.072 762

Height in mm without seal.

\*includes seal.



### 3 Caps for narrow-neck bottles, series 301, PE-LD

**NEW!**

Natural.

Kautex

Type	For bottles ml	For Thread o.d. mm	PK	Cat. No.
Screw-type cap	10, 20, 30	14	1	9.072 771
Screw-type cap	50, 100, 200	18	1	9.072 773
Screw-type cap	250, 500	25	1	9.072 775
Screw-type cap	1000, 2000	28	1	9.072 777
Screw-type cap	3000	32	1	9.072 778
Dropping cap *	10, 20, 30	14	1	9.073 314
Dropping cap *	50, 100, 200	18	1	9.073 315
Dropping cap *	250, 500	25	1	9.073 318
Dropping cap *	1000, 2000	28	1	9.073 319
Small nozzle cap with retaining band, red PVC	all		1	9.073 320
Spray cap	100	18	1	9.223 110
Spray cap	200	18	1	9.223 111
Spray cap	250	25	1	9.223 112
Spray cap	500	25	1	9.223 113
Spray cap	1000	28	1	9.223 114
Spray cap	2000	28	1	9.223 120

\* with PVC-Nozzle, red.

# 1. Lab consumables

## Vessels/Spray, dropping bottles

### 1 Round, square-shouldered bottles, series 302, PE-LD

Natural. Round. Tall, narrow form, leakproof. Easy to handle.  
Also available with dropper cap or spray cap.

Kautex

**Please order cap separately.**

Capacity	Dia.	Thread	Height	PK	Cat. No.
ml	mm	external dia. mm	mm		
50	36.5	18	80.0	1	9.073 365
100	44.5	18	98.5	1	9.073 366
250	60.0	25	127.5	1	9.073 368
500	75.5	25	160.0	1	9.073 369
1000	95.0	28	196.0	1	9.073 370

Height in mm without cap.



### 2 Caps for square-shouldered bottles, series 302, PE-LD

Natural. For bottles 9.073 365 to 9.073 370.

**NEW!**

Kautex



Cover type	For bottles ml	For Thread o.d. mm	PK	Cat. No.
Screw-type cap	50, 100	18	1	9.072 773
Screw-type cap	250, 500	25	1	9.072 775
Screw-type cap	1000	28	1	9.072 777
Dropping cap *	50, 100	18	1	9.073 315
Dropping cap *	250, 500	25	1	9.073 318
Dropping cap *	1000	28	1	9.073 319
Small nozzle cap with retaining band, red PVC	all		1	9.073 320
Spray cap	100	18	1	9.223 110
Spray cap	250	25	1	9.223 112
Spray cap	500	25	1	9.223 113
Spray cap	1000	28	1	9.223 114

\* incl. small PVC captive cap, red

### 3 Wash bottles with screw cap Type 2403, PTFE

Screw cap, jet and feed tube are one-piece moulded from PTFE.  
Ideal for contamination-free work and suitable for trace element analysis.

Nalgene

Type	Capacity ml	Screw cap dia. mm	PK	Cat. No.
2403	125	24	1	9.223 231
2403	250	24	1	9.223 232
2403	500	28	1	9.223 233
2403	1000	38	1	9.223 234



### 4 Wide-mouth wash bottles, Unitary™, Type 2402, PE-LD, with screw cap, PP

PE-LD Bottle with leakproof PP screw cap. Wide mouth neck.  
Bottle and dispensing jet are moulded in one piece.

Nalgene

Type	Capacity ml	Screw cap dia. mm	PK	Cat. No.
2402	125	24	1	9.223 236
2402	250	38	1	9.223 237
2402	500	38	1	9.223 238
2402	750	38	1	9.223 239
2402	1000	43	1	9.223 240





# 1. Lab consumables

## Vessels/Spray, dropping bottles



### 1 Wide-mouth wash bottles Unitary™ Type DS2408, PE-LD

Red. PE-LD bottle with leakproof PP screw cap.  
Bottle and dispensing jet are moulded in one piece.

Nalgene

Type	Capacity ml	Screw cap dia. mm	PK	Cat. No.
DS2408	250	38	1	9.223 252
DS2408	500	38	1	9.223 255



### 2 VITsafe™ Safety wash bottles, narrow neck, PP/PE-LD

**NEW!**

PP or PE-LD with printed safety information in accordance with regulation (EC) No. 1272/2008 (GHS) and Vent-Cap screw cap.

VITLAB

Dispensing tube with PP tip to optimise the backflow of the medium. The lack of a spray insert and smoothly moulded internal tube surface make it possible to avoid almost all turbulence in the liquid.

Permanently printed labels, stating the statutory information required in accordance with GHS, as well as all important information: quadrilingual chemical name in German, English, French and Spanish, chemical formula, CAS number, hazard pictogram, signal word, hazard statements - H-phrases, precautionary statements - P-phrases plus NFPA code. PP bottles are autoclavable (at 121°C for 20mins.).

Label	Capacity ml	Neck thread GL	Material	PK	Cat. No.
Acetone	250	25	PP	1	9.223 345
Acetone	500	25	PP	1	9.223 351
Acetone	1000	32	PP	1	9.223 360
Acetonitrile	500	25	PE-LD	1	7.058 640
Distilled water	250	25	PE-LD	1	9.223 340
Distilled water	500	25	PE-LD	1	9.223 346
Distilled water	1000	32	PE-LD	1	9.223 355
Ethanol	250	25	PE-LD	1	9.223 344
Ethanol	500	25	PE-LD	1	9.223 350
Ethanol	1000	32	PE-LD	1	9.223 359
Ethyl acetate	250	25	PE-LD	1	9.223 343
Ethyl acetate	500	25	PE-LD	1	9.223 349
Ethyl acetate	1000	32	PE-LD	1	9.223 358
Acetic acid	500	25	PE-LD	1	7.079 737
Isopropanol	250	25	PE-LD	1	9.223 342
Isopropanol	500	25	PE-LD	1	9.223 348
Isopropanol	1000	32	PE-LD	1	9.223 357
Methanol	250	25	PE-LD	1	9.223 341
Methanol	500	25	PE-LD	1	9.223 347
Methanol	1000	32	PE-LD	1	9.223 356
Methylene chloride	500	25	PE-LD	1	7.078 722
Methylethylketone (MEK)	500	25	PP	1	9.223 354
N, N-Dimethylformamide	500	25	PE-LD	1	6.401 458
Xylene	500	25	PE-LD	1	7.087 939
Hexane	500	25	PE-LD	1	7.009 310
Heptane	500	25	PE-LD	1	6.073 505
Tetrahydrofurane (THF)	500	25	PE-LD	1	7.087 940
Toluene	500	25	PE-LD	1	7.087 938

### 1 VITsafe™ safety wash bottles, wide-mouth, PP/PE-LD NEW!

PP or PE-LD printed with safety information in accordance with regulation (EC) No. 1272/2008 (GHS) and Vent-Cap screw cap. VITLAB

Dispensing tube with PP tip to optimize the backflow of the medium. The lack of a spray insert and the smooth moulding of the inner tube surface make it possible to avoid almost all turbulence in the liquid.  
 Permanent printed labelling information stating the statutory information required in accordance with GHS, as well as all important information: quadrilingual chemical name in German, English, French and Spanish, chemical formula, CAS number, hazard pictogram, signal word, hazard statements - H-phrases, precautionary statements - P-phrases plus NFPA code

PP bottles are autoclavable (at 121°C for 20mins.).



Label	Capacity ml	Neck thread GL	Material	PK	Cat. No.
Acetone	250	45	PP	1	9.223 375
Acetone	500	45	PP	1	9.223 381
Acetone	1000	63	PP	1	9.223 390
Acetonitril	500	45	PE-LD	1	6.235 042
Distilled water	250	45	PE-LD	1	9.223 370
Distilled Water	500	45	PE-LD	1	9.223 376
Distilled water	1000	63	PE-LD	1	9.223 385
Ethanol	250	45	PE-LD	1	9.223 374
Acetic acid	500	45	PP	1	6.234 466
Ethanol	500	45	PE-LD	1	9.223 380
Ethanol	1000	63	PE-LD	1	9.223 389
Ethyl acetate	250	45	PE-LD	1	9.223 373
Ethyl acetate	500	45	PE-LD	1	9.223 379
Ethyl acetate	1000	63	PE-LD	1	9.223 388
Isopropanol	250	45	PE-LD	1	9.223 372
Isopropanol	500	45	PE-LD	1	9.223 378
Hexane	500	45	PE-LD	1	9.223 391
Heptane	500	45	PE-LD	1	9.223 392
Isopropanol	1000	63	PE-LD	1	9.223 387
Methanol	250	45	PE-LD	1	9.223 371
Methanol	500	45	PE-LD	1	9.223 377
Methanol	1000	63	PE-LD	1	9.223 386
Methylethylchloride	500	45	PE-LD	1	6.225 506
Methylethylketone (MEK)	500	45	PP	1	9.223 384
N,N-Dimethylformamide	500	45	PE-LD	1	6.225 507
Pentan	500	45	PP	1	9.223 396
Tetrahydrofurane (THF)	500	45	PE-LD	1	9.223 393
Toluene	500	45	PE-LD	1	9.223 394
Xylol	500	45	PP	1	9.223 395

### 2 Wash bottle caps, Vent-Cap, PP

PP, with jet. Screw cap and dispensing tube with pointed end to optimise the backflow of the medium. The lack of a spray insert and the even molding of the inner-diameter make it possible to avoid almost all turbulence in the liquid. VITLAB

Neck thread GL	PK	Cat. No.
25	1	9.223 400
32	1	9.223 401
45	1	9.223 402
63	1	9.223 403



# 1. Lab consumables

## Vessels/Spray, dropping bottles



### 1 Safety wash bottles, wide mouth, series 303, PE-LD

**NEW!**

Laboratory safety wash bottle printed with symbols for hazardous substances. Leakproof. Description of contents is given in German, English and French. Scratch-resistant ink. Bottles can be fully emptied thanks to a movable outlet jet, also can be used upside down. Safety note: If the base of the jet is positioned above the liquid level, no liquid will be ejected in the event of a change in temperature. The jet tip is sealed for safety during transport and must be cut before use. With fitted PE-LD washbottle cap.

Kautex

Type	Cover type	Capacity	Thread external dia.	Height	PK	Cat. No.
		ml	mm	mm		
Acetone	Red	250	40	120	1	9.073 355
Acetone	Red	500	50	154	1	9.073 356
Ethanol	Green	250	40	120	1	9.073 357
Ethanol	Green	500	50	154	1	9.073 358
Isopropanol	Yellow	250	40	120	1	9.073 359
Isopropanol	Yellow	500	50	154	1	9.073 360
Methanol	Orange	250	40	120	1	9.073 361
Methanol	Orange	500	50	154	1	9.073 362
Distilled water	Blue	250	40	120	1	9.073 363
Distilled water	Blue	500	50	154	1	9.073 364

Height in mm without closure.



### 2 Wash bottles, colour-coded, PE- LD

**NEW!**

VITLAB

Capacity ml	Neck thread GL	Colour	Height mm	Dia. mm	PK	Cat. No.
250	25	red	135	58	1	7.009 292
250	25	green	135	58	1	7.009 293
250	25	yellow	135	58	1	7.009 294
250	25	blue	135	58	1	7.009 295
500	25	red	180	74	1	7.009 296
500	25	green	180	74	1	7.009 297
500	25	yellow	180	74	1	7.009 298
500	25	blue	180	74	1	7.009 299



### 3 Wash bottles Type 2401, PE-LD

PE-LD bottle and suction tube. PP screw cap and suction tube support moulded as one piece.

Nalgene

Type	Capacity ml	Screw cap dia. mm	PK	Cat. No.
2401	125	24	1	9.223 223
2401	250	24	1	9.223 224
2401	500	28	1	9.223 225
2401	1000	38-430*	1	9.223 226

\*with high form thread



### 4 Dropper bottles, PE-HD

Natural. Without PE-HD combination closure with screw-on dropping tip which must be ordered separately. Highly suitable for adhesives and other liquids that can be finely dispensed.

Capacity ml	Dia. mm	PK	Cat. No.
10	24.0	1	9.073 310
25	31.3	1	9.073 311
50	40.0	1	9.073 312

# 1. Lab consumables

## Vessels/Spray, dropping bottles

<b>1 Cap for dropping bottles, PE-HD</b>			
For bottles 9.073 310 to 9.037 312 series.			<i>Kautex</i>
Type	PK	Cat. No.	
Cap for dropping bottles	1	<b>9.073 313</b>	



<b>2 Dropper bottle Type 2414, FEP/ETFE</b>			
Teflon® FEP bottle. Tefzel® ETFE dropper and cap. Excellent chemical resistance. Autoclavable.			<i>Nalgene</i>
Type	Capacity ml	PK	Cat. No.
2414	30	1	<b>9.073 300</b>
Teflon® and Tefzel® are a registered trademark of DuPont.			



<b>3 4 Dropping bottles, pipette bottles, soda-lime glass</b>				<b>NEW!</b>
Soda-lime glass. Amber or Clear. With interchangeable ground joint transparent pipette.				
Capacity ml	Height mm	Colour	PK	Cat. No.
50	77	clear	1	<b>9.072 640</b>
100	103	clear	1	<b>9.072 641</b>
250	131	clear	1	<b>9.072 642</b>
50	77	amber	1	<b>9.072 643</b>
100	103	amber	1	<b>9.072 644</b>
250	131	amber	1	<b>9.072 645</b>
Pipette teats natural rubber/Latex			1	<b>9.072 681</b>



<b>5 Pressurised sprays LaboPlast®, PE-HD</b>						
PE/PP/glass-fibre reinforced PA, V2A, FPM/bottle material: PE-HD. With short spray nozzle. Left-handed and right-handed pistol control. The pressurised spray has a working pressure of 4 bar.						<i>Bürkle</i>
Capacity ml	Ext. diam. mm	Height mm	Neck dia. mm	Weight g	PK	Cat. No.
1500	142	315	45	520	1	<b>9.223 162</b>
						<i>Bürkle</i>
Type	PK	Cat. No.				
Spray lance, 300mm long	1	<b>9.223 165</b>				
Foam jet	1	<b>9.223 166</b>				



## Vessels/Spray, dropping bottles-Boxes, Baskets


**1**

### 1 Spray bottles LaboPlast®, PE/PP

Trigger-action spray pump with adjustable spray nozzle.

*Bürkle*

Capacity ml	Ext. diam. mm	Height mm	Neck dia. mm	Weight g	PK	Cat. No.
250	60	220	19	80	1	9.223 152
500	75	240	19	95	1	9.223 155
1000	98	295	19	130	1	9.223 160


**2**

### 2 Aquaria, soda-lime glass

Thick-walled with coarse ground rim.

Width mm	Depth mm	Height mm	PK	Cat. No.
100	100	100	1	9.003 906
100	150	150	1	9.003 920
130	180	180	1	9.003 932
150	200	200	1	9.003 941
180	250	220	1	9.003 951
220	300	240	1	9.003 954
230	360	260	1	9.003 964


**3**

### 3 Display boxes, PS

Polystyrol. Heavy duty, industrial quality. Stackable (lengthways and crosswise). With RAL certificate. Shock-resistant, high impact PS. Food safe colors. Smooth underbody, therefore suitable for transport.

Colour	Width mm	Length mm	Height mm	PK	Cat. No.
red	100	160/140	75	1	9.033 121
blue	100	160/140	75	1	9.033 123
green	100	160/140	75	1	9.033 124
red	145	232/200	125	1	9.033 131
blue	145	232/200	125	1	9.033 133
green	145	232/200	125	1	9.033 134
red	200	336/300	150	1	9.033 141
blue	200	336/300	150	1	9.033 143
green	200	336/300	150	1	9.033 144


**4**

### 4 Stacking boxes, PP

PP. May be stacked and linked with reinforcing and stacking ribs. Smoothly rounded, without corners. Easy to clean. Two sintered metal straps are located on the lid as lid clamps.

 9L capacity  
29L capacity

 Dim. (W x L x H): 212 x 350 x 165mm  
Dim. (W x L x H): 360 x 440 x 240mm

Colour	Capacity litres	PK	Cat. No.
red	9	1	9.301 460
red	29	1	9.301 470
blue	9	1	9.301 463
blue	29	1	9.301 473


**5**

### 5 Rectangular tanks Type 14100 with lid, PE-HD

Overlapping flange gives strength and makes carrying easier.

*Nalgene*

Type	Capacity L	Width mm	Length mm	Height mm	PK	Cat. No.
14100	8	200	200	200	1	9.301 101
14100	23	250	360	250	1	9.301 102
14100	27	310	310	310	1	9.301 103
14100	42	310	460	310	1	9.301 104
14100	57	310	610	310	1	9.301 105
14100	57	310	470	470	1	9.301 113
14100	114	460	610	460	1	9.301 114
14100	170	460	610	610	1	9.301 122

### 1 Storage, Stacking and transport containers, PP/PE-HD

White. Thermoplastic resin.  
The raw material used is physiologically compatible and corresponds with the directives of the Federal Board of Health.

Capacity L	Internal dimensions (W x D x H) mm	External dimensions (W x D x H) mm	Material	PK	Cat. No.
9	510 x 310 x 60	560 x 360 x 64	PP	1	9.301 643
10	410 x 310 x 85	445 x 345 x 90	PP	1	9.301 641
23	395 x 295 x 200	460 x 330 x 210	PE-HD	1	9.301 663
28	600 x 400 x 120	660 x 450 x 130	PE-HD	1	9.301 647
31	480 x 410 x 160	550 x 450 x 170	PE-HD	1	9.301 645
35	530 x 315 x 210	600 x 350 x 220	PE-HD	1	9.301 661
50	600 x 400 x 210	660 x 450 x 220	PE-HD	1	9.301 649
96	600 x 400 x 400	660 x 450 x 410	PP	1	9.301 651



### 2 Lids for storage, stacking and transport containers.

Depth mm	Width mm	For	PK	Cat. No.
660	450	9.301 647 / 649 / 651	1	9.301 655
460	330	9.301 663	1	9.301 664



### 3 Collapsible boxes, PP

PP. Dim. (WxDxH): 470 x 340 x 240mm.

Colour	Capacity L	PK	Cat. No.
Black	30	1	9.301 469



### 4 Transport and storage containers, PE-HD

PE-HD. Stackable.

Kartell

Width mm	Length mm	Height mm	PK	Cat. No.
415	315	200	1	9.301 538
595	365	255	1	9.301 556
695	440	306	1	9.301 566



### 5 Euro-boxes, aluminium alloy

- High strength, corrosion resistant aluminium alloy
- Stainless steel hinges
- Cover for protection against dust and water
- Strengthened rim
- Cover clamp straps
- Can be secured with lead seal, padlock or fitted lock
- Stackable
- Impact resistant, blue plastic stacking brackets

Internal dimensions (W x D x H) mm	External dimensions (W x D x H) mm	Capacity litres	Weight g	PK	Cat. No.
350 x 250 x 310	400 x 300 x 340	27	3000	1	9.301 356
550 x 350 x 220	600 x 400 x 250	42	4700	1	9.301 357
550 x 350 x 310	600 x 400 x 340	60	4900	1	9.301 358
550 x 350 x 380	600 x 400 x 410	73	5200	1	9.301 359
750 x 350 x 310	800 x 400 x 340	81	6100	1	9.301 360
750 x 550 x 380	800 x 600 x 410	157	7500	1	9.301 361
750 x 550 x 580	800 x 600 x 610	239	8900	1	9.301 362

Usable dimensions approx. 30mm less than internal dimensions.




**1**

### 1 Cleaning baskets, stainless steel wire

With cover, made of non-rusting, electrochemically polished, stainless steel wire. For washing hardware. Frame, base and cover made of 8 x 8 x 1.2mm spot welded wire mesh.

L x W x H approx. 250 x 150 x 150mm.

Type	PK	Cat. No.
Cleaning basket	1	9.908 130


**2**

### 2 Transport baskets, stainless steel wire

Non-rusting stainless steel, electrochemically polished. With fold down handle that locks into position. Handle with plastic moulding. Made of 8 x 8 x 1.2mm diameter spot welded wire mesh. Base reinforced with two rods.

Width mm	Length mm	Height mm	PK	Cat. No.
300	400	200	1	9.143 090


**3**

### 3 Wire baskets, wire/nylon

White. Nylon coated, strong wire.

Width mm	Length mm	Height mm	PK	Cat. No.
100	100	100	1	9.033 341
120	120	120	1	9.033 342
140	140	140	1	9.033 344
160	160	160	1	9.033 346
200	200	200	1	9.033 350


**4**

### 4 Wire baskets, stainless steel

Polished stainless steel wire.

Width mm	Length mm	Height mm	PK	Cat. No.
100	100	100	1	9.033 410
120	120	120	1	9.033 412
140	140	140	1	9.033 414
160	160	160	1	9.033 416
180	180	180	1	9.033 418
200	200	200	1	9.033 420
200	300	200	1	9.033 430
200	400	200	1	9.033 440

### 1 Bottle carriers, wire/PE

Made of PE coated wire.  
For carrying laboratory bottles of various sizes.  
With base and fixed carrying handle.

For bottles ml	Int. dia. mm	Height mm	PK	Cat. No.
4 x 2000	130	110	1	9.102 204
6 x 2000	130	110	1	9.102 206
8 x 2000	130	110	1	9.102 208
10 x 2000	130	110	1	9.102 210
4 x 1000	100	100	1	9.102 214
6 x 1000	100	100	1	9.102 216
8 x 1000	100	100	1	9.102 218
10 x 1000	100	100	1	9.102 220
4 x 250	80	80	1	9.102 224
6 x 250	80	80	1	9.102 226
8 x 250	80	80	1	9.102 228
10 x 250	80	80	1	9.102 230
12 x 250	80	80	1	9.102 232



### 2 Bottle carriers, wire/plastic coated

Plastic-coated. Strong wire frame.

For bottles ml	PK	Cat. No.
4 x 1000	1	9.102 321
2 x 2500	1	9.102 322



### 3 LLG-Funnel, borosilicate glass

All funnel types have short stems and 60 degree bowl angle in order to precisely fit the relevant size filter papers.

Funnel dia. mm	PK	Cat. No.
40	1	9.251 200
60	1	9.251 201
80	1	9.251 202
100	1	9.251 203
120	1	9.251 204
150	1	9.251 205



### 4 Funnels, soda-lime glass

DIN ISO 4798. With short stem.

DURAN Group

Dia. mm	Height mm	For filter paper dia. mm	PK	Cat. No.
35	60	45 to 55	1	9.251 003
45	80	55 to 70*	1	9.251 005
55	95	70 to 90	1	9.251 007
70	120	110 to 125	1	9.251 011
80	140	125 to 150	1	9.251 016
100	180	150 to 185	1	9.251 019

\* Not to DIN ISO 4798.





## Vessels/Funnels



### 1 Funnels, DURAN®

DIN ISO 4798. With short stem. Glass Type I/neutral glass as per USP, EP and JP. Autoclavable.

DURAN Group

Dia. mm	Height mm	For filter paper dia. mm	PK	Cat. No.
35	60	45 to 55	1	9.251 123
45	80	55 to 70	1	9.251 128
55	95	70 to 90	1	9.251 133
70	120	110 to 125	1	9.251 138
80	140	125 to 150	1	9.251 141
100	180	150 to 185	1	9.251 146
120	210	185 to 240	1	9.251 023
150	250	240 to 270	1	9.251 157
200	325	320 to 385	1	9.251 161
300	409	500	1	9.251 169



### 2 Analytical funnels, DURAN®

For rapid filtration. Glass Type I/neutral glass as per USP, EP and JP. Autoclavable.

DURAN Group

Dia. mm	Height mm	For filter paper dia. mm	PK	Cat. No.
65	200	70 to 90	1	9.251 237
80	210	110 to 125	1	9.251 241
110	265	150 to 185	1	9.251 248



### 3 Urbanti TPX rapid funnels, Bel-Art

**NEW!**

TPX clear. For rapid filtration. Ribbed inside. Heat resistant up to 177°C. Autoclavable.

Top dia. mm	Stem int. Ø mm	Stem ext. Ø mm	For filter paper dia. mm	PK	Cat. No.
51	3	7.5	75 to 90	1	9.251 391
70	3	7.5	110 to 125	1	9.251 392
70	7	10.0	110 to 125	1	9.251 393
100	7	10.0	150 to 185	1	9.251 394
140	10	16.0	240 to 270	1	9.251 395
196	20	26.0	320 to 385	1	9.251 396



### 4 Funnels, 18/10 stainless steel

**NEW!**

With filling vent and handle.

RSG

Funnel dia. mm	Tube dia. mm	Height mm	PK	Cat. No.
50*	8.0	90	1	6.231 805
80*	12.0	115	1	9.251 208
100	12.0	125	1	9.251 210
120	13.0	145	1	9.251 212
150	17.0	190	1	9.251 215
200	18.0	220	1	9.251 220
250	18.0	260	1	9.251 225

\* Funnels dia. 50mm and 80mm without handle

### 1 LLG-Funnels, PP



- clear, virgin polypropylene.
- polypropylene funnels are autoclavable at 121°C and 1.1 bar for 30 minutes.
- external ribs prevent airlock and back pressure.

Funnel dia. mm	Shaft dia. mm	Stem length mm	PK	Cat. No.
40	6.0	40	10	9.251 185
60	8.0	60	10	9.251 186
80	8.0	80	10	9.251 187
100	10.0	100	10	9.251 188
120	16.0	120	10	9.251 189
150	16.0	150	10	9.251 190



### 2 LLG-Funnels with internal rib, PP



- clear, virgin polypropylene.
- polypropylene funnels are autoclavable at 121°C and 1.1 bar for 30 minutes.
- external ribs prevent airlock and back pressure.
- with internal helicoidal rib which prevents filter papers from sticking and increases filtration speed.

Funnel dia. mm	Shaft dia. mm	Stem length mm	PK	Cat. No.
40	6.0	40	10	9.251 191
60	8.0	60	10	9.251 192
80	8.0	80	10	9.251 193
80	9.0	150	10	9.251 197
100	10.0	100	10	9.251 194
120	16.0	120	10	9.251 195
150	16.0	150	10	9.251 196



### 3 Funnels, PP

With smooth interior surface. Food-Safe.

VITLAB

Funnel dia. mm	Shaft dia. mm	Length* mm	Height mm	PK	Cat. No.
30	1.5	25	45	1	9.251 602
30	4.0	25	47	1	9.251 605
40	4.0	35	65	1	9.251 610
50	7.0	43	85	1	9.251 615
75	6.0	55	110	1	9.251 620
100	8.0	77	155	1	9.251 625
120	11.0	90	180	1	9.251 630
150	15.0	95	220	1	9.251 635

\* Stem length (mm)



### 4 Barrel funnels, PP/PE-HD

Industrial quality, translucent PP. The 400mm and 430mm diameter funnels are made of PE-HD. Stainless steel/aluminium mesh sieve/filters are available for 200mm and 250mm funnels (please order separately art. no.: 9.251 665).

Funnel dia. mm	Stem dia. mm	Length* mm	Height mm	Material	PK	Cat. No.
200	22	90	200	PP	1	9.251 640
250	30	100	260	PP	1	9.251 645
350	35	170	440	PP	1	9.251 650
400	42	150	365	PE-HD	1	9.251 655
430	37	420	420	PE-HD	1	9.251 660

\* Stem length (mm)



## Vessels/Funnels



### 1 Sieve filter for barrel funnels

For 9.251 640 and 9.251 645.

Type	Dia. mm	PK	Cat. No.
Sieve filter	50	1	9.251 665



### 2 Solid addition funnels with NS cone

Made of Duran® tubing. 60° angle. With stopper and cone.

NS	Dia. mm	PK	Cat. No.
14 / 23	45	1	9.251 340
19 / 26	55	1	9.251 341
24 / 29	70	1	9.251 342
29 / 32	80	1	9.251 343



### 3 Powder funnels, PP

Transparent. With short broad stem. Food-Safe.

Funnel dia. mm	Height mm	Stem dia. mm	PK	Cat. No.
65	68	15	1	9.251 720
80	76	21	1	9.251 725
100	94	22	1	9.251 730
120	110	26	1	9.251 735
150	138	28	1	9.251 740
180	160	43	1	9.251 741



### 4 Powder funnels, soda-lime glass

**NEW!**

With short stem.

Dia. mm	NS	Stem dia. mm	PK	Cat. No.
65	14/23	13	1	4.008 433
80	19/26	17	1	4.008 434
100	24/29	22	1	4.008 435
120	29/32	26	1	4.008 436



### 5 Powder funnels, soda-lime glass

Hydrolytical class 3. With short stem.

Dia. mm	Height mm	Stem dia. mm	PK	Cat. No.
55	60	20	1	9.251 307
70	70	22	1	9.251 311
80	80	24	1	9.251 316
100	100	26	1	9.251 319

### 1 Powder funnels DURAN®

With short stem.

Dia. mm	Height mm	Stem dia. mm	PK	Cat. No.
120	105	35	1	9.251 323
160	140	35	1	9.251 332
200	170	40	1	9.251 338



### 2 Half-round conical joint funnels, PP

Transparent. With half-round funnel body. The stem taper corresponds with standard conical joints. Ideal for pouring liquid or powdered reagents in multi-neck flasks. Food-Safe.

Funnel dia. mm	Height NS mm	PK	Cat. No.
40	75 14 / 23	1	9.251 814
50	95 19 / 26	1	9.251 819
75	135 29 / 32	1	9.251 829



### 3 Funnel stands LaboPlast®, PP

White PP, reinforced glass-fibre. For 2 or 4 funnels. Corrosion resistant. Robust, heavy base provides good stability. Funnel holders are fully height-adjustable. With aperture reduction insert for small funnels.

To hold funnels piece	Width mm	Length mm	Height mm	PK	Cat. No.
2	140	300	480	1	9.069 922
4	150	550	500	1	9.069 924



### 4 Funnel holders, PP

Polypropylene. Single or double holder for funnels from 25mm (with adapter supplied) up to 170mm diameter. Without adapter they can be used for powder funnels with stem diameters not exceeding 35mm. Two clamp adapters are provided for use with rods from 8mm to 14mm.

Kartell

To hold funnels piece	PK	Cat. No.
1	1	9.251 561
2	1	9.251 560



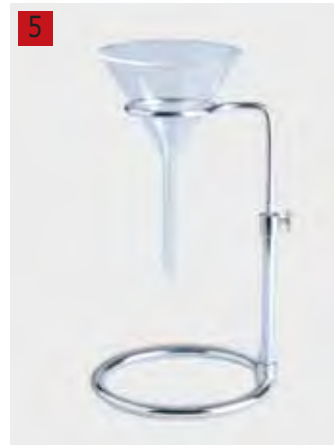
### 5 Funnel holders, stainless steel

Adjustable height 140 to 240 mm.

**NEW!**

Isolab

Description	PK	Cat. No.
Funnel holders	1	4.008 510





### 1 LLG-Funnel holders, stainless steel, with or without boss head

These funnel holders are suitable to hold all types of funnels with a diameter up to 150mm. They can also accommodate separating funnels (up to 1000ml). With or without boss head.

Dia. mm	Description	PK	Cat. No.
40	without boss head	1	9.251 550
60	without boss head	1	9.251 551
80	without boss head	1	9.251 552
100	without boss head	1	9.251 553
60	with boss head	1	9.251 555
80	with boss head	1	9.251 556
100	with boss head	1	9.251 557



### 2 LLG-Funnel holder, PP NEW!

Manufactured from best quality polypropylene. Suitable to hold all types of laboratory funnels with diameters up to 150mm. Two tapered wedges are provided to ensure firm grip on funnels having diameters of 10-13mm.

Description	PK	Cat. No.
Funnel holder	1	9.251 558



### 3 Multi-purpose cylinders, DURAN®

DURAN®. With base. Rim flanged and surface-ground. Autoclavable.

*DURAN Group*

Capacity ml	Dia. mm	Height mm	PK	Cat. No.
130	40	100	1	9.318 107
250	40	200	1	9.318 134
500	40	400	1	9.318 168
570	60	200	1	9.318 136
700	60	250	1	9.318 146



### 4 Multi-purpose cylinders, DURAN®

DURAN®. With base. Rim roughly ground. Autoclavable.

*DURAN Group*

Capacity ml	Dia. mm	Height mm	PK	Cat. No.
250	40	200	1	9.318 034
300	50	150	1	9.318 021
380	40	300	1	9.318 052
500	40	400	1	9.318 068
570	60	200	1	9.318 036
600	50	300	1	9.318 053
700	60	250	1	9.318 046
1000	50	500	1	9.318 080
1500	65	450	1	9.318 077
2000	80	400	1	9.318 074



### 5 Pneumatic trough, glass

Cylindrical. Heavy glass.

Dia. mm	Height mm	PK	Cat. No.
250	125	1	9.172 305

### 1 Gas jar covers, glass

For gas jars. Clear glass.

For dia. mm	PK	Cat. No.
50	1	9.318 407
60	1	9.318 408
70	1	9.318 409
90	1	9.318 411



### 2 Glass cylinders with knob lid, DURAN®

DURAN®. With knob lid and polished rim.

*DURAN Group*

Dia. mm	Height mm	PK	Cat. No.
80	80	1	9.318 201
100	100	1	9.318 203
120	120	1	9.318 205
150	150	1	9.318 210
210	210	1	9.318 221
260	260	1	9.318 232



### 3 Evaporating basins, DURAN®

DURAN®, DIN 12336. Flat-bottom with spout. Autoclavable.

*DURAN Group*

Capacity ml	Rim dia. mm	Height mm	PK	Cat. No.
15	50	25	1	9.000 032
45	60	30	1	9.000 034
60	70	35	1	9.000 038
90	80	45	1	9.000 041
170	95	55	1	9.000 044
320	115	65	1	9.000 049
600	140	80	1	9.000 054
1500	190	100	1	9.000 059



### 4 Evaporating basins, Quartz glass

Transparent silica (Quartz glass). In accordance with DIN 12336. Flat-bottom with spout.

*proQuarz GmbH*

Capacity ml	Rim dia. mm	Height mm	PK	Cat. No.
10	40	18	1	9.000 110
15	50	25	1	9.000 111
45	60	30	1	9.000 112
60	70	35	1	9.000 113
90	80	45	1	9.000 114
170	95	55	1	9.000 115
320	115	65	1	9.000 116



### 5 Crystallising dishes, DURAN®

DURAN®, To DIN 12338. With spout. Dishes with capacity of 100ml and above have labelling patch. Glass Type I/neutral glass as per USP, EP and JP. Autoclavable.

*DURAN Group*

Capacity ml	Dia. mm	Height mm	PK	Cat. No.
20	40	25	1	9.144 024
40	50	30	1	9.144 032
60	60	35	1	9.144 034
100	70	40	1	9.144 038
150	80	45	1	9.144 041
300	95	55	1	9.144 044
500	115	65	1	9.144 049
900	140	75	1	9.144 054
2000	190	90	1	9.144 059
3500	230	100	1	9.144 063



## Vessels/Dishes, Basins



### 1 Evaporating basins, porcelain, flat form

Glazed inside and outside except for rim.

Haldenwanger

Capacity ml	Rim dia. mm	Height mm	PK	Cat. No.
8*	40	9	1	9.000 204
10*	50	11	1	9.000 205
20*	63	13	1	9.000 206
40*	80	20	1	9.000 208
80*	100	22	1	9.000 210
270*	125	25	1	9.000 212
450	160	35	1	9.000 216
1100	190	55	1	9.000 220
1750	240	65	1	9.000 225
2500	300	60	1	9.000 230

\*According to DIN standard



### 2 LLG evaporating dish, porcelain, semideep

**NEW!**

Capacity ml	Dia. mm	Height mm	PK	Cat. No.
41	72	26	1	9.000 150
62	83	27	1	9.000 151
110	96	30	1	9.000 152
240	127	42	1	9.000 153
420	154	50	1	6.232 525
558	170	55	1	9.000 154



### 3 Evaporating basins, porcelain, shallow form

Round bottom with spout. DIN 12903. 10 to 310ml sizes are completely glazed inside and out. 640 to 3400ml sizes are glazed with the exception of the outer base.

Haldenwanger

Capacity ml	Rim dia. mm	Height mm	PK	Cat. No.
10	40	16	1	9.000 304
25	50	20	1	9.000 305
35	63	25	1	9.000 306
75	80	32	1	9.000 308
115	100	40	1	9.000 310
250	115	50	1	9.000 312
580	160	64	1	9.000 316
1000	200	80	1	9.000 320
2200	250	86	1	9.000 325
3400	310	110	1	9.000 330



### 4 Evaporating basins, 18/10 steel

18/10 steel. Cylindrical.

Bochem

Description	Capacity ml	Dia. mm	Height mm	PK	Cat. No.
Tall	125	75	35	1	9.000 460
Tall	250	85	50	1	9.000 461
Tall	500	110	55	1	9.000 462
Shallow	50	60	20	1	9.000 470
Shallow	75	70	20	1	9.000 471
Shallow	100	80	20	1	9.000 472



### 5 Casseroles, porcelain

To DIN 12907. Glazed inside and outside except for rim.

Haldenwanger

Capacity ml	Dia. mm	Height mm	PK	Cat. No.
80	63	35	1	9.140 113
140	80	45	1	9.140 114
290	100	65	1	9.140 115
500	125	70	1	9.140 116
1300	160	97	1	9.140 118
2600	215	112	1	9.140 119

Capacity brimful. Dimensions may vary by up to 4%.

### 1 Museum jars, DURAN®

DURAN®. Cylindrical. With ground-in knob lid.

DURAN Group

Dia. mm	Height mm	PK	Cat. No.
100	100	1	9.173 411
80	120	1	9.173 416
120	120	1	9.173 417
100	150	1	9.173 426
150	150	1	9.173 428
100	200	1	9.173 438
150	200	1	9.173 439
150	250	1	9.173 450
120	300	1	9.173 457



### 2 Display bottles, DURAN®

DURAN®. Cylindrical. With fitted stoppers.

DURAN Group

Capacity ml	Grinding mm	Dia. mm	Height mm	PK	Cat. No.
100	34.5	51	135	1	9.007 108
300	45	69	163	1	9.007 116
600	50	81	214	1	9.007 121
750	60	90	240	1	9.007 122
1200	60	100	253	1	9.007 126



### 3 Basins, 18/10 steel

With flanged rim. Polished finish.

Bochem

Capacity ml	Ext. diam. mm	Height mm	PK	Cat. No.
1000	185	70	1	9.200 518
2000	250	70	1	9.200 524
3000	265	95	1	9.200 526
4500	280	125	1	9.200 529
6000	335	120	1	9.200 533
8000	360	145	1	9.200 536



### 4 Bowls, PP

White. With rim. Highly robust design. Food-Safe.

VITLAB

Capacity L	Ext. diam. mm	Height mm	PK	Cat. No.
1	160	70	1	9.301 216
2	200	80	1	9.301 220
3	240	100	1	9.301 224
4	280	120	1	9.301 228
7	320	130	1	9.301 232
9	360	150	1	9.301 236
13	400	180	1	9.301 240



### 5 Instrument trays, melamine resin

White, melamine resin. Autoclavable (121°C)

Width mm	Length mm	Height mm	PK	Cat. No.
190	150	20	1	7.608 352
240	180	20	1	9.200 324
270	210	20	1	9.200 327
300	150	20	1	9.200 328
300	190	20	1	7.055 383
360	240	20	1	9.200 335
430	290	20	1	9.200 345
430	290	20	1	7.603 295

7.603 295 with handle bar





## Vessels/Dishes, Basins



### 1 Instrument boxes, melamine resin

Melamine resin. Base section is autoclavable (121°C).

**Please order lid separately.**

Width mm	Length mm	Height mm	PK	Cat. No.
110	210	30	1	9.200 177
150	190	40	1	9.200 170
160	290	30	1	9.200 165
160	290	60	1	9.200 160
240	350	40	1	9.200 155
250	350	100	1	9.200 150



### 2 Lids, PS for instrument boxes

For	PK	Cat. No.
9.200 177	1	9.200 181
9.200 170	1	9.200 182
9.200 165 und 9.200 160	1	9.200 183
9.200 155 und 9.200 150	1	9.200 184



### 3 Instrument boxes, 18/10 steel

RSG

Width mm	Length mm	Height mm	PK	Cat. No.
110	170	20	1	9.150 722
120	200	20	1	9.150 723
140	220	28	1	9.150 724
180	240	30	1	9.150 726
180	260	30	1	9.150 727
180	280	30	1	9.150 728
210	310	40	1	9.150 729
250	350	40	1	9.150 730
280	420	50	1	9.150 732
340	520	50	1	9.150 733



### 4 Instrument boxes, glass

Glass. With vertical walls and polished rims.

With or without stainless steel lid. Dimensions stated are nominal.

Lid	Width mm	Length mm	Height mm	PK	Cat. No.
without	60	120	40	1	9.200 014
without	90	170	45	1	9.200 017
without	100	200	50	1	9.200 020
without	100	200	100	1	9.200 037
without	150	220	55	1	9.200 022
without	150	275	60	1	9.200 028
without	220	350	70	1	9.200 035
with	60	120	40	1	9.200 114
with	90	170	45	1	9.200 117
with	100	200	50	1	9.200 120
with	100	200	100	1	9.200 137
with	150	220	55	1	9.200 122
with	150	280	60	1	9.200 128
with	220	350	70	1	9.200 135



### 5 Metal boxes, stainless steel 18/10

Stainless steel 18/10. Satin finish. With knob lid.

Width mm	Length mm	Height mm	PK	Cat. No.
80	120	40	1	9.200 412
100	160	30	1	9.200 416
100	200	50	1	9.200 420
150	260	50	1	9.200 426
200	300	50	1	9.200 430
180	280	60	1	9.200 428
200	400	80	1	9.200 440
300	500	100	1	9.200 450

### 1 Laboratory trays LaboPlast®, PP

White multi-purpose trays. Injection-moulded. Durable and resist flexing, with strong, rounded rim. Stackable and hygienic. Polished surface is easy to clean. Resistant to many acids and alkaline solutions. Food Safe.

Bürkle



Internal dimensions mm	Width mm	Length mm	Height mm	PK	Cat. No.
130 x 180	230	180	42	1	9.200 203
180 x 240	310	250	65	1	9.200 204
240 x 300	370	310	75	1	9.200 205
300 x 400	520	420	120	1	9.200 206
400 x 500	634	534	140	1	9.200 207
500 x 700	846	648	160	1	9.200 208

### Laboratory tray sets LaboPlast®, PP

**NEW!**

Bürkle

Description	PK	Cat. No.
Set small with tray base of 130 x 180; 180 x 240; 240 x 300 and 300 x 400mm	1	6.089 602
Set large with tray base of 130 x 180; 180 x 240; 240 x 300; 300 x 400; 400 x 500 and 500 x 700mm	1	9.200 210

### 2 Photographic trays LaboPlast®, PVC, with or without grooves

White, with or without grooves in the base. Temperature resistant up to +70°C. Trays in red or black available on request.

Base	Type	Width mm	Length mm	Height mm	PK	Cat. No.
140 x 190	with grooves	230	180	40	1	9.200 220
190 x 260	with grooves	320	240	50	1	9.200 225
260 x 320	with grooves	370	320	50	1	9.200 232
310 x 410	with grooves	530	430	105	1	9.200 243
420 x 510	with grooves	610	520	110	1	9.200 252
510 x 610	with grooves	730	630	110	1	9.200 267
110 x 160	without grooves	200	150	30	1	9.200 269
140 x 190	without grooves	230	180	40	1	9.200 270
190 x 260	without grooves	320	240	50	1	9.200 275
260 x 320	without grooves	370	320	50	1	9.200 282
310 x 410	without grooves	530	430	105	1	9.200 283
420 x 510	without grooves	610	520	110	1	9.200 292
510 x 610	without grooves	730	630	110	1	9.200 297



### 3 Photographic trays, PVC

PVC. With ribbed base.

Kartell

Width mm	Length mm	Height mm	PK	Cat. No.
150	200	45	1	9.200 372
200	250	60	1	9.200 373
260	320	70	1	9.200 374
300	350	80	1	9.200 375
330	430	90	1	9.200 376
420	520	90	1	9.200 377
530	675	100	1	9.200 378
420	540	180	1	9.200 379



### 4 Photographic trays, 18/10 steel

18/10 steel. With rounded edges.

Mühlacker

Width mm	Length mm	Height mm	PK	Cat. No.
140	190	50	1	9.200 700
180	250	60	1	9.200 701
190	260	50	1	9.200 702
260	320	60	1	9.200 703
240	350	70	1	9.200 704
270	400	80	1	9.200 705
330	500	100	1	9.200 706



### 5 Tidy trays, PVC

PVC. With compartments. For use as drawer trays or bench tidy trays.

Kartell

Compartment no.	Width mm	Length mm	Height mm	PK	Cat. No.
5	304	404	64	1	9.200 370
12	303	403	63	1	9.200 380



## Vessels/Dishes, Basins


**1**

### 1 Pipette tray, PVC

PVC. For pipettes of all sizes. Can accommodate 7 pipettes with overall stem diameter not exceeding 20mm longitudinally or 16 pipettes with stem diameter not exceeding 10mm laterally.

*Kartell*

Width mm	Length mm	Height mm	PK	Cat. No.
220	280	39	1	9.200 392


**2**

### 2 Pipette tray, PVC

PVC. Tidy tray. With 4 long compartments for approx. 30 graduated pipettes (1ml to 20ml).

*Kartell*

Width mm	Length mm	Height mm	PK	Cat. No.
300	420	30	1	9.200 394


**3**

### 3 Watch glasses, Soda-lime glass

Hydrolytical class 3. To DIN 12341. Ground edges. Ground polished.

Dia. mm	PK	Cat. No.
40	1	9.263 004
50	1	9.263 005
60	1	9.263 006
70	1	9.263 007
80	1	9.263 008
90	1	9.263 009
100	1	9.263 010
110	1	9.263 011
120	1	9.263 013
125	1	9.263 012
150	1	9.263 015
200	1	9.263 020
250	1	9.263 025


**4**

### 4 Watch glasses, Borosilicate glass 3.3

DIN 12341. Flame-polished edges. Autoclavable.

Dia. mm	PK	Cat. No.
50	10	9.263 470
60	10	9.263 471
70	10	9.263 472
80	10	9.263 473
100	10	9.263 474
125	10	9.263 475
150	10	9.263 476
200	10	9.263 477


**5**

### 5 Watch glasses, DURAN®

DURAN®. DIN 12341. Flame-polished edges. Autoclavable.

*DURAN Group*

Dia. mm	PK	Cat. No.
40	1	9.263 424
50	1	9.263 432
60	1	9.263 434
80	1	9.263 441
100	1	9.263 446
125	1	9.263 452
150	1	9.263 457
200	1	9.263 461
250	1	9.263 466


**6**

### 6 Watch glasses, PP

With base. Resistant to steam sterilisation (121°C).

*Kartell*

Dia. mm	PK	Cat. No.
60	1	9.263 526
80	1	9.263 528
100	1	9.263 530
125	1	9.263 532

### 1 LLG-Crucibles, porcelain, low/medium/tall, DIN 12904

To DIN 12904. Glazed.

Capacity	Ext. diam.	Height	Form	PK	Cat. No.
ml	mm	mm			
5	30	19	Low form	1	9.250 900
10	35	22	Low form	1	9.250 901
17	40	25	Low form	1	9.250 902
21	45	28	Low form	1	9.250 903
34	50	32	Low form	1	9.250 904
63	60	38	Low form	1	9.250 905
91	70	44	Low form	1	9.250 906
12	35	28	Medium form	1	9.250 910
20	40	32	Medium form	1	9.250 911
30	45	36	Medium form	1	9.250 912
45	50	40	Medium form	1	9.250 913
80	60	48	Medium form	1	9.250 914
120	70	56	Medium form	1	9.250 915
15	30	38	Tall form	1	9.250 920
26	35	44	Tall form	1	9.250 921
35	40	50	Tall form	1	9.250 922
50	45	56	Tall form	1	9.250 923
72	50	62	Tall form	1	9.250 924
130	60	75	Tall form	1	9.250 925



### 2 LLG-Porcelain Lid for crucible, DIN 12904

**NEW!**

Lid diameter	Crucible diameter	PK	Cat. No.
mm	mm		
34	30	1	9.250 930
39	35	1	9.250 931
44	40	1	9.250 932
49	45	1	9.250 933
54	50	1	9.250 934
64	60	1	9.250 935
74	70	1	9.250 936



### 3 Crucibles, porcelain, low form

To DIN 12904. Glazed. Without lid.

Haldenwanger

Capacity	Ext. diam.	Height	PK	Cat. No.
ml	mm	mm		
8	30	19	1	9.250 030
11	35	22	1	9.250 035
20	40	25	1	9.250 040
25	45	28	1	9.250 045
40*	50	32	1	9.250 050
65	60	38	1	9.250 060
95	70	47	1	9.250 070

\* Conradson crucible in accordance with ASTM D 189-65



### 4 Crucibles, porcelain, medium form

To DIN 12904. Glazed. Without lid.

Haldenwanger

Capacity	Ext. diam.	Height	PK	Cat. No.
ml	mm	mm		
10*	30	25	1	9.250 130
13	35	28	1	9.250 135
20	40	32	1	9.250 140
38	45	36	1	9.250 145
49	50	40	1	9.250 150
90	60	50	1	9.250 160
150	70	60	1	9.250 170
230*	82	65	1	9.250 180

\* Not to DIN.



## Vessels/Crucibles



### 1 Crucibles, porcelain, tall form

To DIN 12904. Glazed. Without lid.

Haldenwanger

Capacity ml	Top dia. mm	Height mm	PK	Cat. No.
11	26	33	1	9.250 225
15	30	38	1	9.250 230
24	35	44	1	9.250 235
40	40	50	1	9.250 240
50	46	58	1	9.250 245
85	50	65	1	9.250 250
140	60	79	1	9.250 260



### 2 Lids for porcelain crucibles

Haldenwanger

Top dia. mm	PK	Cat. No.
26	1	6.005 993
30	1	9.250 306
35	1	9.250 308
40	1	9.250 310
45	1	9.250 313
50	1	9.250 314
60	1	9.250 316
70	1	9.250 319
80	1	9.250 327



### 3 Crucibles, Al<sub>2</sub>O<sub>3</sub>, wide form

Conical. For use up to approx. 1700°C.  
Al<sub>2</sub>O<sub>3</sub> content 99.7%.

Haldenwanger

Capacity ml	Top dia. mm	Bottom dia. mm	Height mm	PK	Cat. No.
10	30	14	24	1	9.250 389
25	41	18	37	1	9.250 390
40	48	20	41	1	9.250 391
60	54	24	50	1	9.250 392
80	60	26	50	1	9.250 393
100	66	30	56	1	9.250 394



### 4 Crucibles, Al<sub>2</sub>O<sub>3</sub>, tall form

Conical. Max. 1700°C.  
Al<sub>2</sub>O<sub>3</sub> 99.7%.

Haldenwanger

Capacity ml	Top dia. mm	Bottom dia. mm	Height mm	PK	Cat. No.
10	25	15	30	1	9.250 399
15	30	18	38	1	9.250 400
20	33	18	40	1	9.250 401
30	38	21	47	1	9.250 402
45	42	25	54	1	9.250 403
80	50	27	65	1	9.250 404
150	62	32	75	1	9.250 405
250	73	35	90	1	9.250 406
350	85	35	100	1	9.250 407



### 5 Lids for al<sub>2</sub>o<sub>3</sub> crucibles

**NEW!**

Haldenwanger

Top dia. mm	PK	Cat. No.
25	1	6.241 895
30	1	6.801 239
35	1	7.602 538
40	1	6.304 147
45	1	6.900 118
50	1	6.236 618
63	1	7.620 719
70	1	6.231 115

### 1 Crucibles, quartz glass, medium form

Transparent silica (Quartz glass). Medium form.

proQuarz GmbH

Capacity ml	Ext. diam. mm	Height mm	PK	Cat. No.
20	40	32	1	9.250 340
49	50	40	1	9.250 350
90	60	48	1	9.250 351



### 2 LLG-Incinerating dishes, porcelain, DIN 12903

Porcelain, flat form with spout. To DIN 12903.

**NEW!**

Capacity ml	Ext. diam. mm	Height mm	PK	Cat. No.
20	50	10	1	9.115 301
20	60	14	1	9.115 302
55	80	20	1	9.115 303
110	100	25	1	6.231 540
250	130	30	1	9.115 304



### 3 Incinerating dishes, porcelain, flat form

Without spout. Glazed except for base exterior.

Haldenwanger

Capacity ml	Ext. diam. mm	Height mm	PK	Cat. No.
8	37	10	1	9.115 036
10	42	11	1	9.115 041
15	47	12	1	9.115 045



### 4 Combustion dishes, porcelain, cylindrical form

Deep. Without spout. Glazed, except for base exterior.

Haldenwanger

Capacity ml	Ext. diam. mm	Height mm	PK	Cat. No.
15	40	20	1	9.115 140
30	50	25	1	9.115 150
60	60	30	1	9.115 160



### 5 Combustion dishes, porcelain, rectangular

With vertical side walls. Glazed, except for base exterior.

Haldenwanger

Capacity ml	Length mm	Depth mm	Height mm	PK	Cat. No.
10	48	25	10	1	9.115 245
20	70	45	12	1	9.115 265
55	95	55	15	1	9.115 295



### 6 Combustion boats, porcelain, with loop handle

Glazed porcelain.

Haldenwanger

Length mm	Width mm	Height mm	PK	Cat. No.
85	13	8	1	9.201 590
102	13	10	1	9.201 596



### 7 Magnesia trays

Width mm	Length mm	PK	Cat. No.
9	100	100	9.152 109

